

Installation Instructions for Relay board kit #305298

INSTRUCTIONS

This Relay board kit is instruction only for Processores where the existing relay pcb part no #305219 is exchanged to relay pcb part no #305297. Please confirm the part numbers on the pcb (the first 6 numbers on the silver lable)

The kit contents of the following parts Further please see Fig 1:

Part	Decription	Unit	Numbers.
8489	Terminal 4x2,5mm2 CAGE-C vert	ST	10
8490	Term.4x2,5mm2 yel/gr CAGE ver	ST	3
8491	Endpiece Term.4x2,5mm2 vert	ST	1
8492	Label 1-12 for 8489/90 term.	ST	1
8493	Jumper isol. 2P for 8490/8489	ST	2
9316	Wire 1x1.5mm2 Brown Heatres.	CM	37
9318	Wire 1x1.5mm2 Blue Heatres.	CM	37
82041	Edge Protection Profile	CM	55
88023	Screw Mg 4x10 A4 Din 7985	ST	9
88152	Nut M4 A4 Din 934	ST	7
88201	Spring Washer 4MM A4 Din 127B	ST	7
88212	Flatwasher 4.3x9x08MM A4 125A	ST	7
88245	Lock Disc 4,3 MM A4 Din 6798	ST	2
305297	Relay PCB, Celis SSR MK 4	ST	1
305542	Adapter plate f.el-box	ST	1
890698	Relay 3x shft 16A 24VDC RCnet	ST	2
890727	Cable relays/C-box 7x1,5mm2	ST	1
890728	Ground Wire 10cm/1Eye SU	ST	2

Installation

1. Turn the processor off and remove the wall plug. It is important to remove the wall plug, as the main switch on the processor does not cut the power to the exhaust blower.
2. Remove the two screws on the front of the interface box. See fig 2. the electronic will appear as on fig 3.
3. Remove the old relay pcb and the old relays. Do not cut any cables!
4. Mount the Edge Protection Profile as on fig 4.
5. Mount the new relay pcb #305297
6. Mount the adapter plate with the 2 new relays and the 13 pol terminal plug. See fig 5.
7. Connect the Ground wire to the interface case.
8. Connects the cables according to the interconn diagrams 6366 for one frame processors (EG750, EG900 or EG1140) or diagram 6367 two frame Processors (EG751, EG901, EG1141).
9. Connect the relay control wire from the upper relay to the plug on the relay pcb marked upper heat. Connect the relay control wire from the lower relay to the plug on the relay pcb marked lower heat. Note that the control wires on the relay is mounted closest to the

- adaper plate. The old wire is used!
10. Select the requeste voltage on the relay pcb 208/230 Volt
 11. Test the installation and close the interface box.

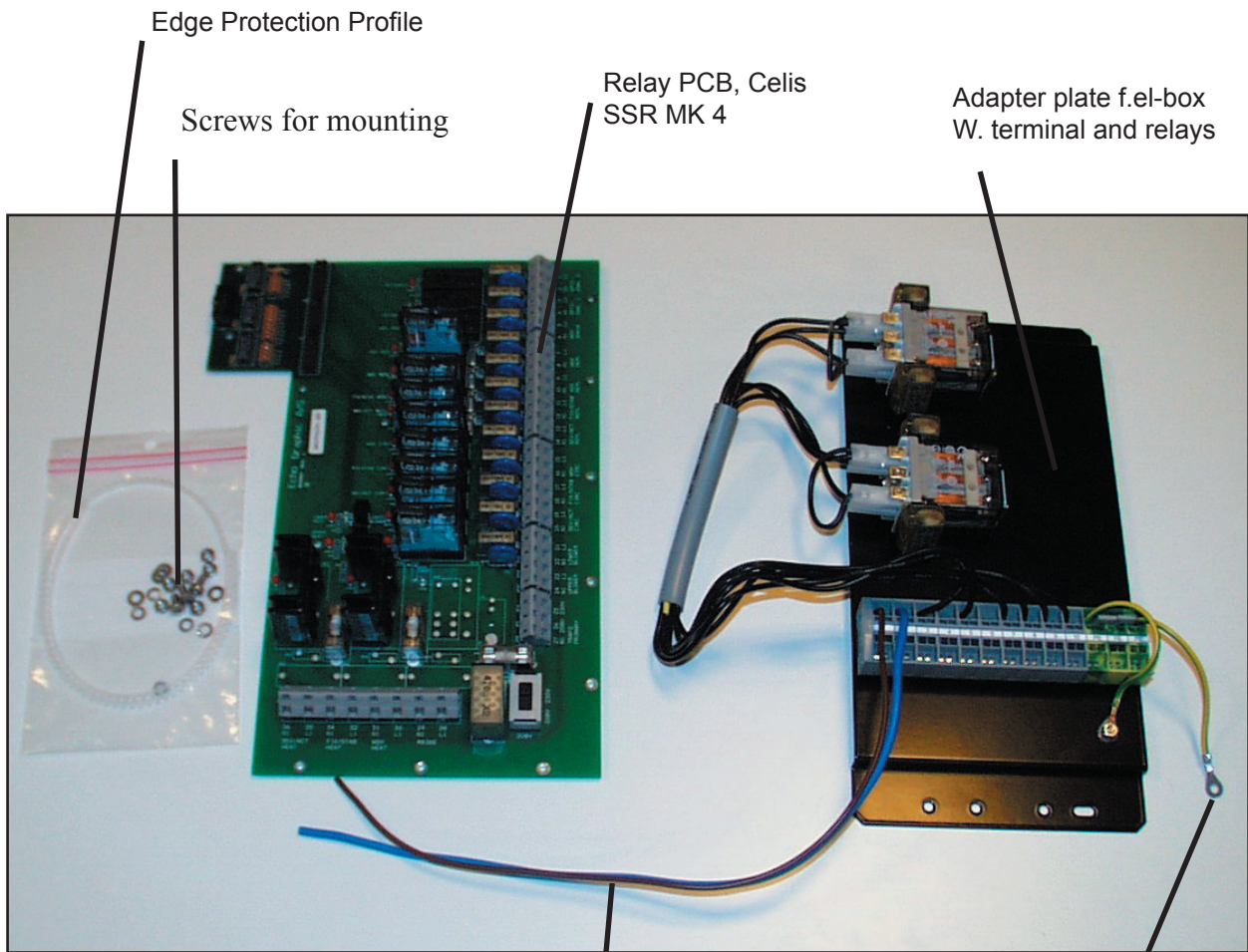


Fig 1

Wire for relay PCB

Ground Wire 10cm/
1Eye SU



Fig. 2. Remove the 2 screws shown.

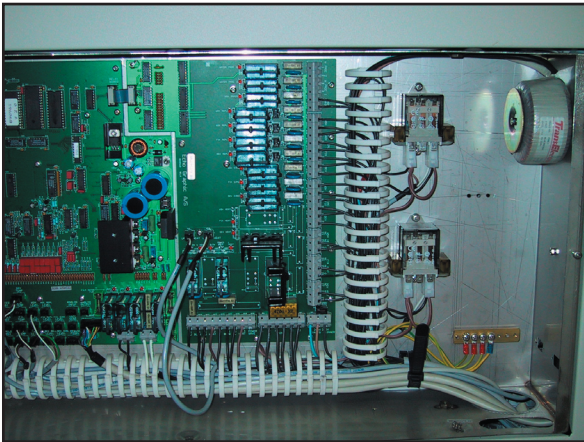


Fig 3. View of the Main and relay board

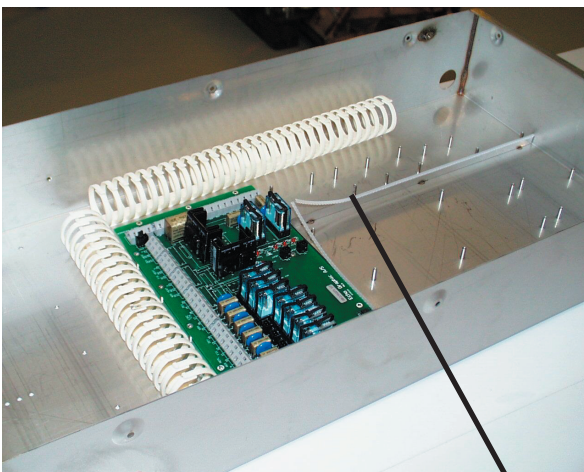


Fig 4. Edge Protection Profile

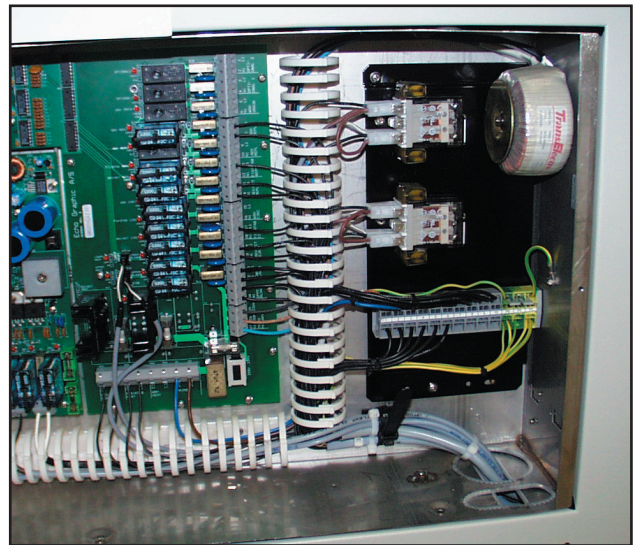
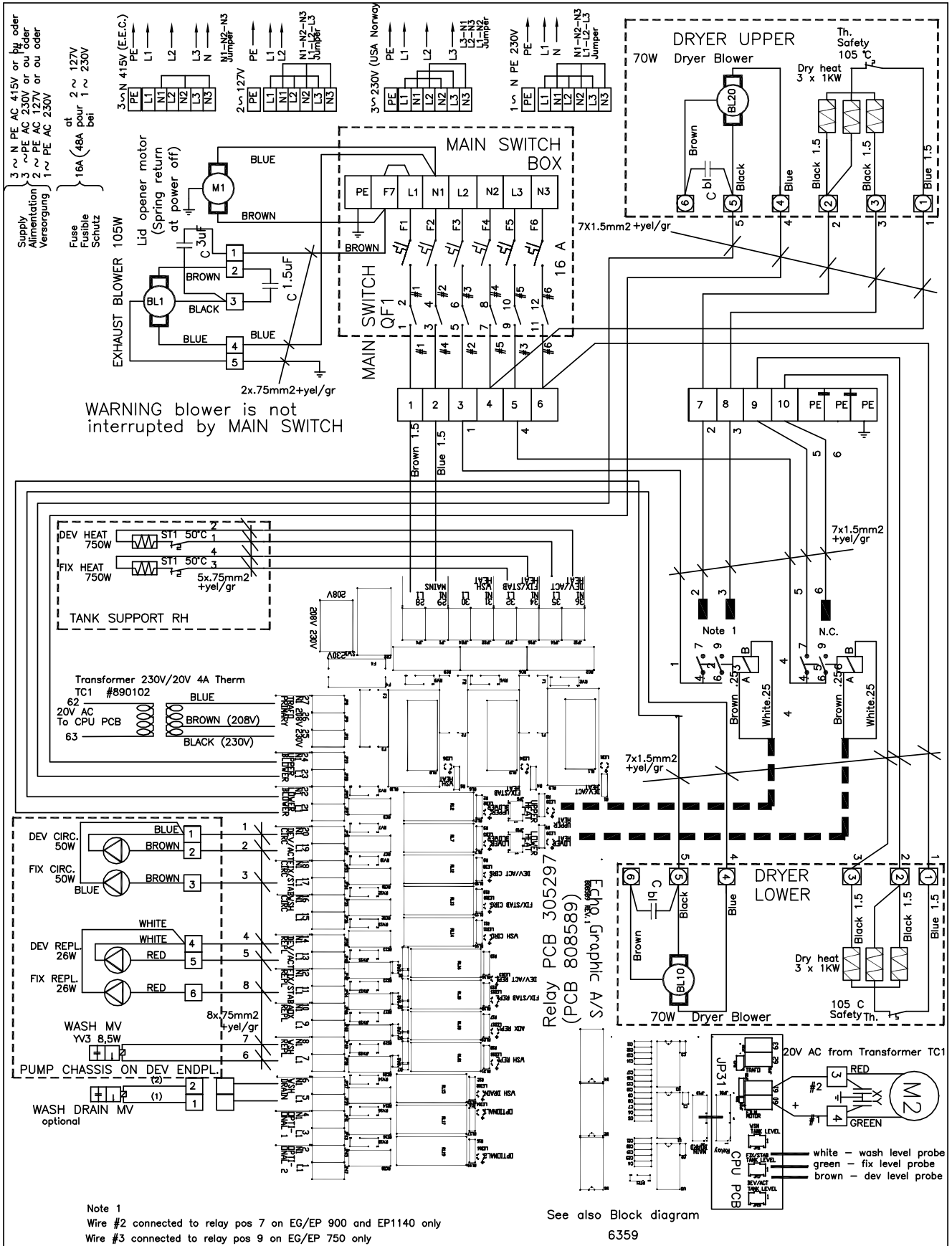


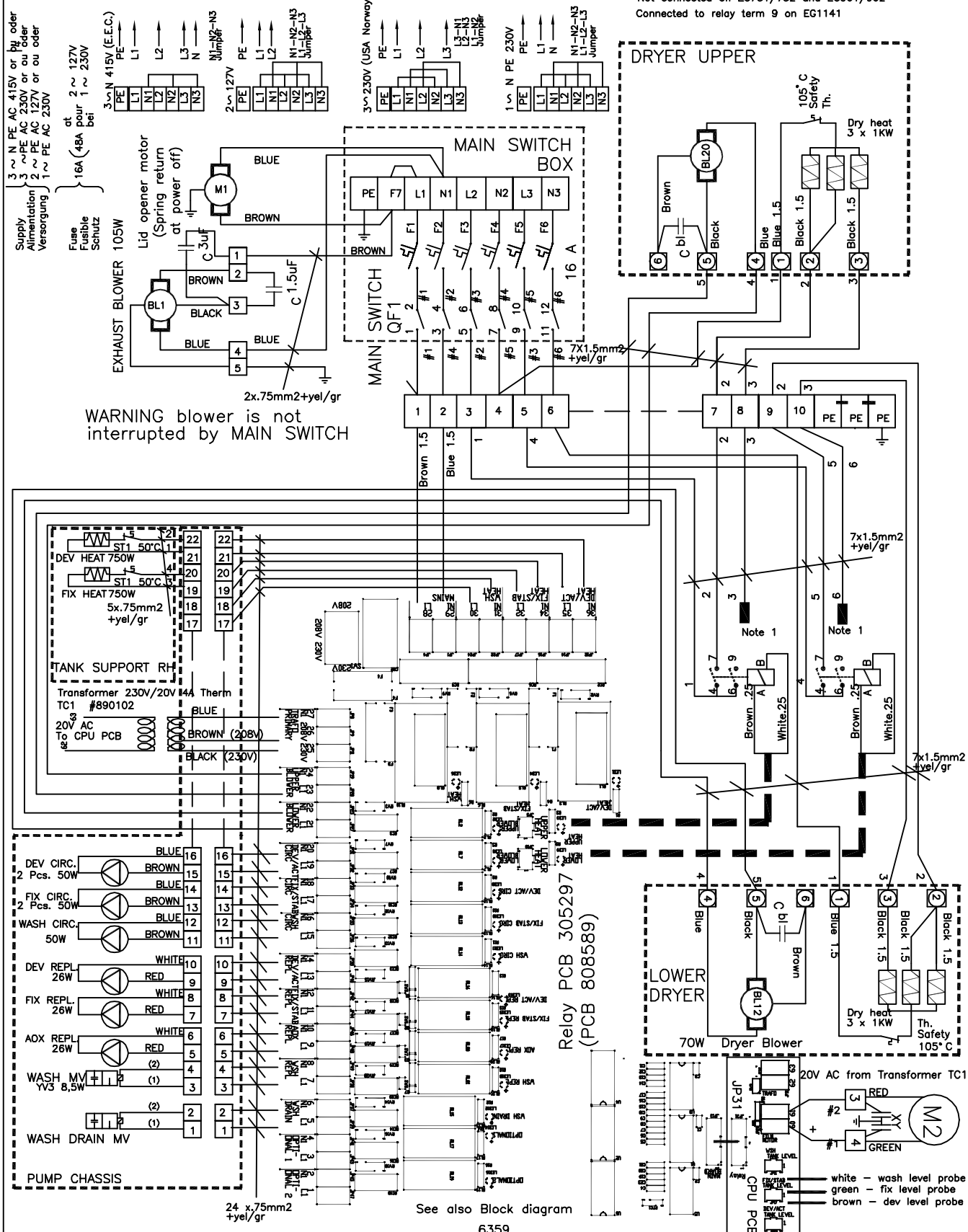
Fig. 5 View of the mounted Relay and Adapter plate

For control of the installation
 F4 on the relay PCB can be removed and the
 voltage on Pin 28-29 can be controlled to 208/
 230 volt.
 Specially important by 3 fase installation!



Echo Graphic A/S Haandvaerkervej 2 DK-9560 Hadsund, Denmark Phone int.: +45 98 57 19 55 Fax int.: +45 98 57 15 91	Design/Draw : CV	Scale : :	Date : 16-08-02
	Name: Interconn. diagram EGxx0 upgrad		Drawing no. : 6366 -

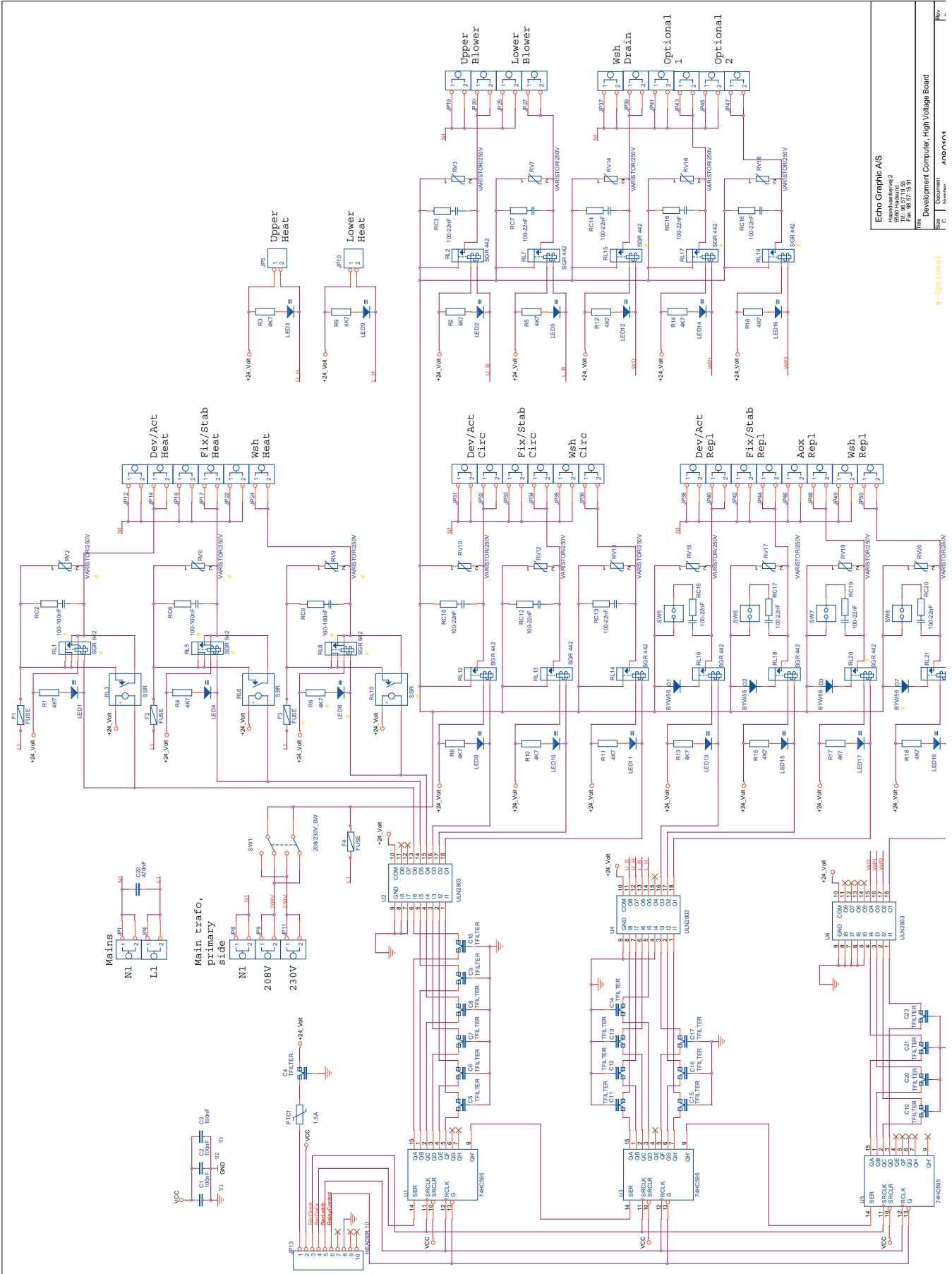
Note 1
 Not connected on EG751/752 and EG901/902
 Connected to relay term 9 on EG1141



Echo Graphic A/S
 Haandvaerkervej 2
 DK-9560 Hadsund, Denmark
 Phone int.: +45 98 57 19 55
 Fax int.: +45 98 57 15 91

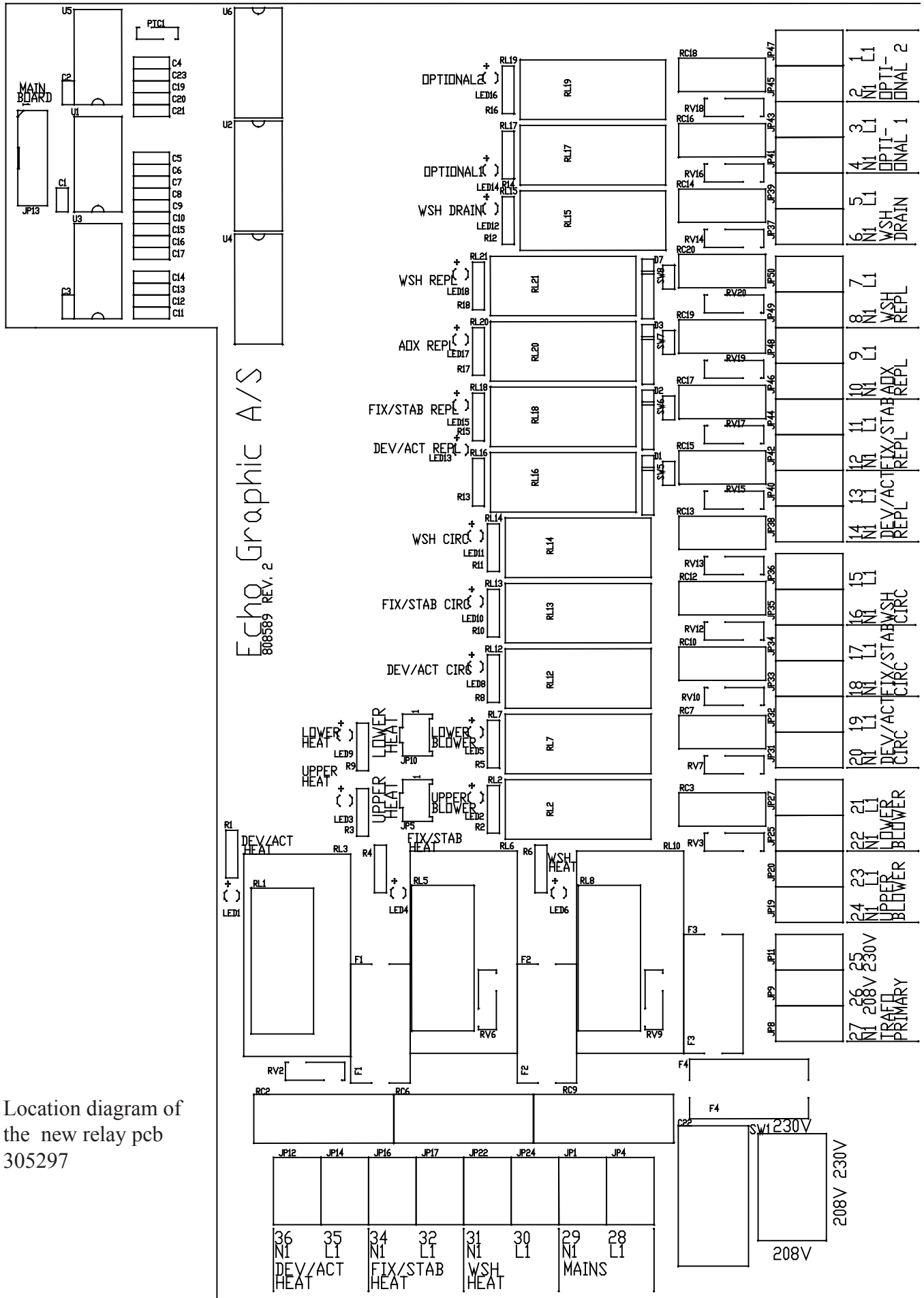
Design/Draw : CV	Scale : :	Date : 10-01-02
Name: Interconn. diagram EG xx1 upgrade	Drawing no. : 6367 -	

Diagram of the new relay pcb 305297



Echo Graphic AS
 Havnemøllevej 2
 Tlf. 86 17 11 55
 Fax 86 17 18 91
 www.EchoGraphic.com
 Development Computer, High Voltage Board

Size | Document | Revision
 #-Optional



Location diagram of the new relay pcb 305297



Partlist of relay pcb 305297

Relay PCB, Celis SSR MK

Revised: 30/10/2002

Item	Quantity	Partno	Partdescription
1	1 ST	45024	Driver 8X Sink ULN2803A
2	2 ST	805021	SSR Relay 16A
3	12 ST	808416	Relay Socket Type1
4	12 ST	808417	Retaining Clip, Plast
5	3 ST	8909	Fuse 5 x 20 6,3A t
6	12 ST	911711	Relay 8A 1X shft

Echo Graphic

Echo Graphic A/S
2, Haandvaerkervej
DK 9560 Hadsund
DENMARK

Phone int.: +45 98 57 19 55
Fax int.: +45 98 57 15 91
e-mail: info@echographic.dk
www.echographic.dk

