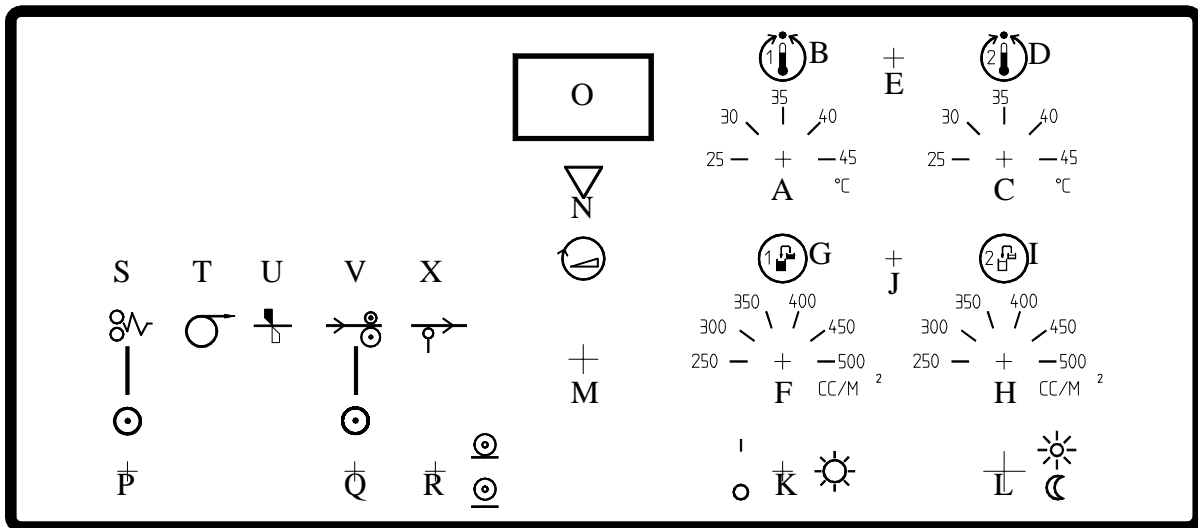


## SECTION EIGHT: On-Line Description Apollo Imagesetter

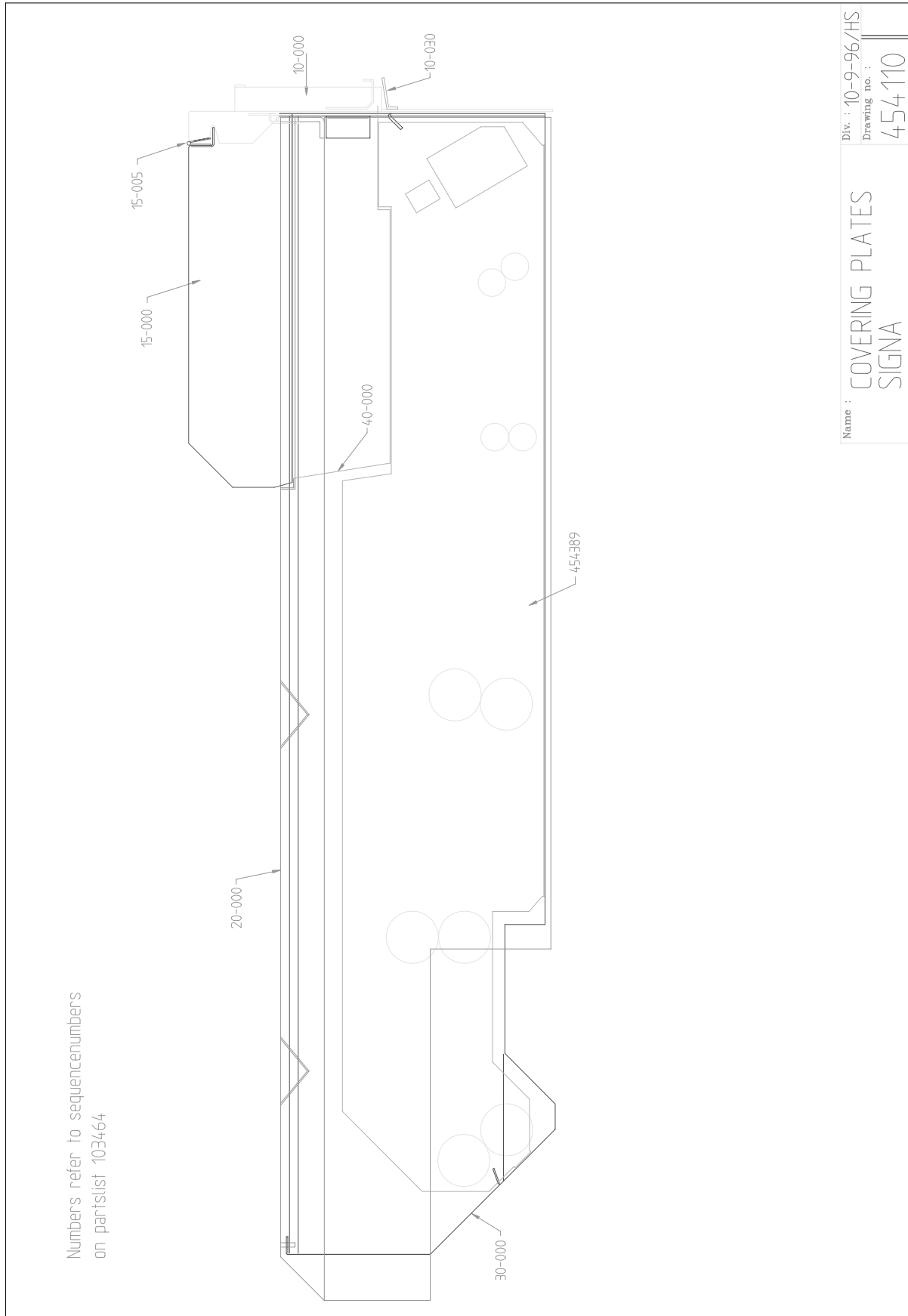
### Important

**Your On-Line Processor has a built in exhaust blower. Even if the main switch is switched off, the blower will still be on. This is to prevent chemical fumes in the conveyor/imagesetter. If a timer is connected in series with the main power cable, the machine has to be modified, so that the exhaust blower is always running.**

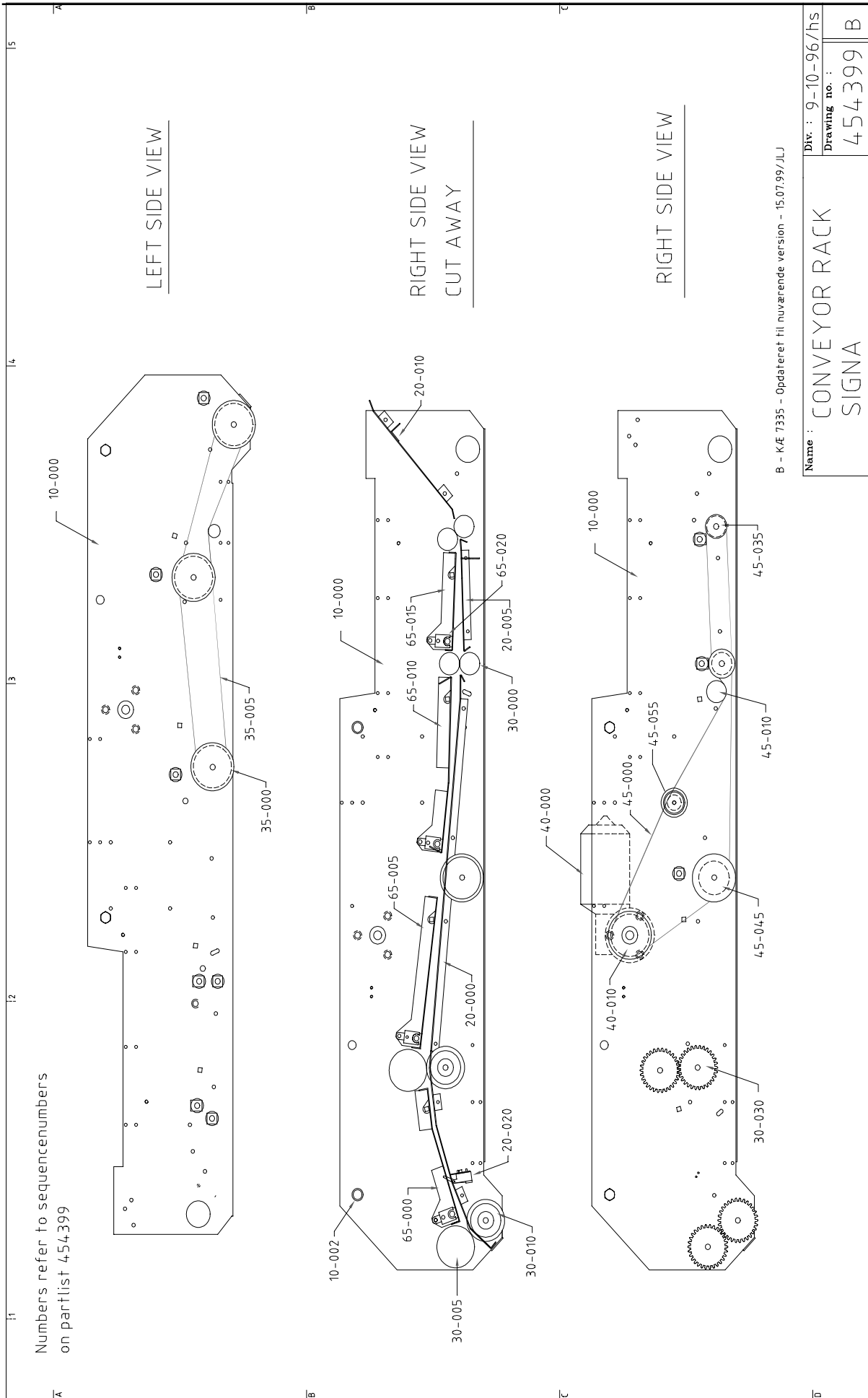


A	Temperature Adjustment Developer	M	Developing Seconds Adjustment
B	Heat ON Indicating Developer	N	NO FEED Signal (Indicates when inserted film is free of inlet) Only used in OFF-LINE position !
C	Temperature Adjustment Fixer	O	Display, shows development seconds and temperature
D	Heat ON Indicator Fixer	P	Error Signal Reset Switch ( <b>NOT USED</b> )
E	Temperature Readout DEV/FIX	Q	Switch for Set Load Signal.
F	Volume On Developer Replenishment (Max. programme approx. 40cc).	R	Switch for Off-Line/On-Line
G	Developer replenish indication	S	Error Signal (Lamp and intern Buzzer) (Flashing and buzzing when the film counter is on 0. Only flashing, when the level in the tank is too low; and only buzzing when there is no exhaust). <b>NOT USED.</b>
H	Volume On Fixer Replenishment (Max. programme approx. 40cc).	T	Load Signal
I	Fixer replenish indication	U	Cut Signal
J	Manual replenish switch	V	Busy Signal
K	Display light ON/OFF	X	Ready Signal
L	Switch for Stand-By/Operate Select. When Stand-By is selected, Error (L) lights continuously.		

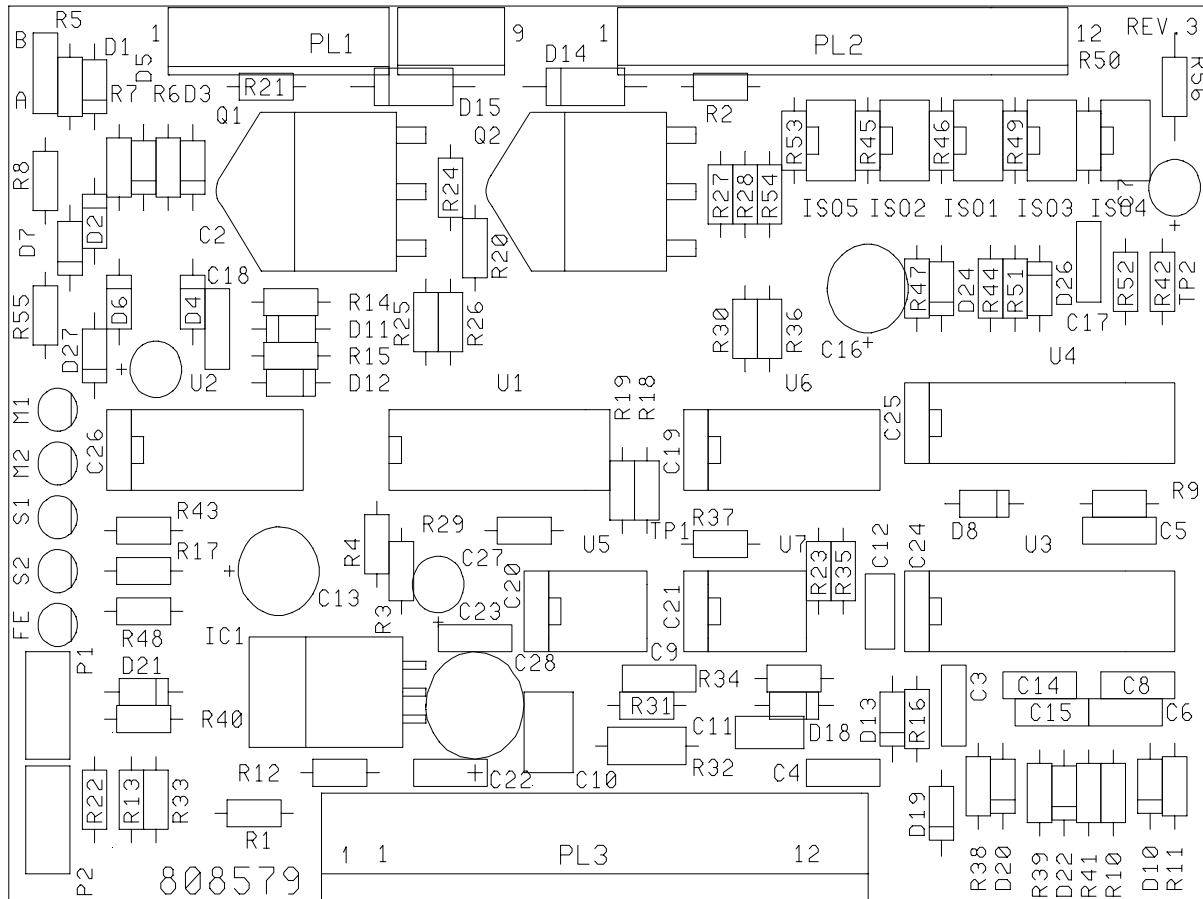
# SECTION EIGHT: On-Line Description Apollo Imagesetter



# SECTION EIGHT: On-Line Description Apollo Imagesetter



## SECTION EIGHT: On-Line Description Apollo Imagesetter



**P1:** Delay between the inlet sensor of the processor is activated and the conveyor motor stops.

**P2:** Conveyor motor speed.

We recommend the following data to be valid for the on-line conveyor for the Apollo imagesetter in order to avoid transport problems:

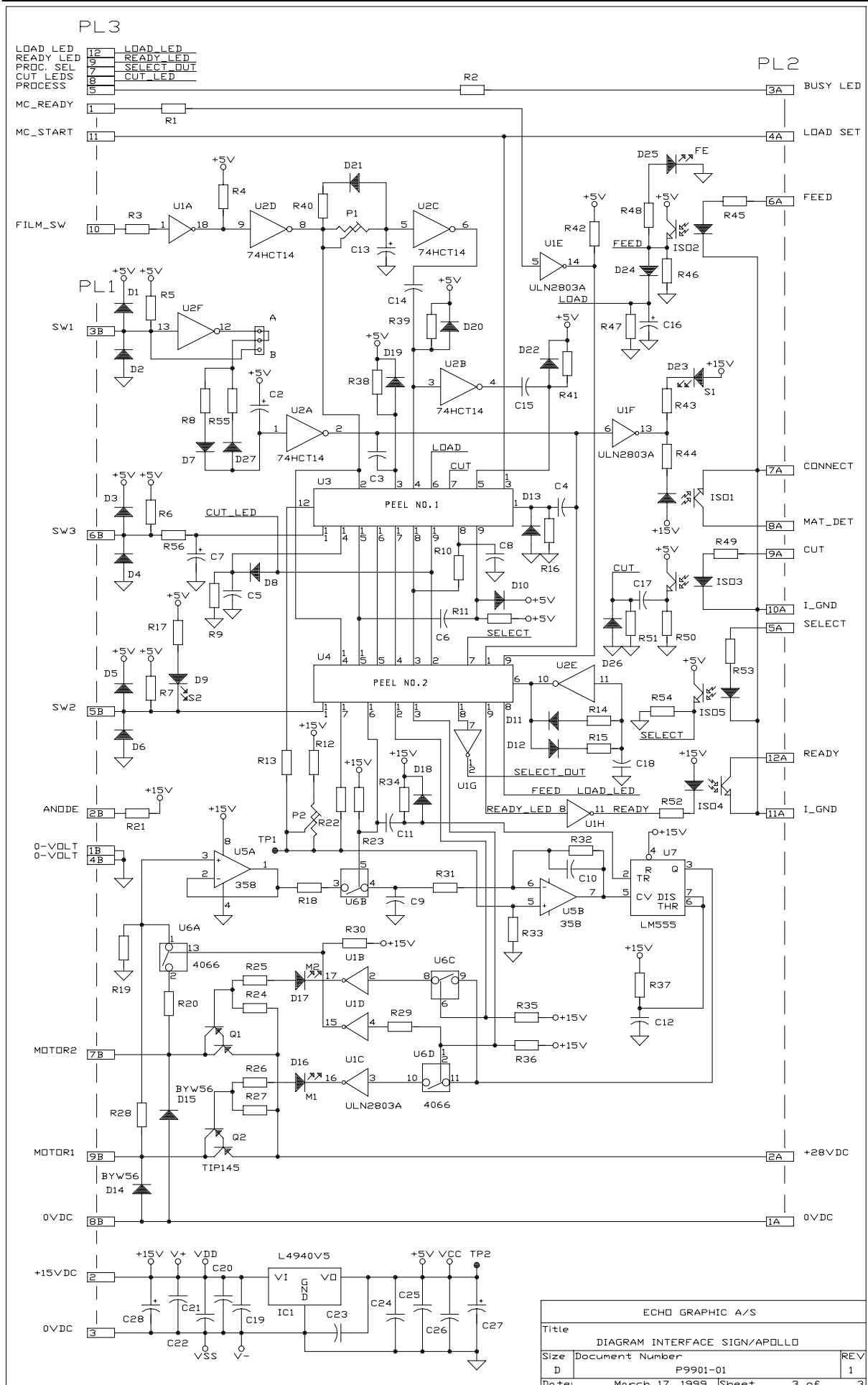
- Speed in conveyor when feeding until the switch (mat. det.) is activated: 3,6 m/min.
- Speed in conveyor when feeding and mat. det. activated : 2,28 m/min.
- Speed in conveyor when feeding and mat. det activated and high speed signal from the imagesetter in force: 5,52 m/min.

The following parameters should be changed in the OLB config menu in the imagesetter:

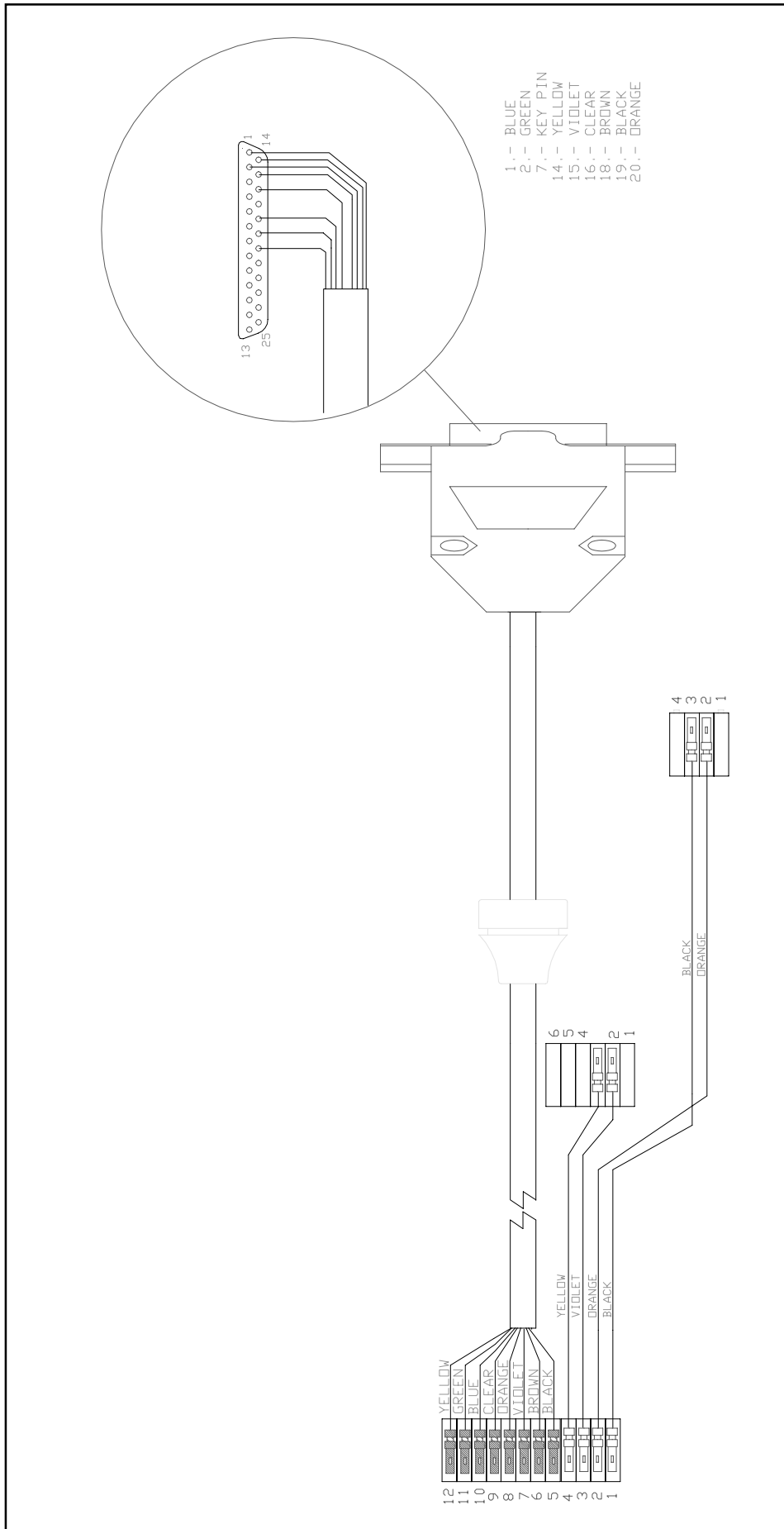
<u>Dist. to In.</u>	Default 80 should be changed to <b>56</b>
<u>Dist. to Det.</u>	Default 160 should be changed to <b>123</b>

### Interface PCB Location

# SECTION EIGHT: On-Line Description Apollo Imagesetter

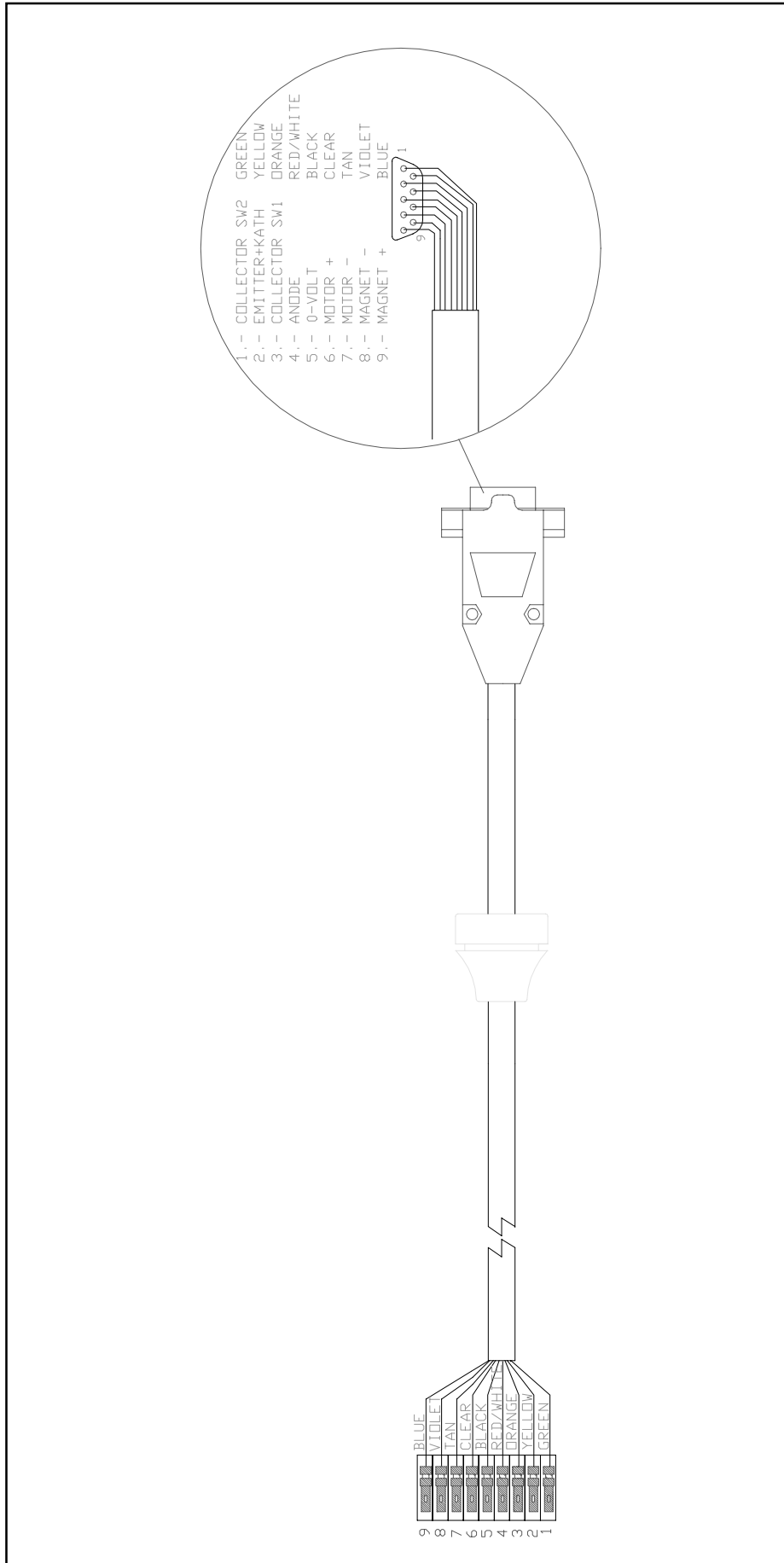


# SECTION EIGHT: On-Line Description Apollo Imagesetter



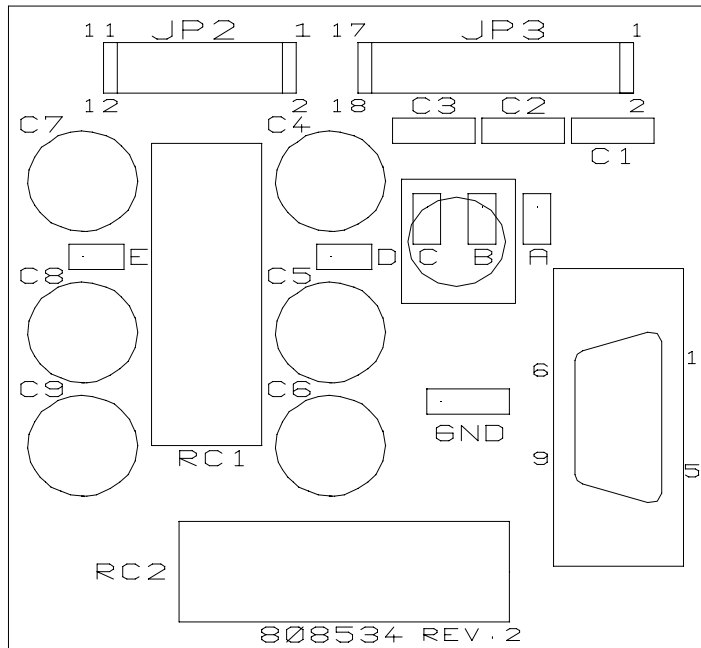
Cable Processor <-> Imagesetter

## SECTION EIGHT: On-Line Description Apollo Imagesetter

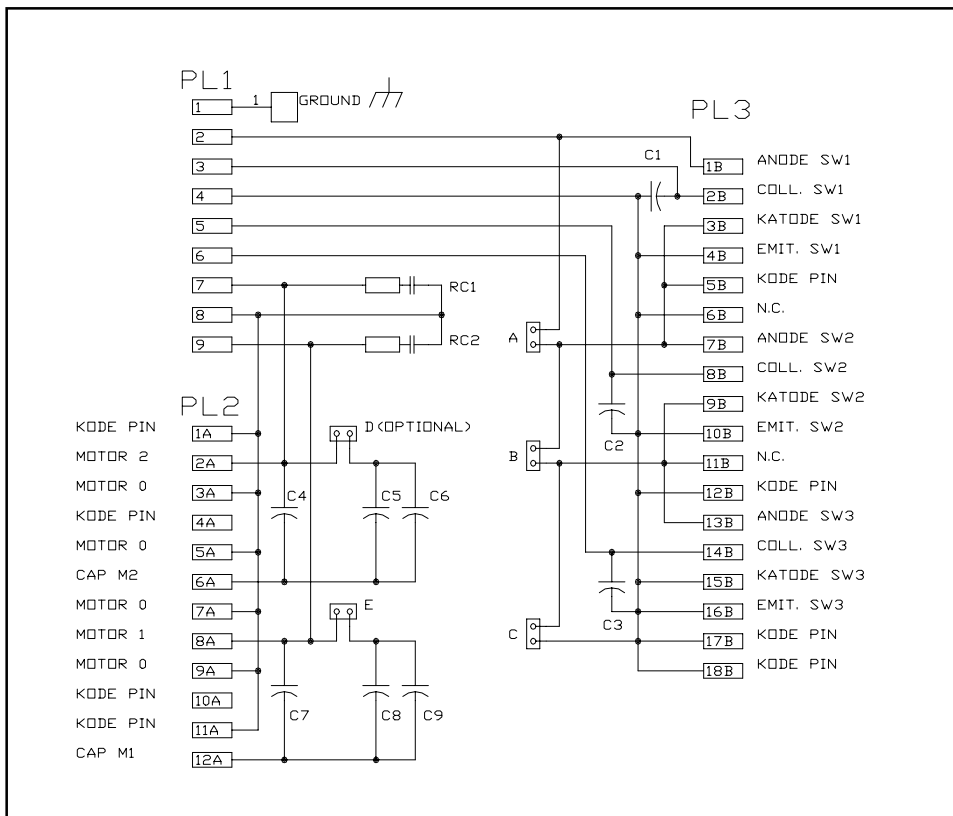


Cable Processor <-> Conveyor

# SECTION EIGHT: On-Line Description Apollo Imagesetter

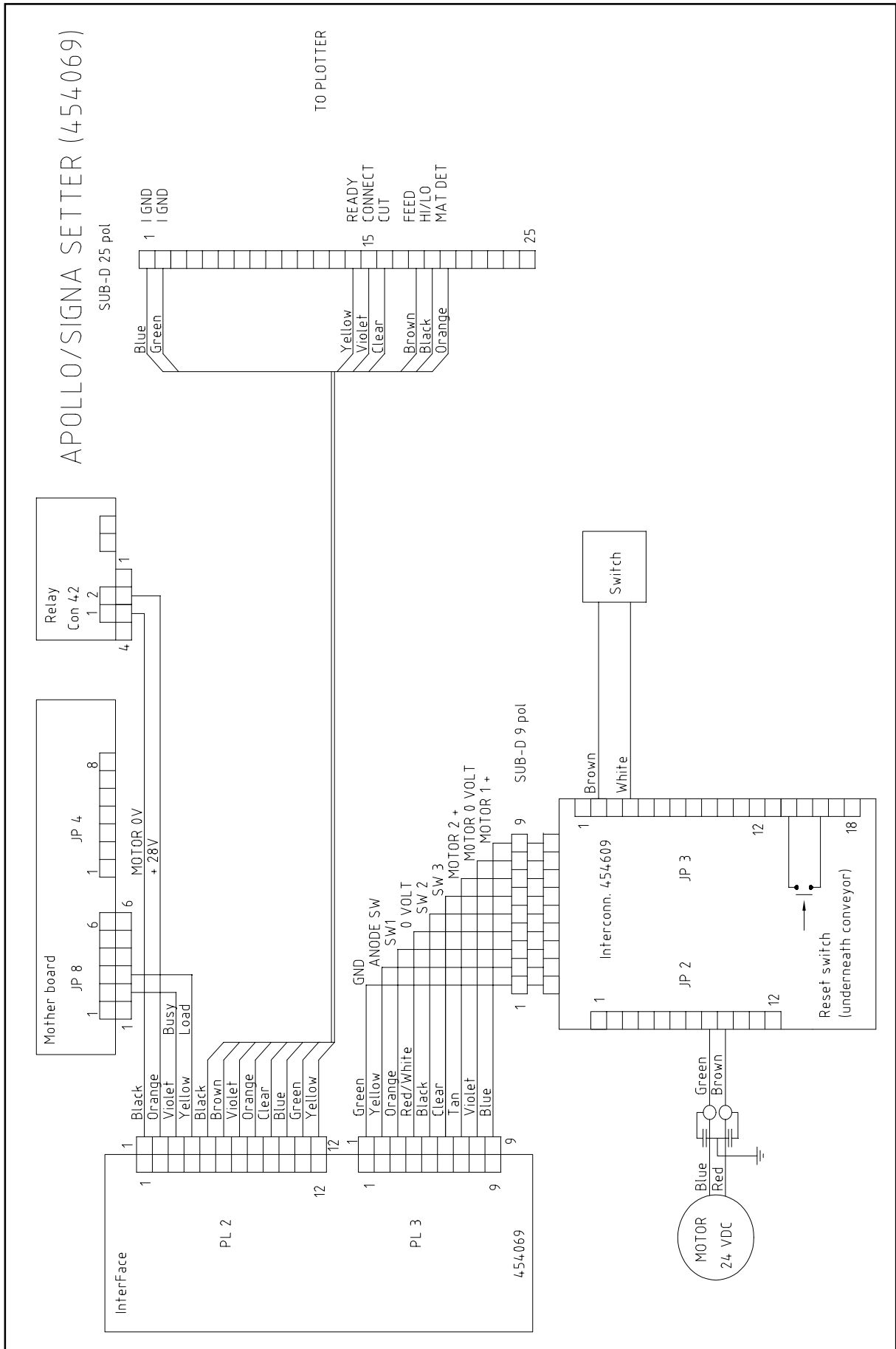


P9806



P9805-01

# SECTION EIGHT: On-Line Description Apollo Imagesetter



454134

Connections between processor - conveyor - imagesetter

# SECTION EIGHT: On-Line Description Apollo Imagesetter

