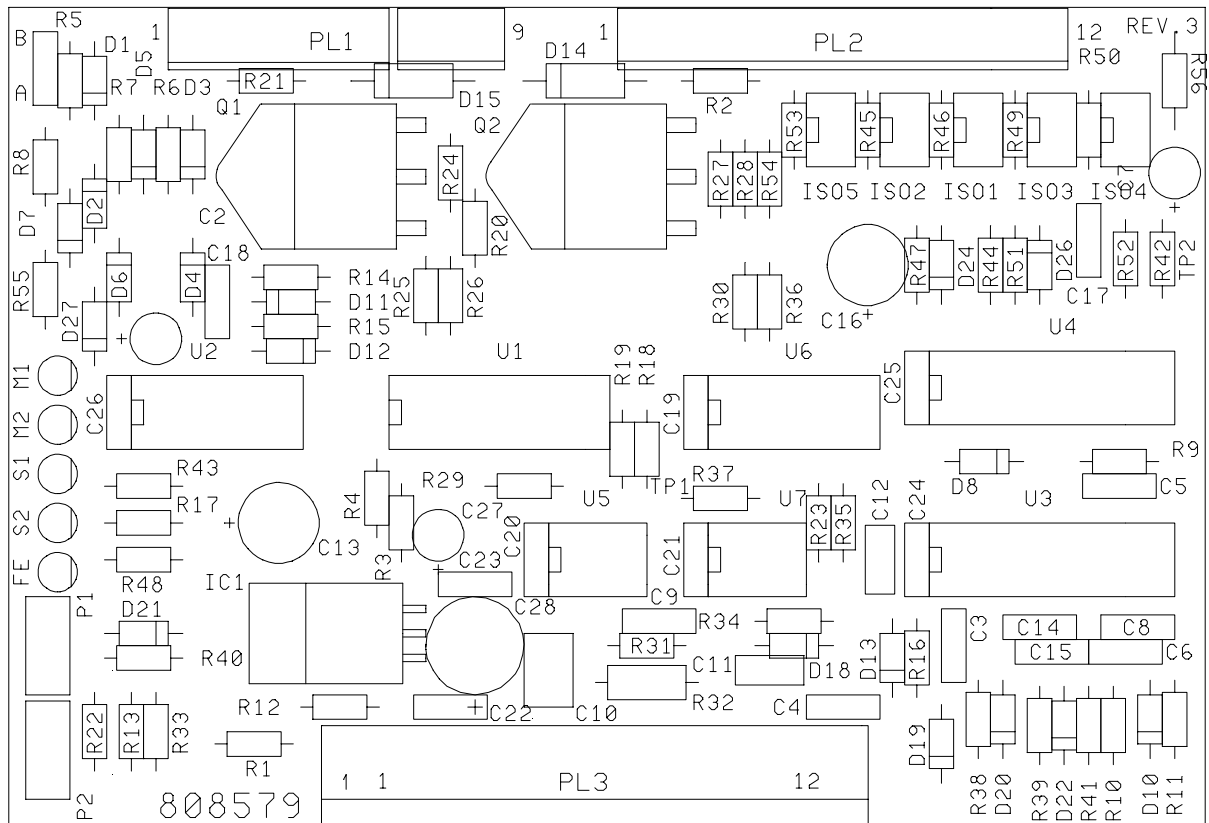




## SECTION EIGHT: On-Line Description Futuro

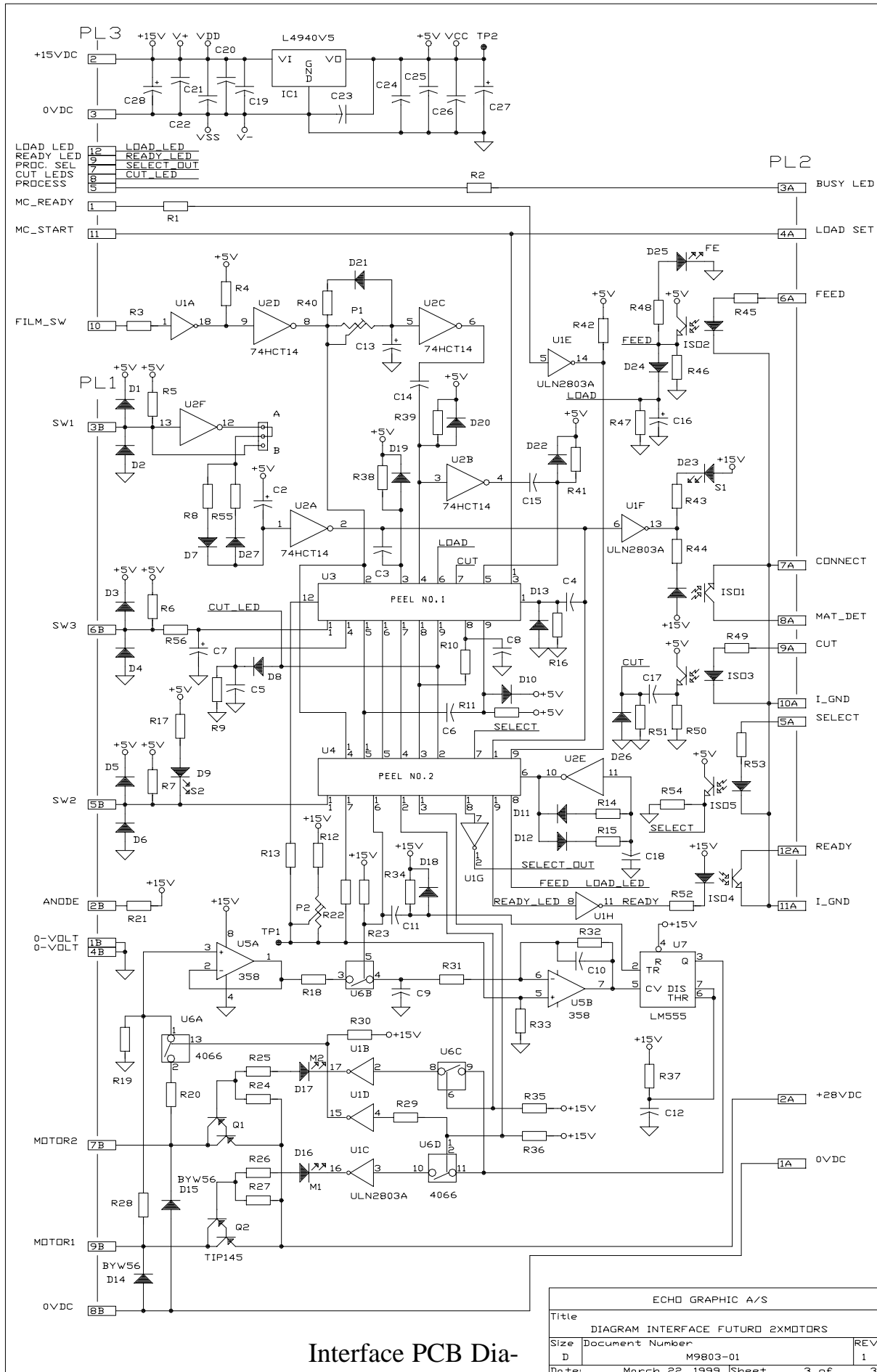


### LED explanation:

- FE:** Led indicates the feed signal from the Futuro.
- S2:** Led indicates the switch in the front of the conveyor that holds off the ready signal if the conveyor is lifted away from the imagesetter.
- S1:** Led indicates the SW1, which is not used.
- M1 and M2:** Led's indicate the signal to the two motors.
- P1:** adjusts a time slot between 2 films enter the processor. P1 is pre-adjusted to work up to 60 sec. dev time.
- P2:** adjusts the conveyor speed. It should be adjusted to 5,02 m/min. ( 10 turns of big rollers in 18,5 s) When adjusting both motor 1 and motor 2 ( Slave) is adjusted.

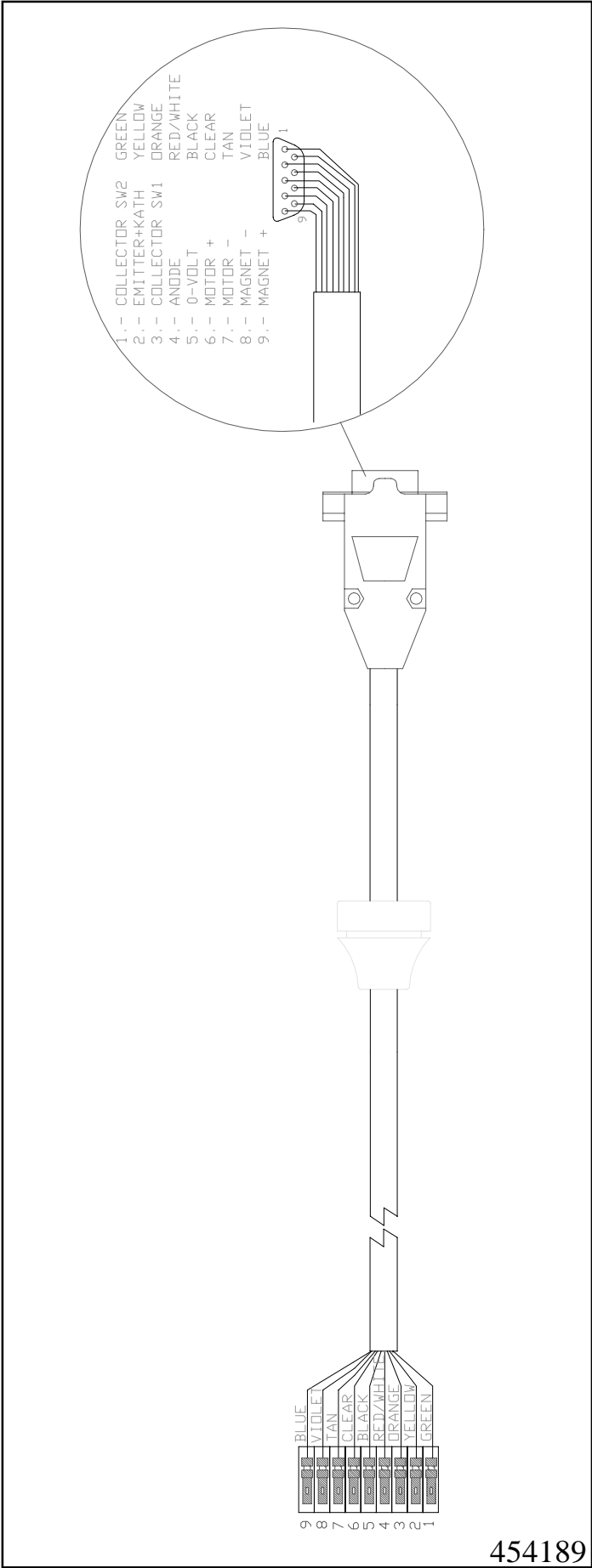
### Interface PCB Location

# SECTION EIGHT: On-Line Description Futuro



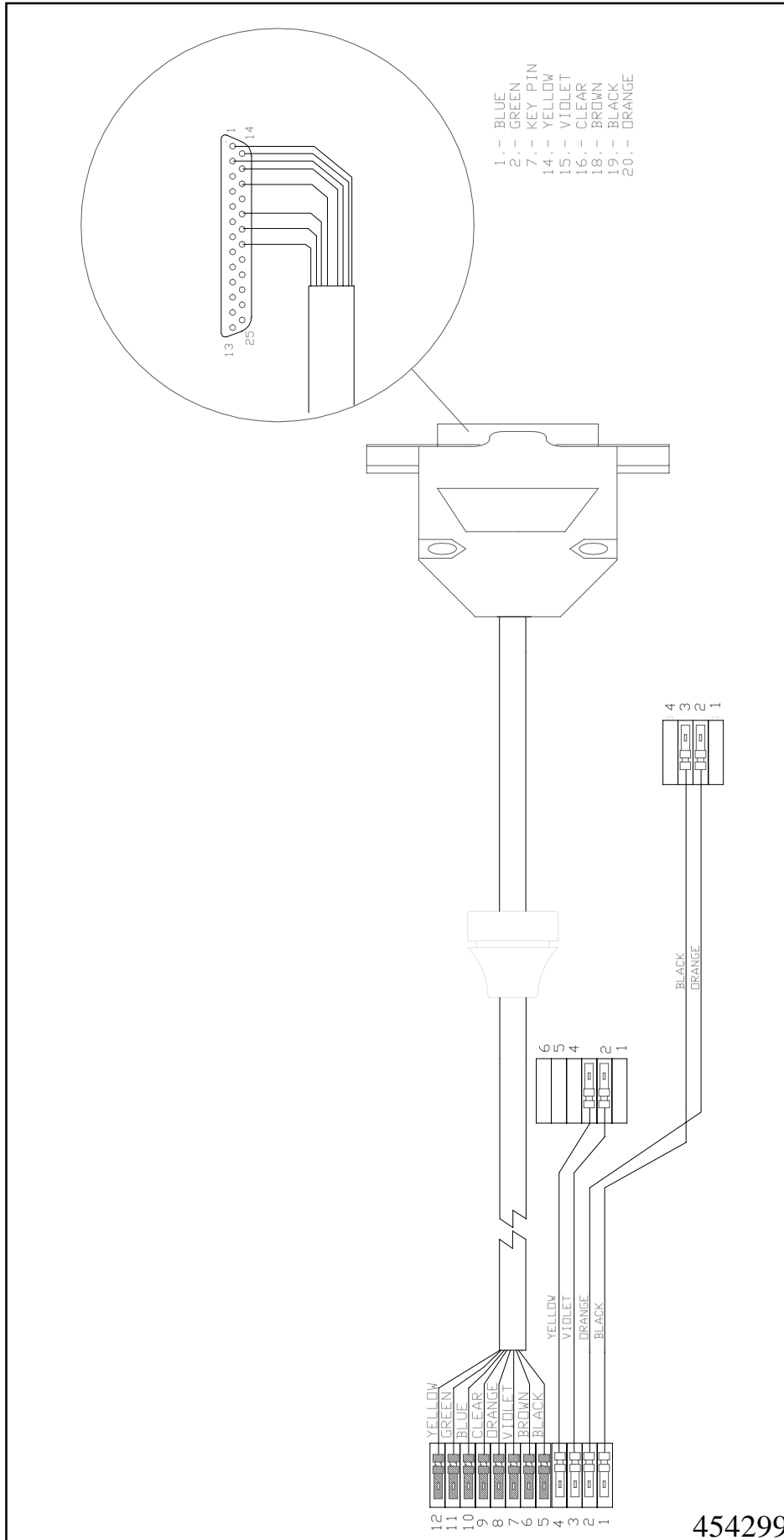
ECHO GRAPHIC A/S		
Title DIAGRAM INTERFACE FUTURO 2XMOTORS		
Size D	Document Number M9803-01	REV 1
Date:	March 22, 1999	Sheet 3 of 3

**SECTION EIGHT: On-Line Description Futuro**



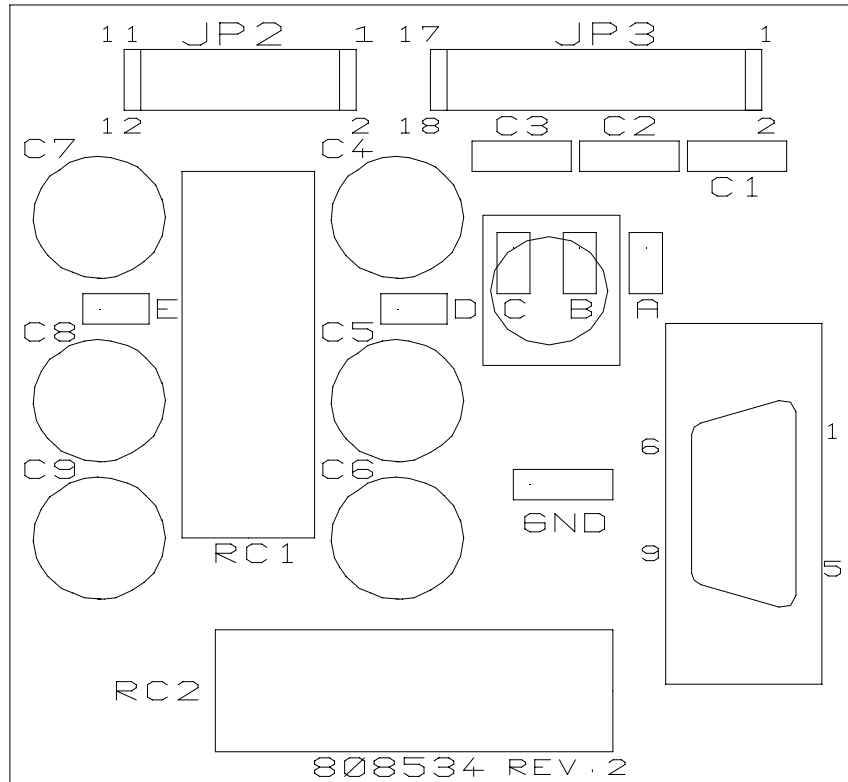
Cable Processor -> Conveyor

# SECTION EIGHT: On-Line Description Futuro

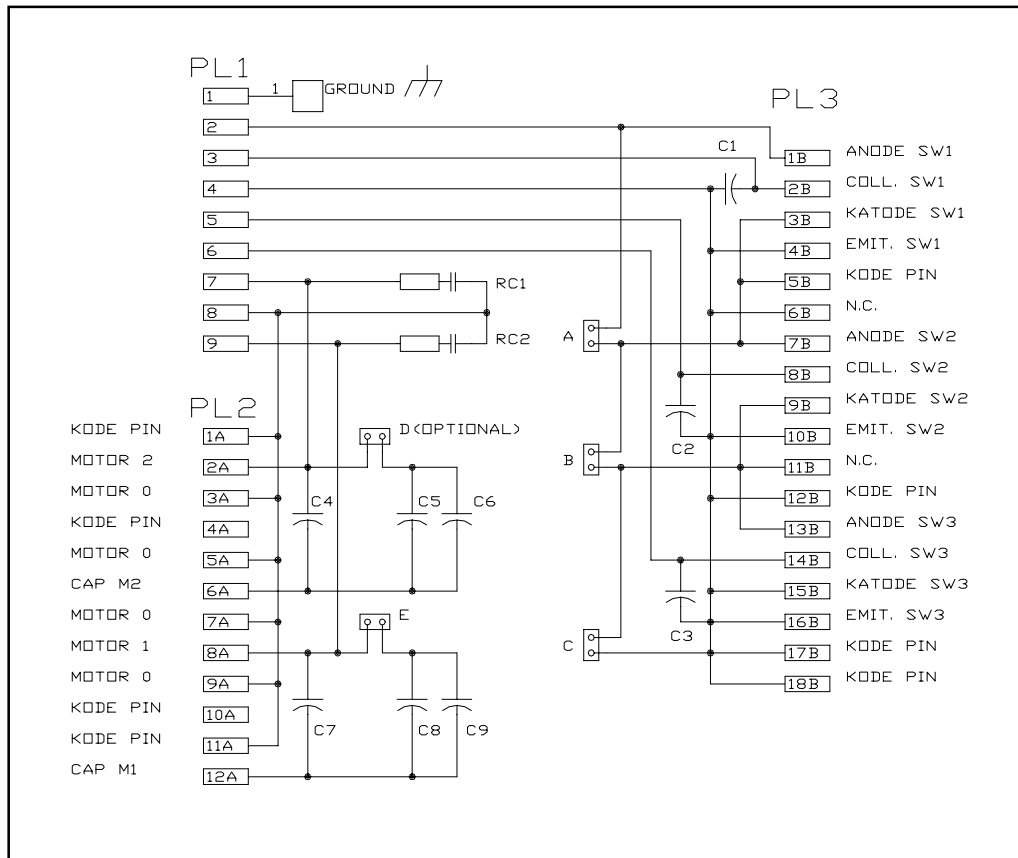


Cable Processor -> Imagesetter

# SECTION EIGHT: On-Line Description Futuro

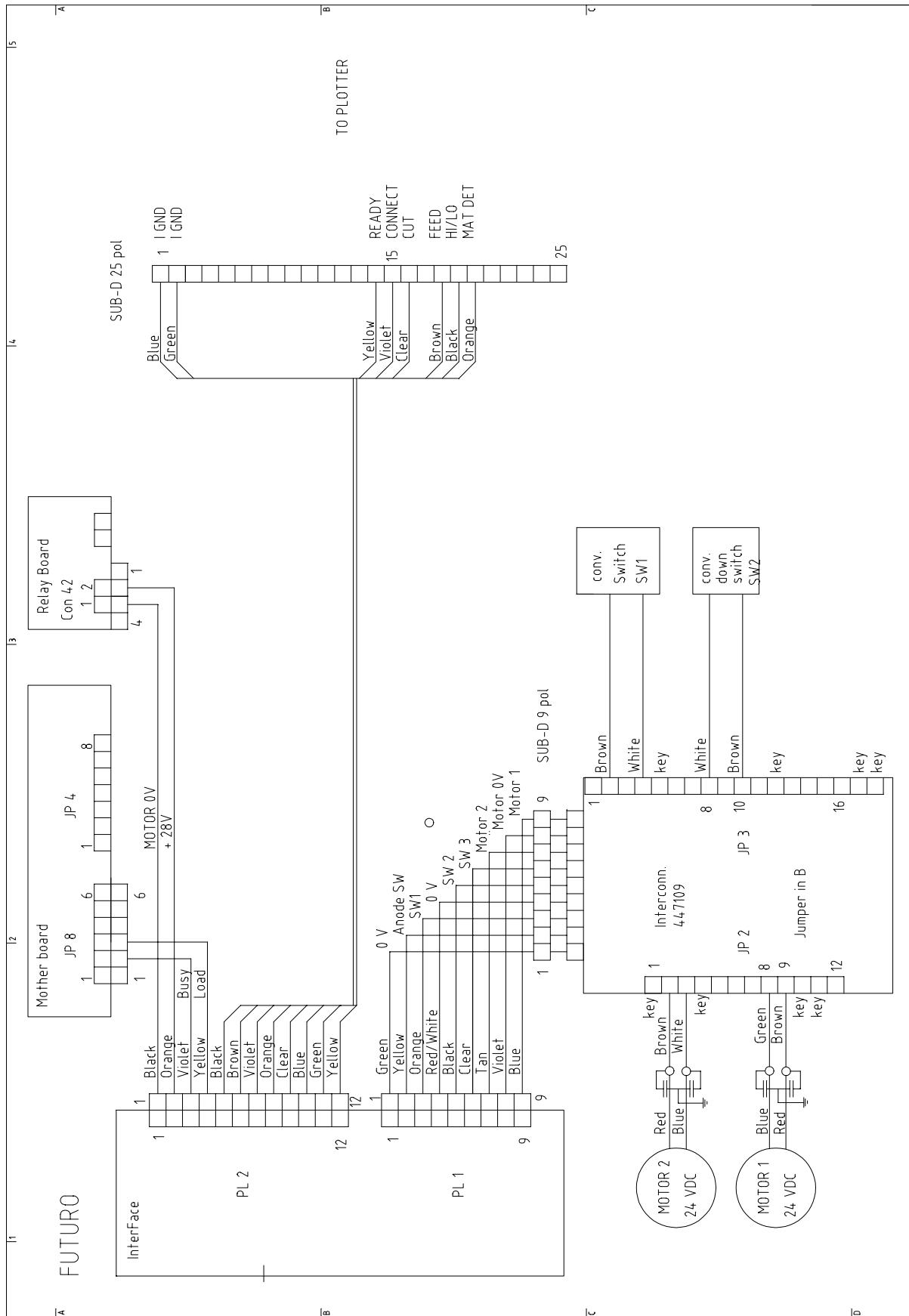


P9806



P9805-01

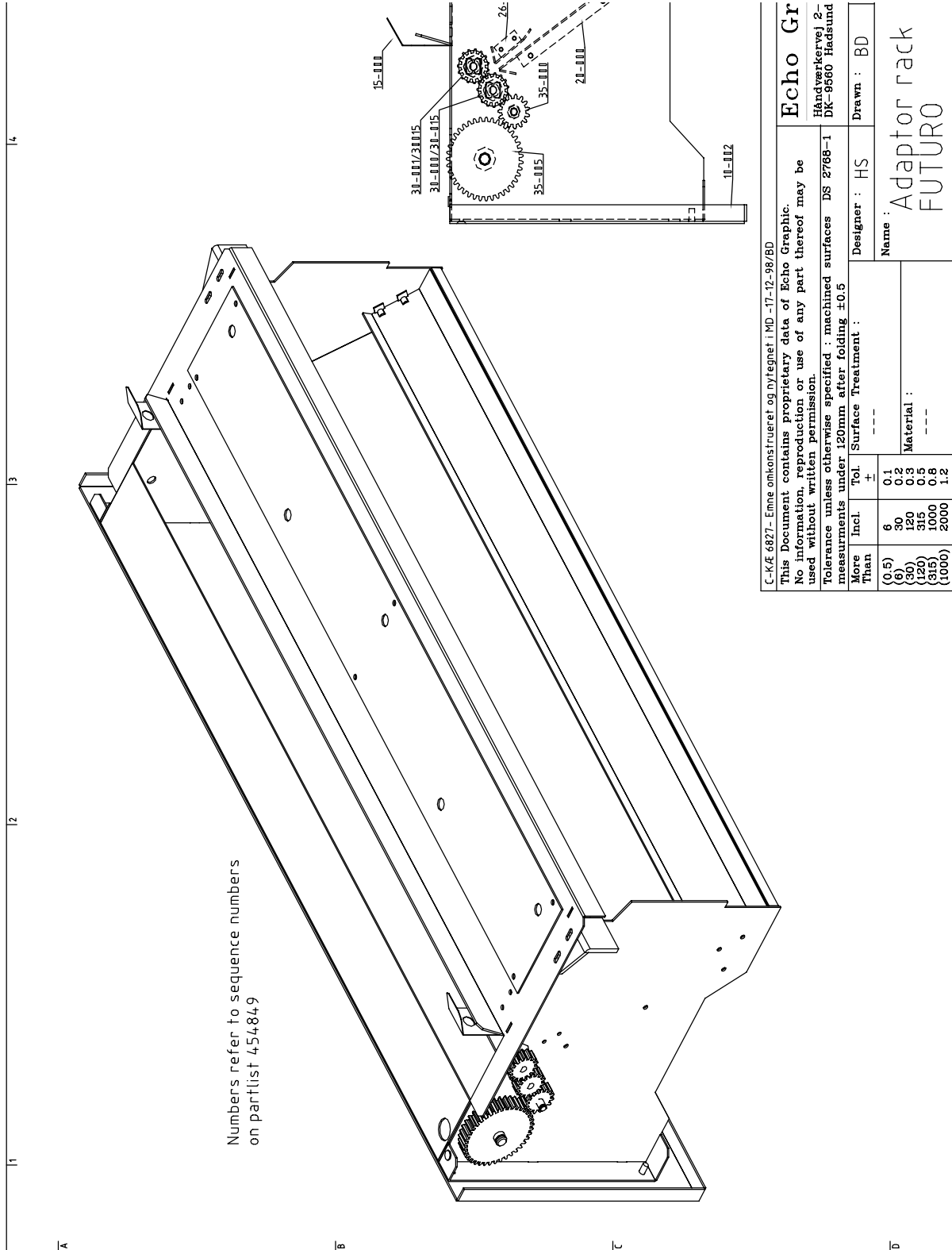
# SECTION EIGHT: On-Line Description Futuro



454574



# SECTION EIGHT: On-Line Description Futuro



Numbers refer to sequence numbers on partlist 454849

C-K/E 6827 - Emne omkonstrueret og nytegnet i MD-17-12-98/BD

This Document contains proprietary data of Echo Graphic.  
No information, reproduction or use of any part thereof may be used without written permission.

Tolerance unless otherwise specified : machined surfaces DS 2768-1 measurements under 120mm after folding ±0.5

More Than	Incl.	Tol.	Surface Treatment
(0.5)	6	±	---
(6)	30	0.1	
(30)	120	0.2	
(120)	180	0.3	
(180)	1000	0.5	
(1000)	2000	0.8	
(2000)		1.2	

**Echo Gr**  
Håndværkervej 2-DK-8560 Hadsund

Designer : HS      Drawn : BD

Name : Adaptor rack  
FUTURO

Adapter rack - conveyor - imagesetter

## **SECTION EIGHT: On-Line Description Futuro**

---

### **Operating sequence Futuro on-line bridge**

- 1 A double page has been exposed, first half is feed out into conveyor and cut.
- 2 After cut, the film is transported directly to the processor.
- 3 Immediately after the first cut, the next film is feed into the conveyor until the film is at the exposure position in the drum. 2 images films are exposed.
- 4 Film no. 2 feeds approx. 5 cm (2") to the cut position and is cut.
- 5 If the first film has passed the processor's input sensor, no. 2 film runs directly to the processor. If the first film is still at the processor's input sensor no. 2 film stops at the last roller set in the conveyor.
- 6 After no. 2 film has been cut, image no. 3 feeds out into the conveyor and is cut, now no. 4 film feeds to the exposure position for image no. 5 and 6, the previous films may buffer up at the processor input and before the last roller set in the conveyor.

### **LED explanation**

FE Led indicates the feed signal from the Futuro.

S2 Led indicates the switch in the front of the conveyor that holds off the ready signal if the conveyor is lifted away from the imagesetter.

S1 Led indicates the SW1, which is not used.

M1 and M2 Led's indicate the signal to the two motors.

P1 adjusts a time slot between 2 films enter the processor. P1 is pre-adjusted to work up to 60 sec. dev time.

P2 adjusts the time before the film stops at the last rollers in the conveyor, the film leading edge should just pass the rollers.

After cut the motors should run full speed until the switch is activated + 0,5 sec.

The busy lamp on the control box comes on, ready goes off, cut on the control box comes on.

Cut goes off again when the switch is activated.