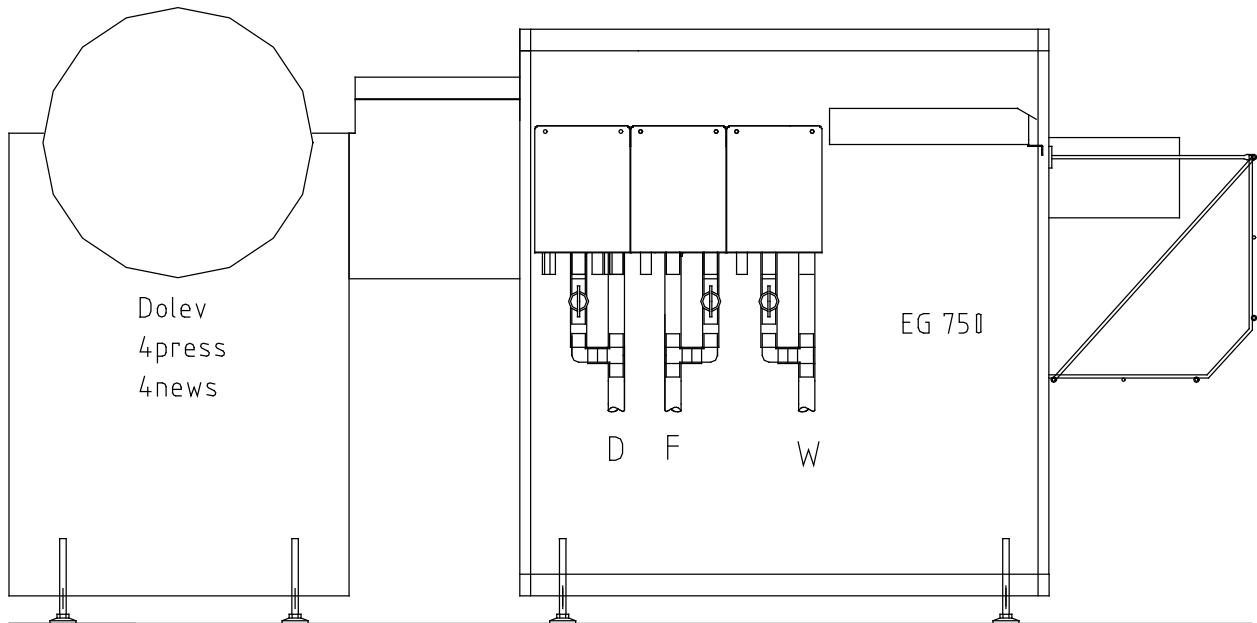


Important

Your on-line processor has a built in exhaust blower. If the main switch is switched off, the blower is disconnected and chemical fumes can damage conveyor/imagesetter. Use the bulid in timer to control on/off/night mode of the processor to ensure that the exhaust blower is always running.



**Creo
Dolev 4press / 4news
Dolev 4press VXL**

**Hope / Carnfeldt
EG 750
EG900**

8.1 General

This section contains the processor’s basic operating instructions for working on-line with an imagesetter.

Before operating the processor on-line, the procedures in section three Installation must be performed. Read this entire section and section four (operation) before attempting to operate the processor.

8.2 Installation of On-Line Section

Special care should be taken when the processor is connected to imagesetter. Is advisable to

install the imagesetter first. The imagesetter should be “levelled” and be put in its final position before the processor is connected.

Install the processor as described in section three. Level the processor in to its final position before the chemistry is added.

Connect the 9 pin interface cable to the Dolev 4press.

Connect the 9 pin interface cable to the conveyor. Turn the power on and test the installation.

Contents

8.1 General.....	89
8.2 Installation of On-Line Section.....	89
8.3 Conveyor Operation.....	91
Conveyor Timer Settings	91
Communication Signals	91
8.4 On-Line Drawings and Settings.....	92
Interface Diagram, Drawing 40802	92
Interface Board Location Drawing 4080102	93
Jumper Settings with CreoScitex Dolev 4press	93
Cable C-Box/Conv. EG 75x/4p, Drawing 129188.....	94
Cable EG 75x-Plotter 4press, Drawing 129298.....	95
Installation View Conveyor	96
Conveyor, Drawing 129407.....	97
R2 Rack drawings	98
Dry R38 Rack Side Right, Drawing 316108	104
Rack Side Section View Right/Left Dry R38, Drawing 316108	105
Installationview 6312.....	107
Installationview 6371.....	108
Interconnection diagram	109
Blockiagram.....	110
Technical specifications	111

Edition:24 Mar 2003

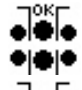




Product number:

129916

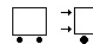
129965



8.3 Conveyor Operation

The operation of the conveyor is displayed on the left icon. Please observe the conveyor icons:

-  Empty conveyor, ready.
-  Film is being transported in to the conveyor.
-  Film is in the conveyor.
-  Film has entered the processor.
-  Off-line feed.

Communication Signals


To display the signals from the imagesetter use the information screen shown below. To access from the main menu push **S**  **→**. For more information see section four Operation.

	CON1	CON2	CON3	CON4
IN-PUT	1	0	0	0
	PH01	PH02	PH03	PH04
	1	1	1	1

CONX - Status conveyor switches.
PHOX - Status signals from imagesetter.

CON1 - SW1 (the first sensor). 1 = Activated
CON2 - SW2 (the second sensor). 1 = Activated

PH01 - PH04 - Dolev signals

 Settings of timer and conveyor speed are adjusted in the service menu. To access the service menu please see section 5.7

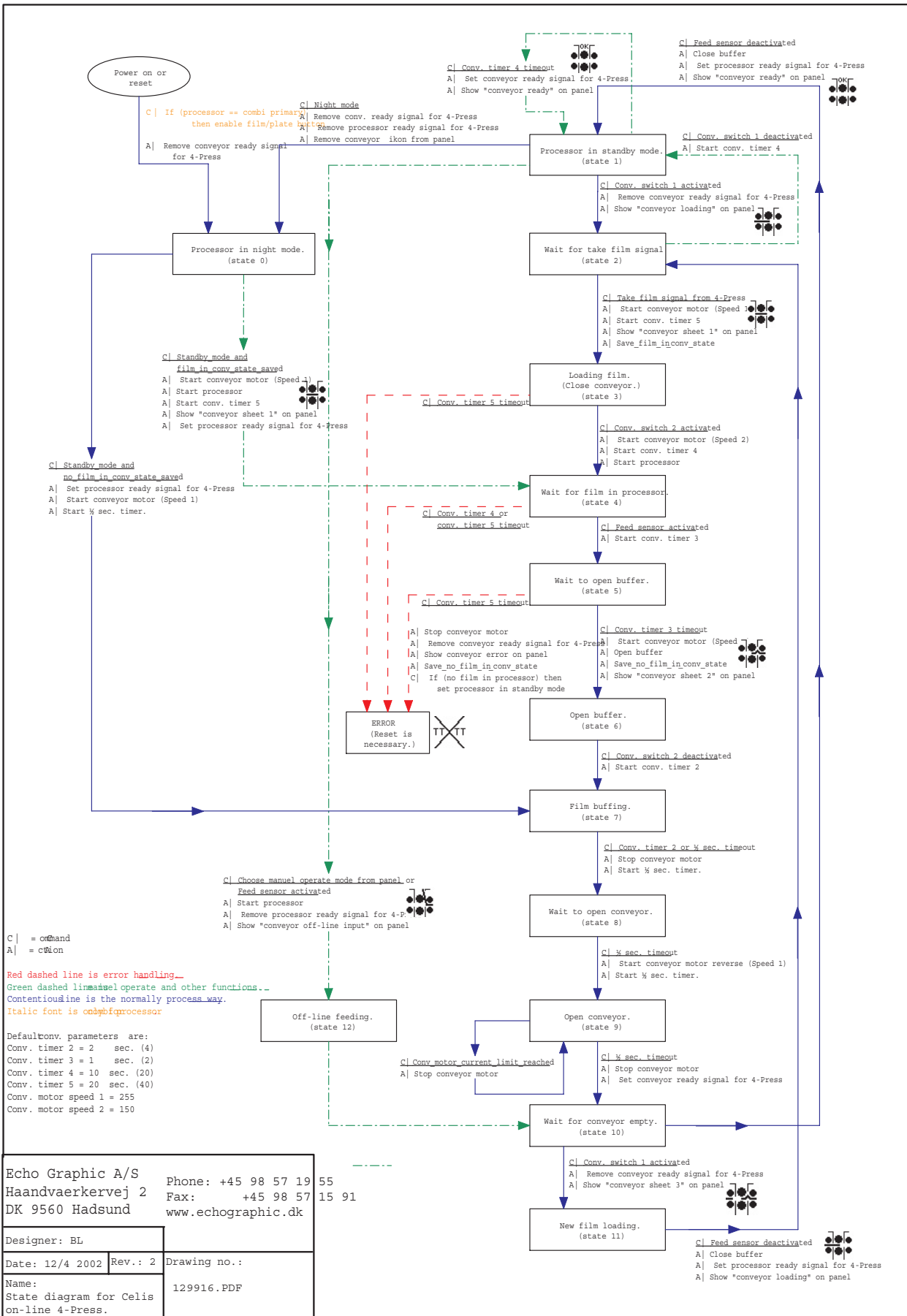
Conveyor Timer Settings

<u>Number</u>	<u>Settings</u>	<u>Units</u>	<u>Description</u>
Conv. Timer 1	-	0,5 Sec	Not Used
Conv. Timer 2	4	0,5 Sec	Film Loop End: Time to the conveyor reverses, from SW2 (upper sensor in conv.) not active .
Conv. Timer 3	0	0,5 Sec	No-Feed delay: The time activation of the inlet sensor to the buffer open.
Conv. Timer 4	20	0,5 Sec	Error time out: SW2 - Inlet sensor.
Conv. Timer 5	40	0,5 Sec	Error time out: Take film - no feed delay end.

Conveyor/Photoset 2. CreoScitex Dolev 4press

	Mk3/Mk4 (Mk3= Sw ver 2.xx (no units) / MK4= Sw ver 4.xx)	
Conv. motor speed1	255/Max mm/s	Speed after Cut
Conv. motor speed2	150/80 mm/s	Speed after inlet sensor is activated

SECTION EIGHT: On-Line Description Creo Models



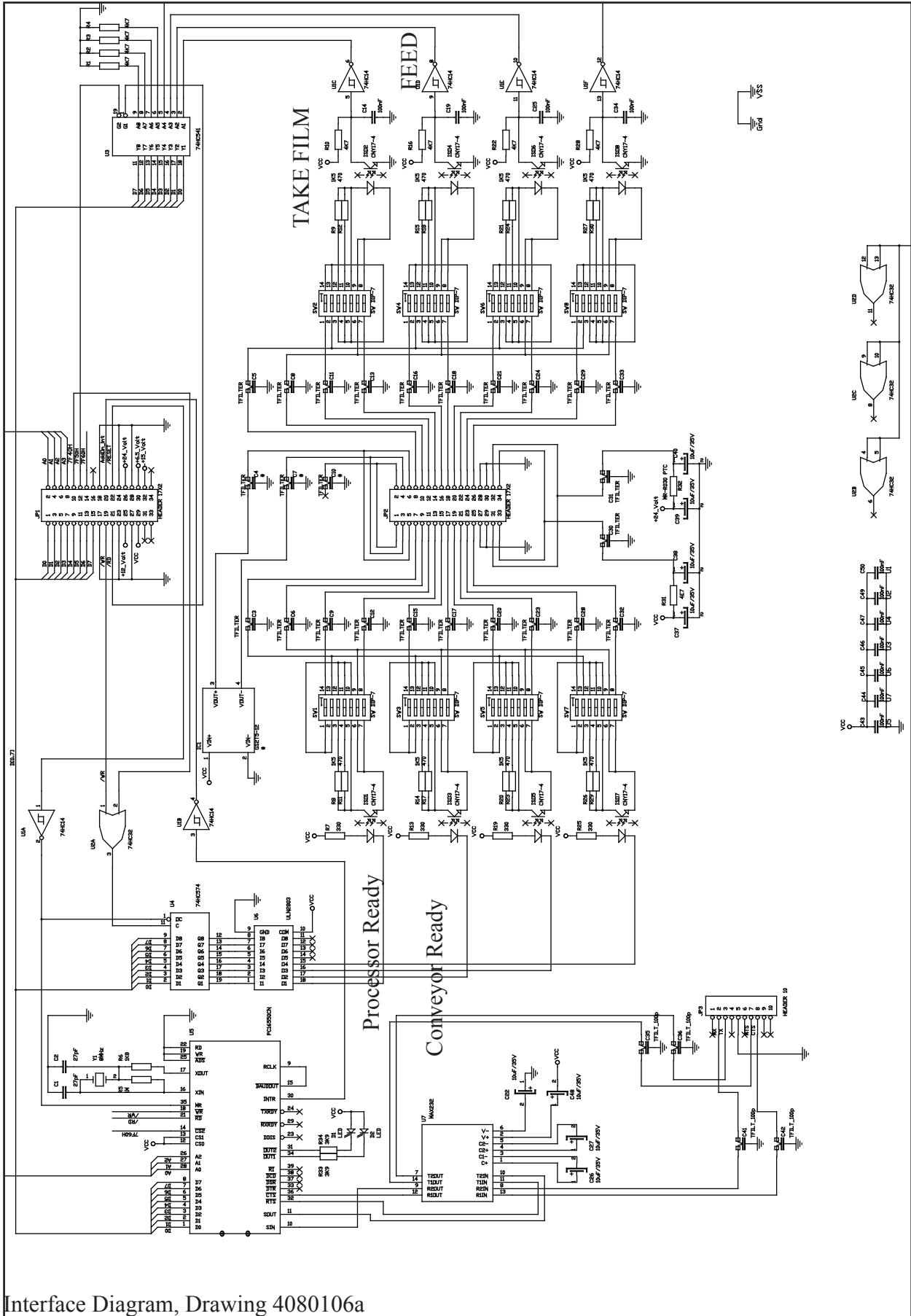
SECTION 8

Echo Graphic A/S Phone: +45 98 57 19 55
 Haandvaerkervej 2 Fax: +45 98 57 15 91
 DK 9560 Hadsund www.echographic.dk

Designer: BL	
Date: 12/4 2002 Rev.: 2	Drawing no.:
Name: State diagram for Celis on-line 4-Press.	129916.PDF

State diagram Dolev 4Press

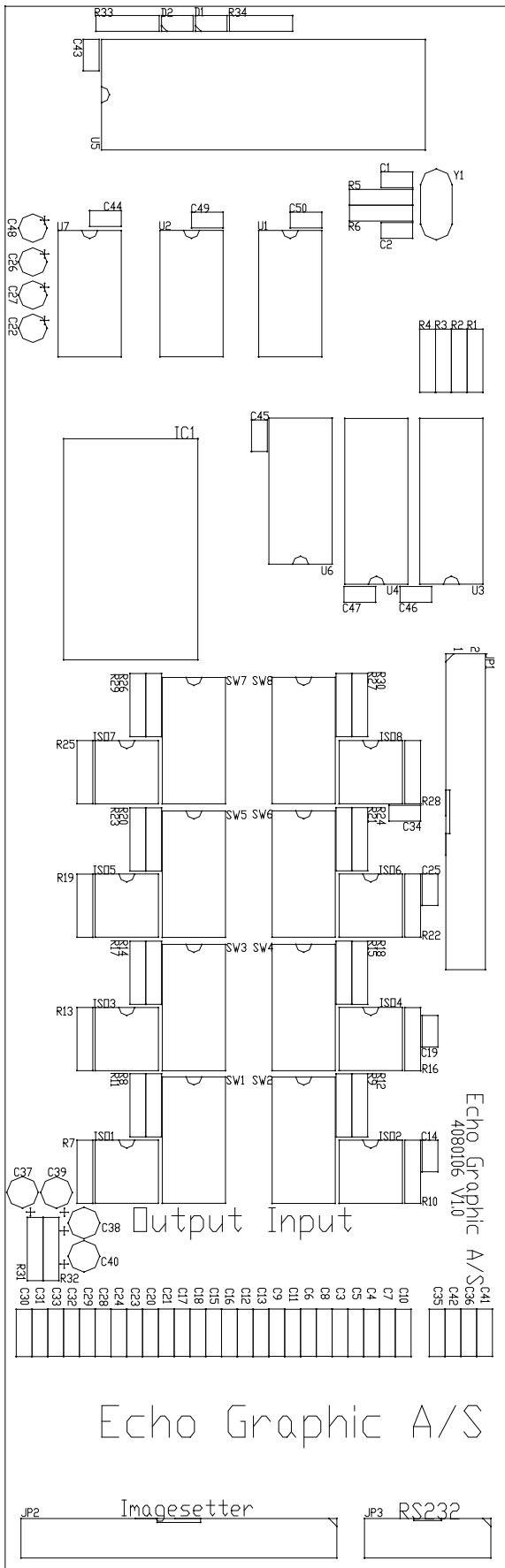
8.4 On-line drawings and settings



Interface Diagram, Drawing 4080106a

SECTION EIGHT: On-Line Description Creo Models

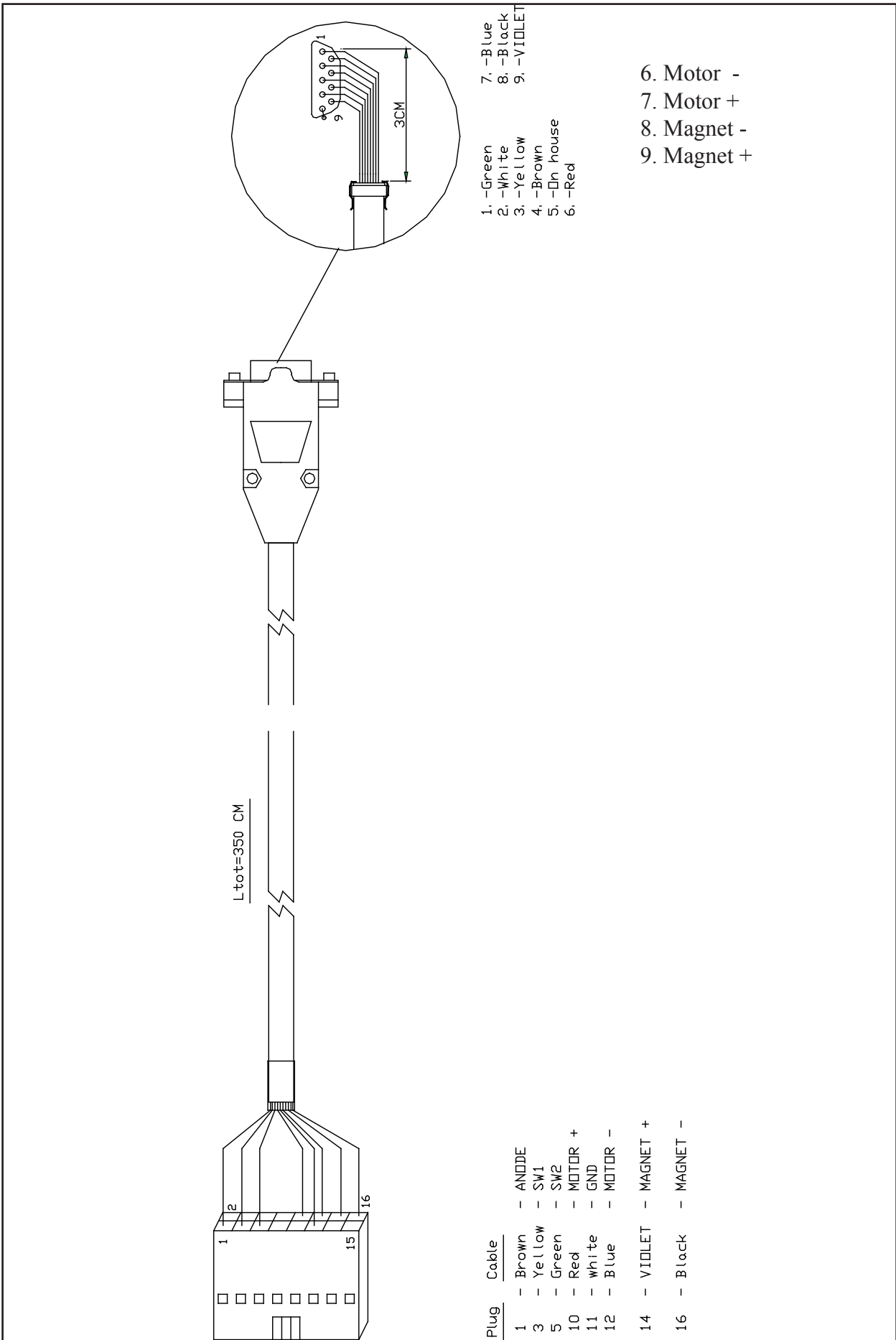
SECTION 8



Jumper Settings with Creo Dolev 4Press

SWITCH	POS 1	POS 2	POS 3	POS 4	POS 5	POS 6	POS 7
SW1	ON	ON	ON	ON	ON	ON	ON
SW2	ON	ON	ON	ON	ON	ON	ON
SW3	ON	ON	ON	ON	ON	ON	ON
SW4	ON	ON	ON	ON	ON	ON	ON
SW5	ON	ON	ON	ON	ON	ON	ON
SW6	ON	ON	ON	ON	ON	ON	ON
SW7	ON	ON	ON	ON	ON	ON	ON
SW8	ON	ON	ON	ON	ON	ON	ON

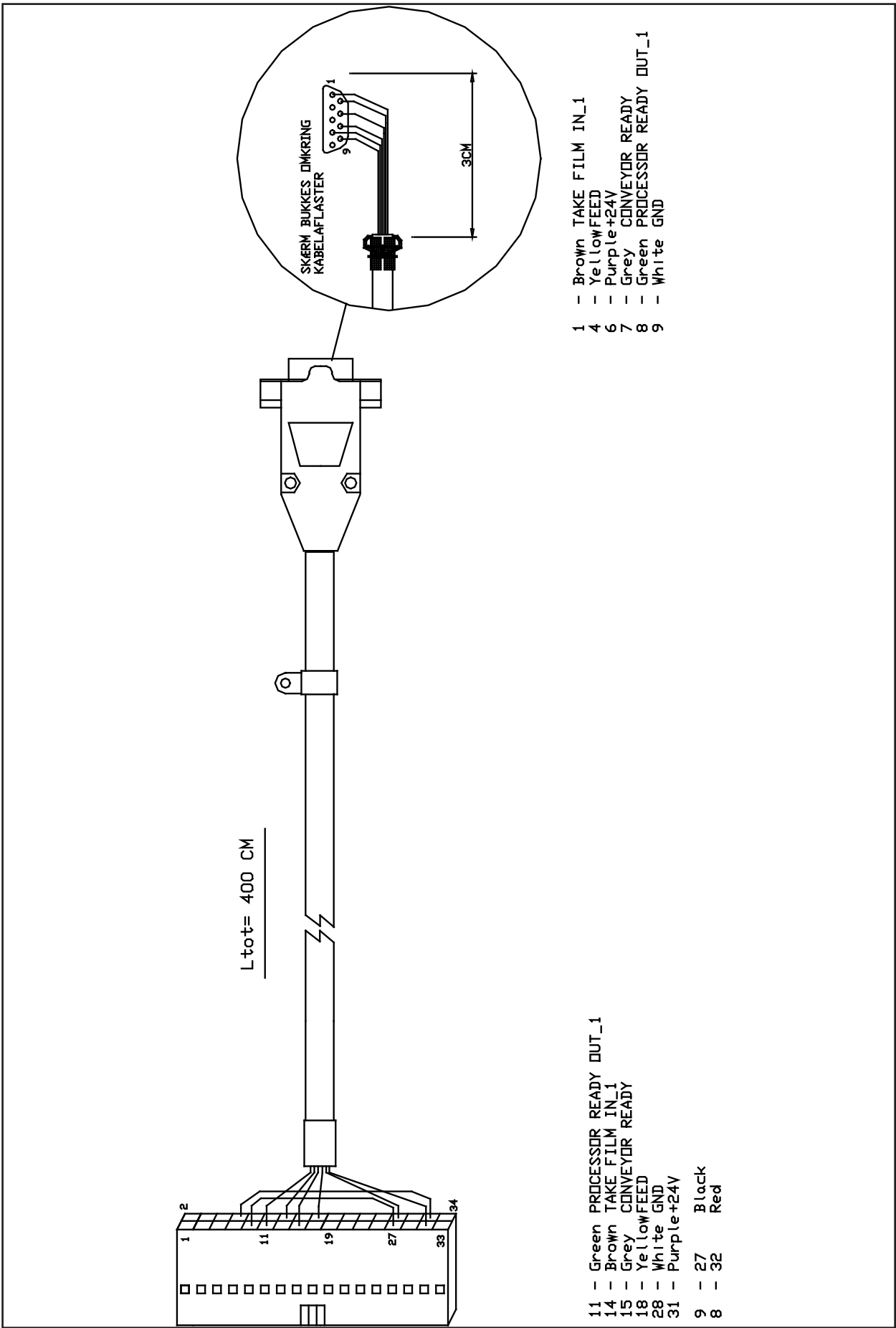
Interface Board Location Drawing 4080106b



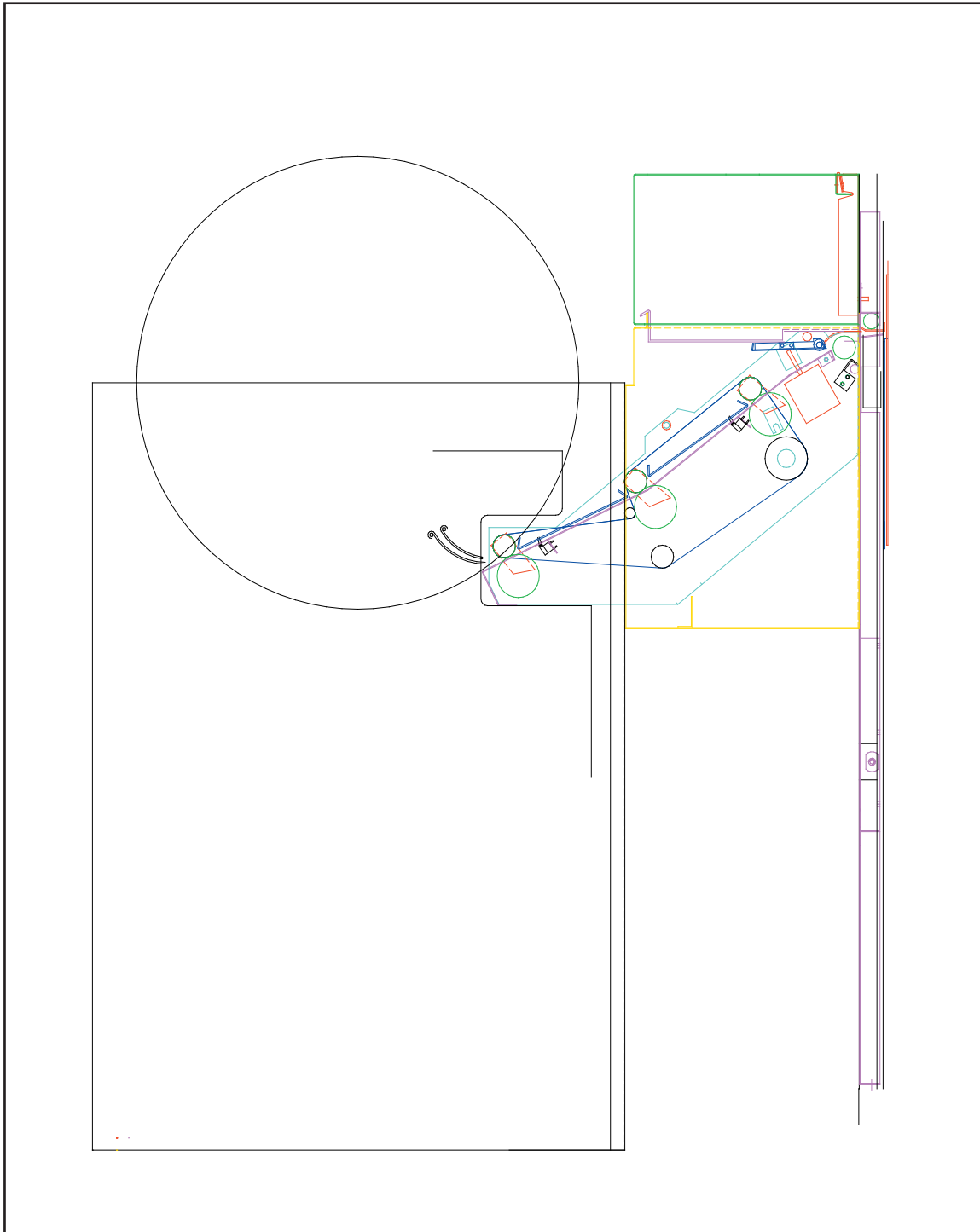
Cable C-Box/Conv. EG 75x/4p, Drawing 129188

SECTION EIGHT: On-Line Description Creo Models

SECTION 8



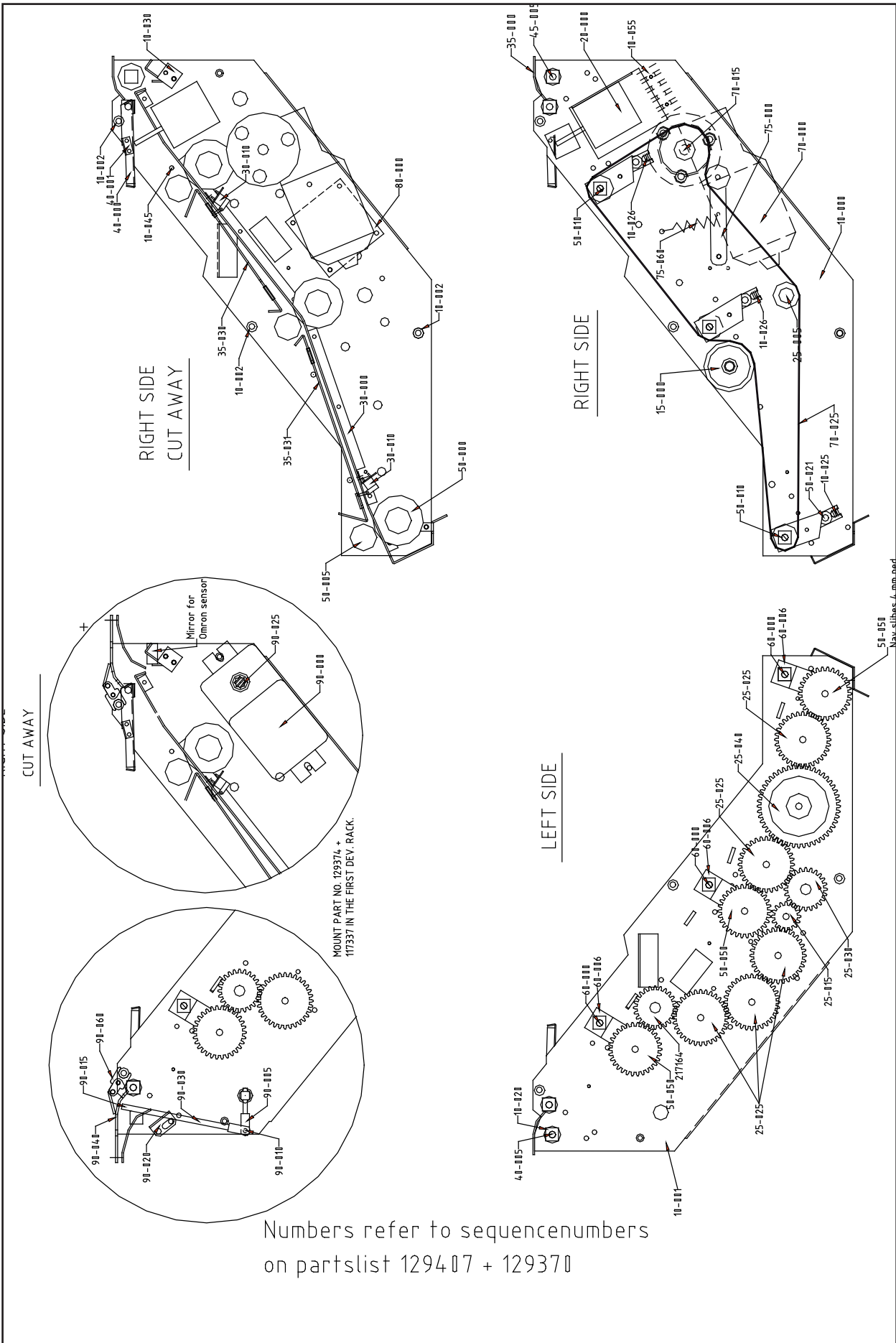
Cable EG 75x-Plotter 4press, Drawing 129297



Installation View Conveyor

SECTION EIGHT: On-Line Description Creo Models

SECTION 8



Conveyor, Drawing 129407

SECTION EIGHT: On-Line Description Creo Models

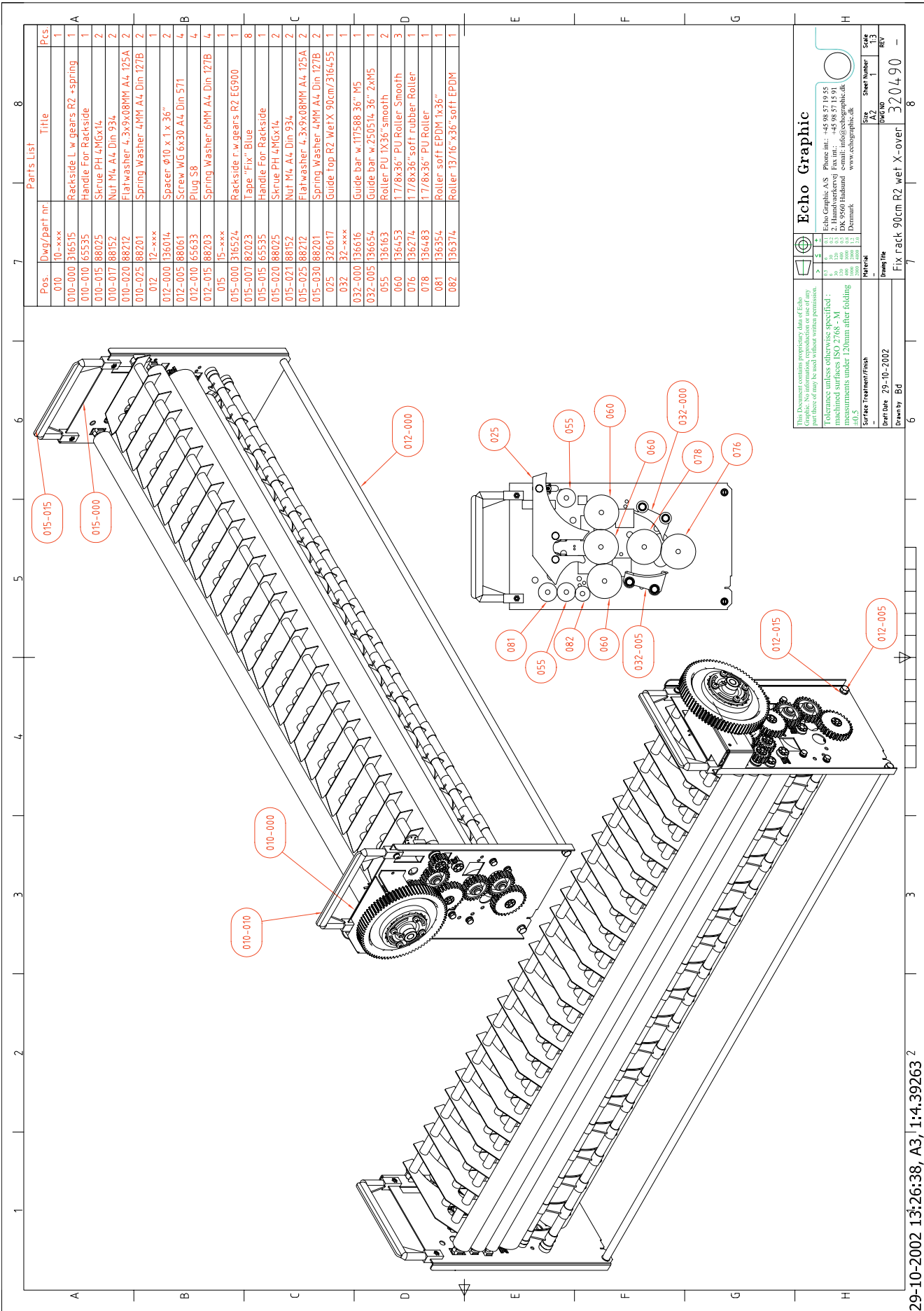
Parts List	
Pos.	Title
010	10-xxxx
010-000	Rackside L w gears R2 +spring
010-010	Handle For Rackside
010-015	Skru PH 4/MGX14
010-017	Nut M4 A4, Din 934
010-020	Flatwasher 4, 3x9x08MM A4, 125A
010-025	Spring Washer 4MM A4, Din 127/B
012	12-xxxx
012-000	Spacer Ø10 x 1 x 36"
012-005	Screw MG 6x30 A4, Din 571
012-010	Plug S8
012-015	Spring Washer 6MM A4, Din 127/B
015	15-xxxx
015-000	Rackside R w gears R2 +spring
015-015	Handle For Rackside
015-020	Skru PH 4/MGX14
015-021	Nut M4 A4, Din 934
015-025	Flat washer 4, 3x9x08MM A4, 125A
015-030	Spring Washer 4MM A4, Din 127/B
025	320615
032	32-xxxx
032-000	Guide bar w 117588 36" M5
032-005	Guide bar w 250514 36" 2xM5
050	50-xxxx
050-000	17/8x36" PU Roller Smooth
050-005	Starlock 1/42" stainless
050-010	17/4" X12x12 BEARING
050-015	Ø-Axle 3. generation
060	136453
076	136274
078	136483
081	136354
082	136374
085	136163

Echo Graphic Echo Graphic A/S Phone nr.: +45 98 57 19 55 Fax nr.: +45 98 57 15 91 E-mail: info@echo-graphic.dk www.echo-graphic.dk									
Tolerance unless otherwise specified: machined surfaces ISO 2768-M measurements under 120mm after folding									
Dev/Wash rack 90cm R2									
Drawn by: Bd									
Date: 23-10-2002									
Scale: 1:1									
Sheet Number: 320499									
Rev: 1									

Rack Drawing Dev-Wash EG900 / 36" 4 Press XL

SECTION EIGHT: On-Line Description Creo Models

SECTION 8



Pos.	Dwg/part nr.	Title	Pcs.
010	10-xxx		1
010-000	016515	Rackside L w gears R2 +spring	1
010-010	65535	Handle For Rackside	1
010-015	88025	Skrue PH 4 Mgx14	2
010-017	88152	Nut M4 A4 Din 934	2
010-020	88212	Flatwasher 4, 3x9x08MM A4, 125A	2
010-025	88201	Spring Washer 4MM A4 Din 127B	2
012	12-xxx		1
012-000	36014	Spacer Ø10 x 1 x 36"	2
012-005	88061	Screw WG 6x30 A4 Din 571	4
012-010	65633	Plug S8	4
012-015	88203	Spring Washer 6MM A4 Din 127B	4
015	15-xxx		1
015-000	016524	Rackside r w gears R2 EG900	1
015-007	82023	Tappe "Fix" Blue	8
015-015	65535	Handle For Rackside	1
015-020	88025	Skrue PH 4 Mgx14	2
015-021	88152	Nut M4 A4 Din 934	2
015-030	88201	Spring Washer 4MM A4 Din 127B	2
025	320617	Guide top R2 wetX 90cm/316455	1
032	32-xxx		1
032-000	136616	Guide bar w 117588 36" M5	1
032-005	136654	Guide bar w 250514 36" 2xM5	1
055	136163	Roller PU 1x36" smooth	2
060	136453	17/8x36" PU Roller Smooth	3
076	136274	17/8x36" soft rubber Roller	1
078	136483	17/8x36" PU Roller	1
081	136354	Roller soft EPDM 1x36"	1
082	136374	Roller 13716" x 36" soft EPDM	1

Echo Graphic

Echo Graphic A/S Phone int.: +45 98 57 19 55
 2. Håndværkvej Fax int.: +45 98 57 18 91
 DK-9500 Randers e-mail: info@echographic.dk
 www.echographic.dk

This document contains proprietary data of Echo Graphic. The use of this data for other purposes may be used without written permission. Tolerances unless otherwise specified: machined surfaces ISO 2768-M measurements under 120mm after folding ±0.5

Material	
Surface Treatment/finish	
Issue Date	29-10-2002
Drawn by	Bd
Sheet number	320490
DWG NO	320490
REV	8

Fix rack 90cm R2 wet X-over

29-10-2002 13:26:38, A3, 1:4.39263 2

Rack Drawing Fix EG900 / 36" 4 Press XL

SECTION EIGHT: On-Line Description Creo Models

SECTION 8

Parts List		
Pos.	Dwg/part nr.	Title
001	316352	Rackside EG R2 left
002	316354	Bearing bracket f drivaxle w.
003	217184	1/4" x12x12 BEARING
004	276044	D-Axle 3. generation
005	65266	Gearwheel 30-T 1/4. In - D
006	65270	Gearwheel 16-T 1/4. In D
007	65274	Pulley 1/4" - ϕ
008	276034	ϕ -Axle 3. generation
009	117337	Startlock 1/4.2' sstainless
010	217164	Gearwheel 24-T 10.2 ϕ
011	65271	Gearwheel 16-T 1/4. In ϕ
012	65283	Gearwheel 36-T ϕ 10.2 MM
013	217040	Bearing ϕ 10.15 x 10
014	117518	36 T Gearwheel NV16
015	117528	Gear wheel 32-T NV 16
016	275154	Connector NV 16
017	316064	Drive axle ϕ 100.5 f EG750
018	276154	Gearwheel 24-T 10.2 ϕ
019	68325	Torque Clutch 80T/10 ϕ Compl.
020	65188	Coffler Pins 2.5 ϕ A4. Din 94
021	88246	Lock Disc 15x9.5xMM
022	155584	Spring F Airquide HD Dry
023	65557	Disc 10 ϕ x16x1 Nylon
024	88201	Spring Washer 4MM A4. Din 127B
025	88216	Flatwasher 10x21x2mm A4. D125
026	88311	Screw Mg 4x8 A4. Din 963

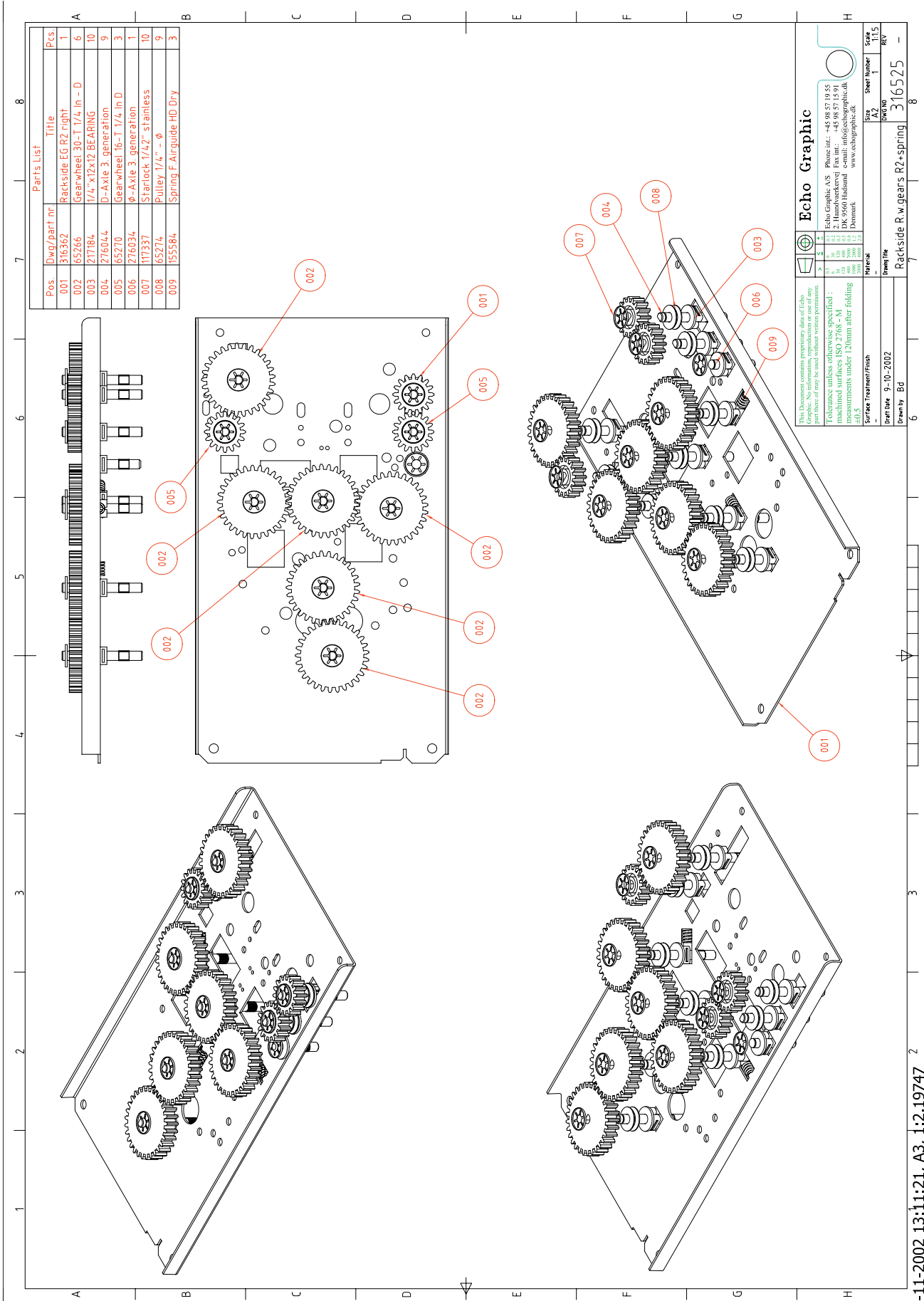
Echo Graphic
 Echo Graphic A/S Phone int: +45 98 57 19 55
 2. Håndværkervej Fax int: +45 98 57 15 91
 3. Håndværkervej Fax ext: +45 98 57 15 91
 4. Håndværkervej Fax ext: +45 98 57 15 91
 5. Håndværkervej Fax ext: +45 98 57 15 91
 6. Håndværkervej Fax ext: +45 98 57 15 91
 7. Håndværkervej Fax ext: +45 98 57 15 91
 8. Håndværkervej Fax ext: +45 98 57 15 91
 9. Håndværkervej Fax ext: +45 98 57 15 91
 10. Håndværkervej Fax ext: +45 98 57 15 91
 11. Håndværkervej Fax ext: +45 98 57 15 91
 12. Håndværkervej Fax ext: +45 98 57 15 91
 13. Håndværkervej Fax ext: +45 98 57 15 91
 14. Håndværkervej Fax ext: +45 98 57 15 91
 15. Håndværkervej Fax ext: +45 98 57 15 91
 16. Håndværkervej Fax ext: +45 98 57 15 91
 17. Håndværkervej Fax ext: +45 98 57 15 91
 18. Håndværkervej Fax ext: +45 98 57 15 91
 19. Håndværkervej Fax ext: +45 98 57 15 91
 20. Håndværkervej Fax ext: +45 98 57 15 91
 21. Håndværkervej Fax ext: +45 98 57 15 91
 22. Håndværkervej Fax ext: +45 98 57 15 91
 23. Håndværkervej Fax ext: +45 98 57 15 91
 24. Håndværkervej Fax ext: +45 98 57 15 91
 25. Håndværkervej Fax ext: +45 98 57 15 91
 26. Håndværkervej Fax ext: +45 98 57 15 91

This document contains proprietary data of Echo Graphic. It is not to be used without written permission. Tolerance unless otherwise specified: machined surfaces ISO 2768 - M measurements under 120mm after folding.

Surface Treatment/Finish: A2
 Def Date: 07-10-2002
 Drawing No: 316515
 Rev: 1
 Sheet Number: 8
 Title: Rackside L w.gears R2 +springs

Gear Drawing Left Dev-fix-Wash EG750/900

SECTION EIGHT: On-Line Description Creo Models



Gear Drawing Right EG 750/900

01-11-2002 13:11:21, A3, 1:2.19747 2

SECTION 8

SECTION EIGHT: On-Line Description Creo Models

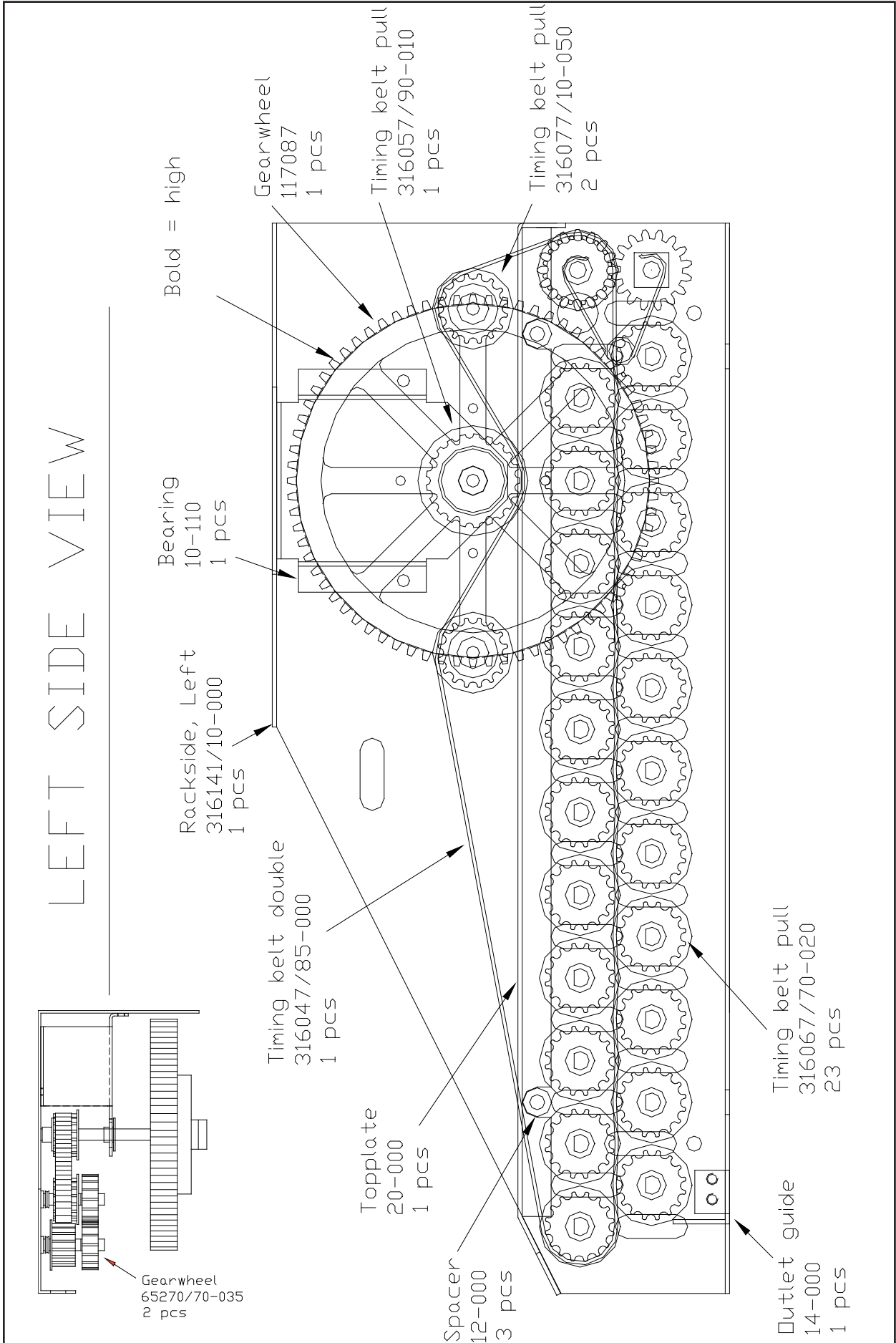
SECTION 8

Pos	Dwg/part nr	Title	Pcs
001	276044	D-Axle 3 generation	7
002	117337	Starlock 1/42" stainless	9
003	65274	Pulley 1/4" - Ø	7
004	155584	Spring F Airguide HD Dry	3
005	217184	1/4" x12x12 BEARING	9
006	276034	Ø-Axle 3 generation	2
007	316362	Rackside EG RZ right	1
008	65266	Gearwheel 30-T 1/4 In - D	5
009	65270	Gearwheel 16-T 1/4 In D	2

ECHO GRAPHIC	
This document contains proprietary data of Echo Graphic A/S. It is not to be distributed outside your files or used for any other purpose without written permission.	Echo Graphic A/S Phone int.: +45 98 57 19 55 2. Håndværkvej Fax int.: +45 98 57 15 91 DK-9500 Haldensø e-mail: info@echographic.dk www.echographic.dk
Surface Treatment/finish Material Scale Sheet Number	Date Drawn by Scale REV
Issue Date: 08-10-2002 Drawn by: BD	Sheet Number: 1 DWS: HD Rackside R.w.gears R2+spring 316524 - REV: -

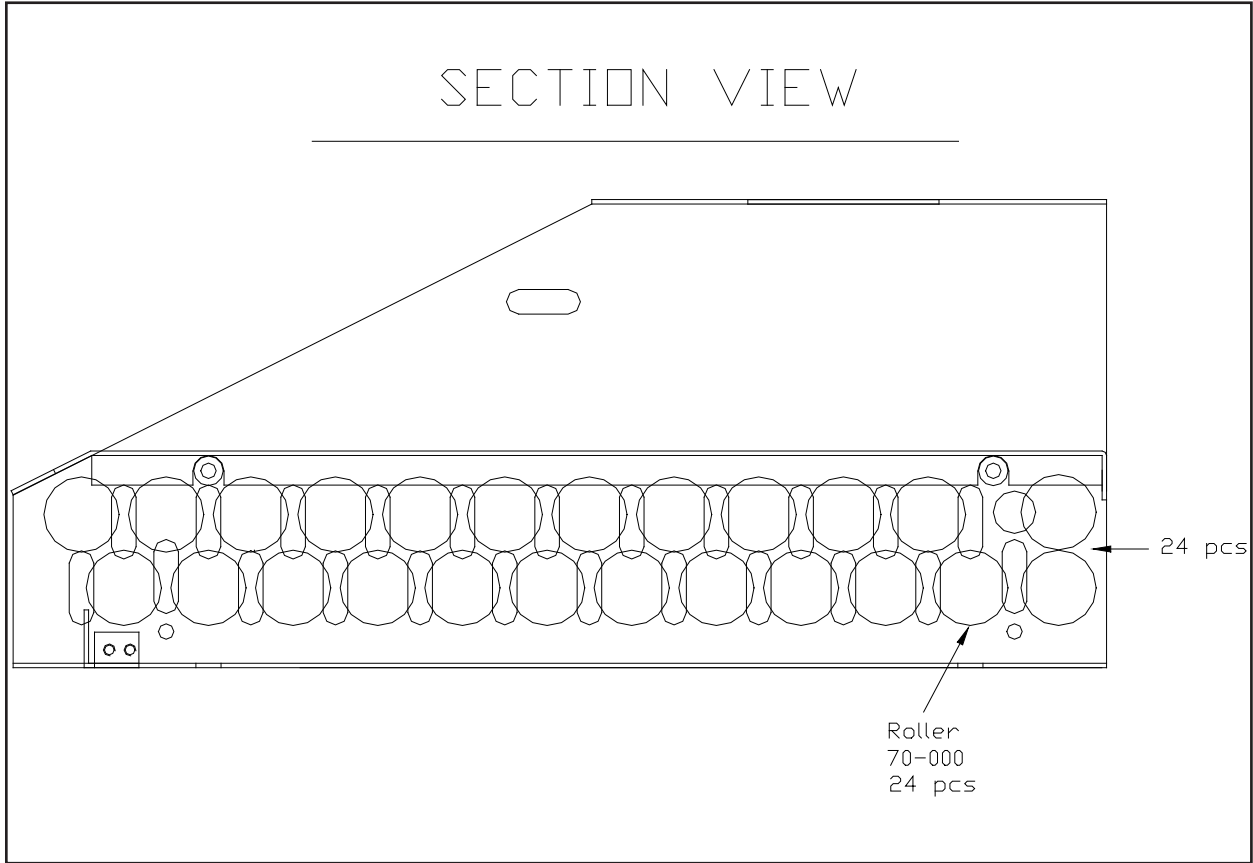
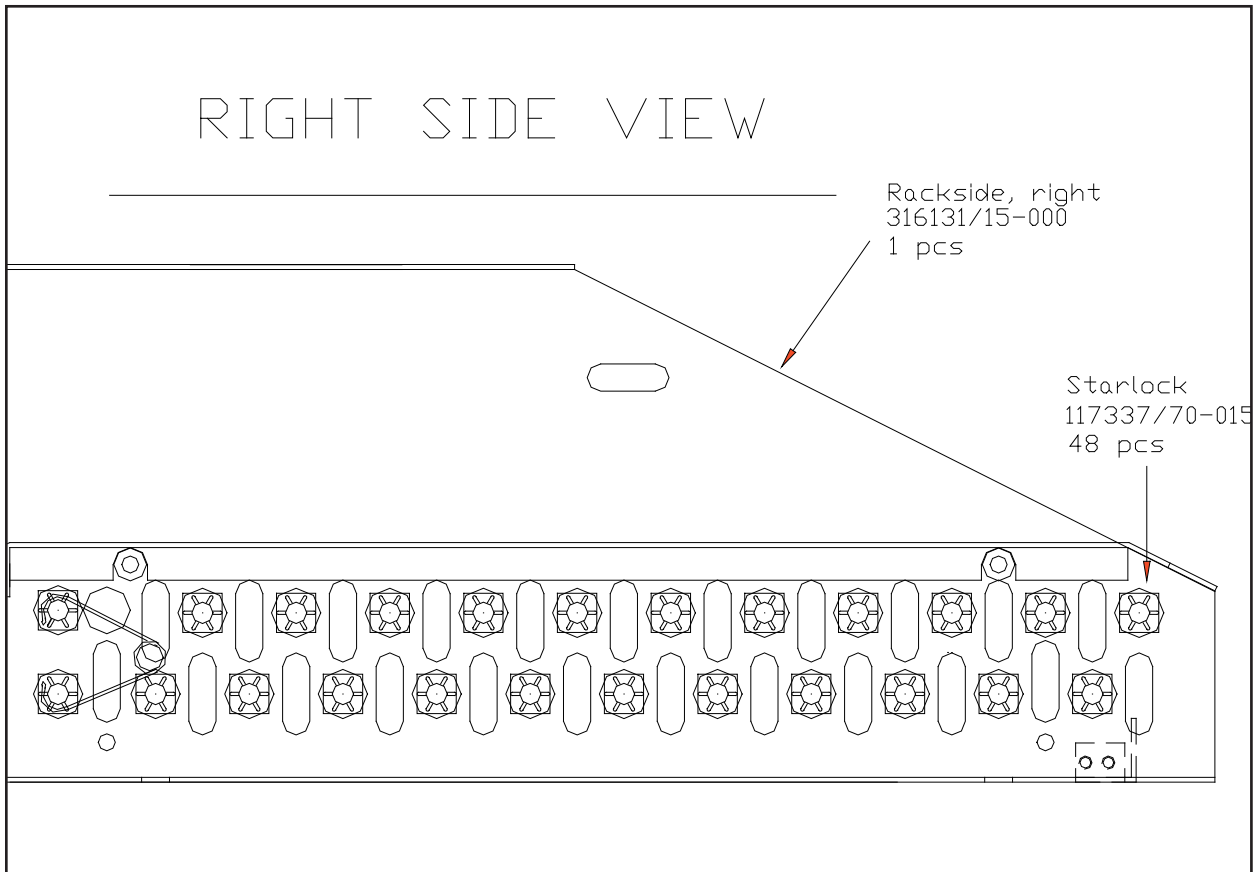
08-10-2002 15:55:05, A3, 1:2.19747 2

Gear Drawing Fix Right EG750/900



Dry R38 Rack Side Right, Drawing 316108

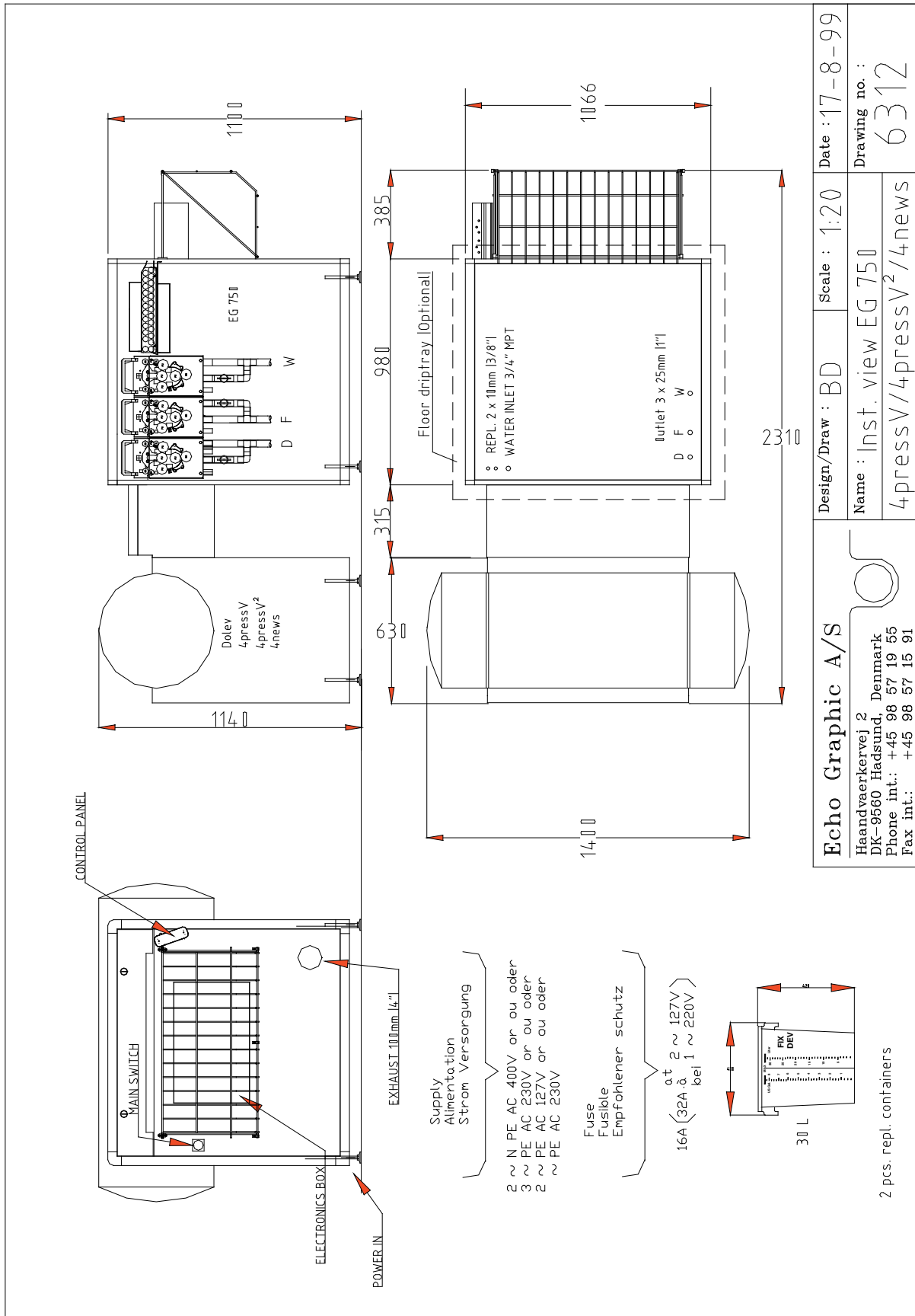
SECTION EIGHT: On-Line Description Creo Models



SECTION 8

Rack Side Section View Right/Left Dry R38, Drawing 316108

SECTION EIGHT: On-Line Description Creo Models

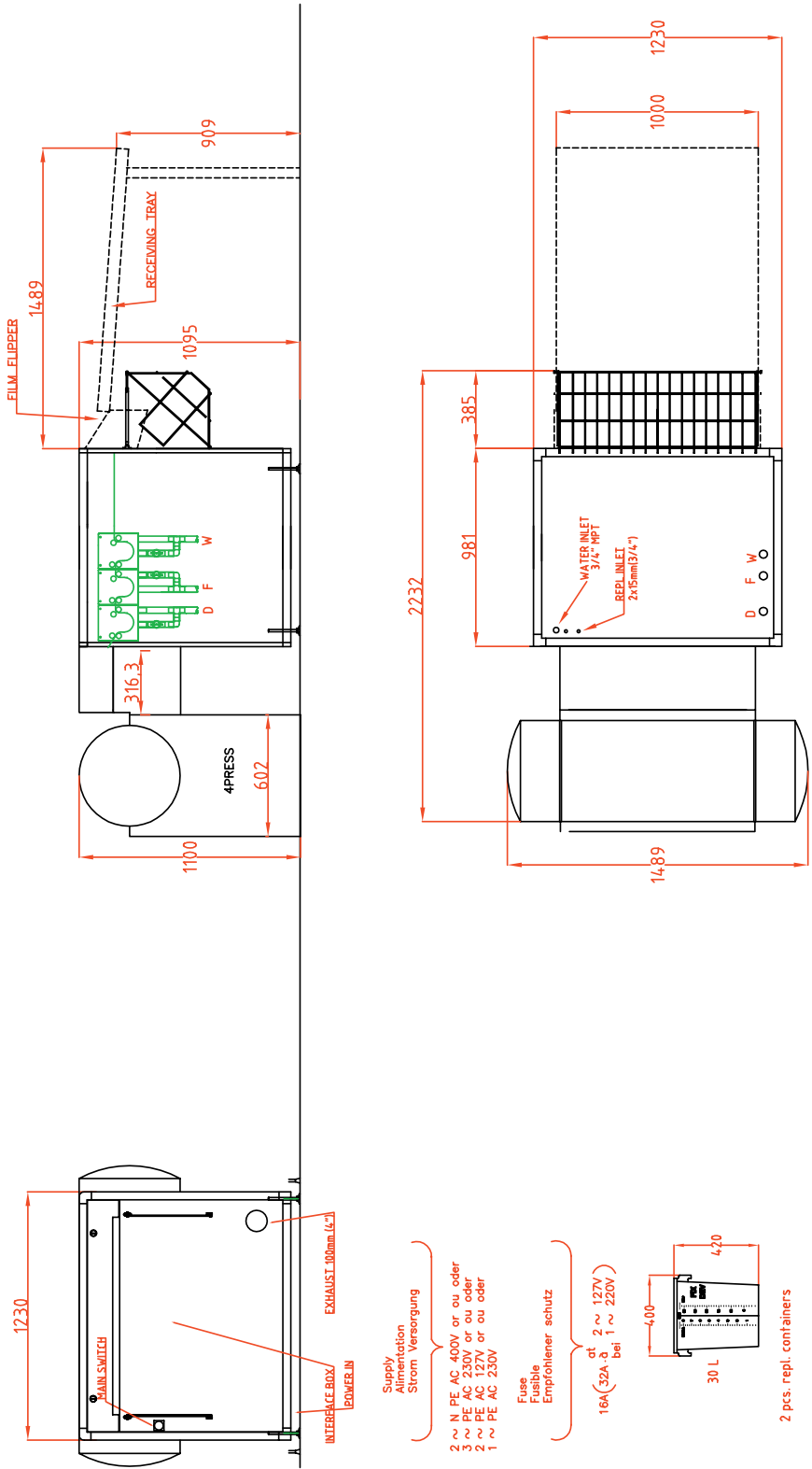


SECTION 8

Installationview 6312

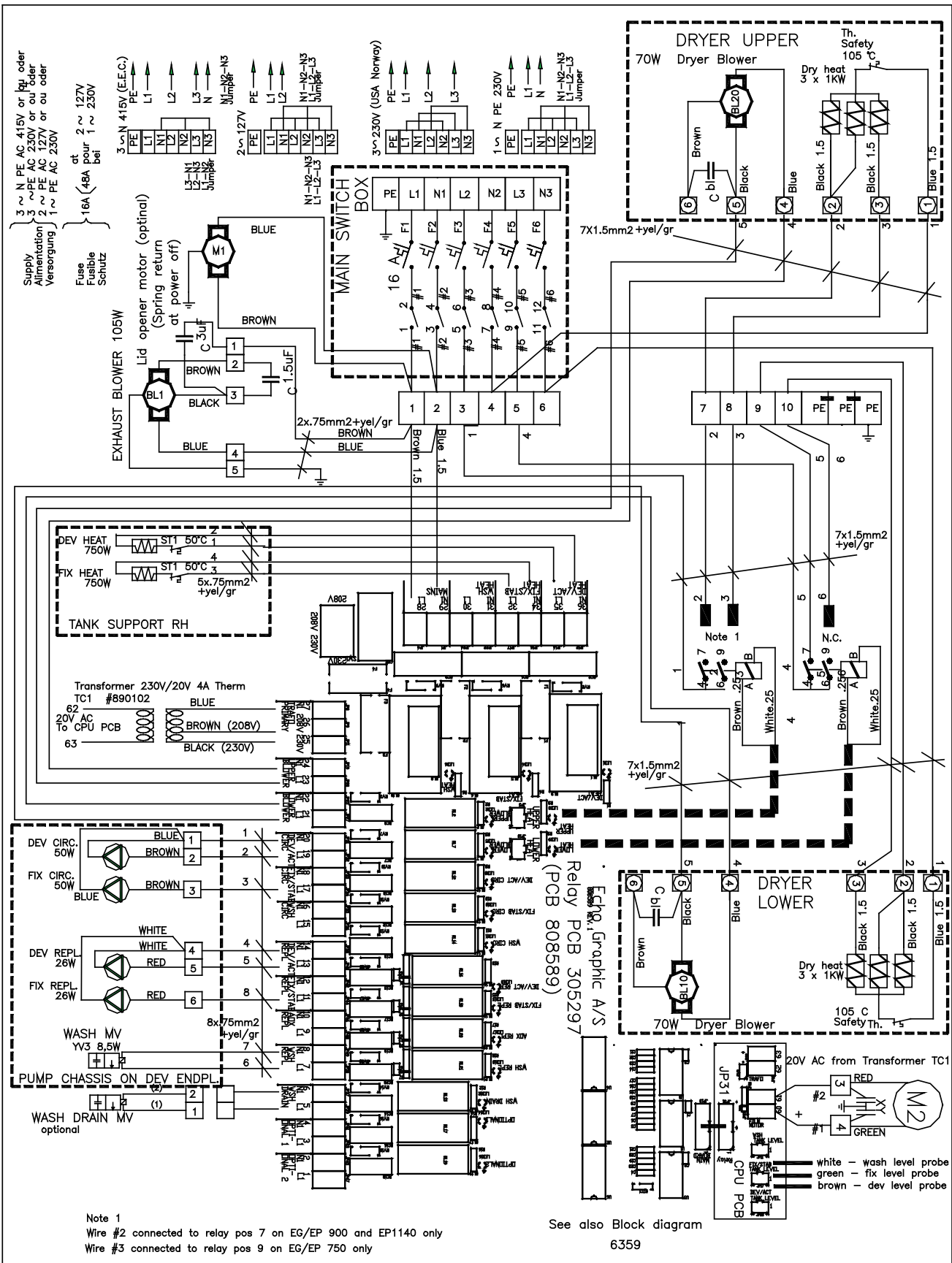
SECTION EIGHT: On-Line Description Creo Models

SECTION 8



Echo Graphic A/S		Design/Draw : CV	Scale : 1 : 30	Date : 20 -10 -02
Haandvaerkervej 2 DK-9560 Hadsund, Denmark Phone int.: +45 98 57 19 55 Fax int.: +45 98 57 15 91		Installation view EG900		
Name : Dolev 4PressXL		Drawing no. : 6371		

SECTION EIGHT: On-Line Description Creo Models



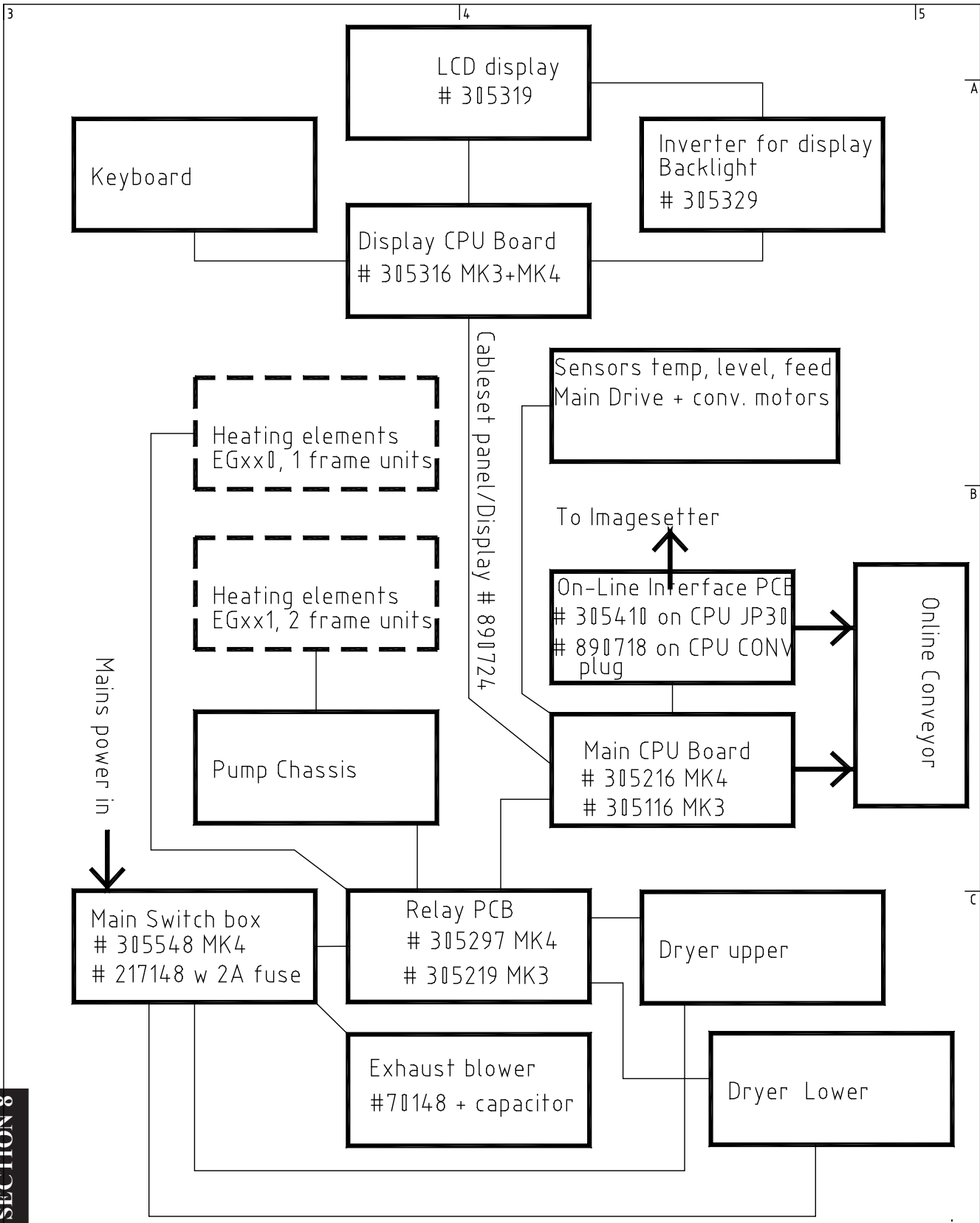
Note 1
 Wire #2 connected to relay pos 7 on EG/EP 900 and EP1140 only
 Wire #3 connected to relay pos 9 on EG/EP 750 only

See also Block diagram 6359

Echo Graphic A/S Haandvaerkervej 2 DK-9560 Hadsund, Denmark Phone int.: +45 98 57 19 55 Fax int.: +45 98 57 15 91	Design/Draw : CV Name: Interconn. diagram EG xx0	Scale : : Date : 10-01-02 Drawing no. : 6355 D	
--	--	--	--

SECTION 8

SECTION EIGHT: On-Line Description Creo Models



SECTION 8

Echo Graphic A/S Haandvaerkervej 2 DK-9560 Hadsund, Denmark Phone int.: +45 98 57 19 55 Fax int.: +45 98 57 15 91	Design/Draw : CV	Scale : :	Date : 10-01-02
	Name Block diagr.EG MK4		Drawing no. : 6359

Hope / Carnfeldt On-Line Processor for Creo imagesetters:

	EG 750 Dolev 250/450 4press/4news	EG 751 Dolev 450 4press/4news	EG 752 4press/4news	EGP 751 4press/4news
Dimensions of on-line system				
Length	228 cm / 89.9"	252 cm / 99.2"	252 cm / 99.2"	313 cm / 123.2"
Width	Dolev 250/450: 115 cm / 45.3"	Dolev 250/450: 115 cm / 45.3"	140 cm / 55.1"	140 cm / 55.1"
	4press/4news: 140 cm / 55.1"	4press/4news: 140 cm / 55.1"		
Height	110 cm / 43.3"	110 cm / 43.3"	110 cm / 43.3"	110 cm / 43.3"
Shipping dimensions				
Length	156 cm / 61.4"	156 cm / 61.4"	156 cm / 61.4"	228 cm / 89.8"
Width	115 cm / 45.3"	115 cm / 45.3"	115 cm / 45.3"	120 cm / 47.2"
Height	129 cm / 50.8"	129 cm / 50.8"	129 cm / 50.8"	129 cm / 50.8"
Weight				
Net	233 kg / 514 lb.	345 kg / 761 lb	345 kg / 761 lb	530 kg / 1168 lb.
Gross	315 kg / 695 lb.	450 kg / 992 lb.	450 kg / 992 lb.	650 kg / 1433 lb.
Specifications				
Inlet width	75 cm / 29.5"	75 cm / 29.5"	75 cm / 29.5"	75 cm / 29.5"
Tank capacity – film section	25 l / 6.6 US gal.	26.5 l/7. US gal.	35 l/9.3 US gal.	26.5 l/7.0 US gal.
plate section				13.5 l/4.2 US gal.
Rack length dev.	32 cm / 12.6"	44 cm / 17.3"	67 cm / 26.4"	44 cm/17.3"
Rack length act.				20 cm/7.9"
Developing time min.-max.	20-80 sec.	15-90 sec.	15-60 sec	15-90 sec.
Speed at 30 sec. dev. time	64 cm/min 25.2"/min.	88 cm/min. 34.6"/min.	134 cm/min. 52.8"/min	88 cm/min. 34.6"/min.
Speed at 20 sec. dev. time				60 cm/min. 23.6"/min.
Max. film length off-line	5 m / 16.4 ft.	10 m/32.8 ft	10 m/32.8 ft	10 m/32.8 ft
Min. film size off-line	18x10 cm/7 x 4"	18x10 cm/7 x 4"	18x10 cm/7 x 4"	21x29 cm/8.3x11.4"
Max. format	Set by imagesetter	Set by imagesetter	Set by imagesetter	Set by imagesetter
Dev./fix./wash temperature range	20-45°C/68-113°F	20-45°C/68-113°F	20-45°C/68-113°F	20-45°C/68-113°F
Exhaust blower	Built in	Built in	Built in	Built in
Exhaust connection	Ø 10 cm/4"	Ø 10 cm/4"	Ø 10 cm/4"	Ø 10 cm/3.9"
Circulation rate dev. and fix.	10 l/min. 2.7 US gal.	22 l/min. 5.8 US gal.	22 l/min. 5.8 US gal.	22 l/min. 5.8 US gal.
Circulation rate act. and stab				10 l/min./2.7 US gal.
Water consumption (operate)	3.5 l/min. 0.9 US gal.	3.5 l/min. 0.9 US gal.	3.5 l/min. 0.9 US gal.	3.5 l/min. 0.9 US gal.
Emission of heat to room (operate)	2000 W	2300W	2300W	3000 W
Water connection	¾" MPT	¾" MPT	¾" MPT	¾" MPT
Drain connection	3x1" hose nipple	3x1" hose nipple	3x1" hose nipple	6 x 1" hose nipple
Replenishment containers	2 x 30l / 8US gal.	2 x 30l / 8 US gal.	2 x 30l / 8 US gal.	4 x 30 l/8 US gal.
Max. power consumption	3700 VA	5900VA	5900VA	9400 VA
Average power consumption:				
Operate	3100 W	5000W	5000W	6200 W
Power save	600 W	1000W	1000W	3500 W
Night mode	550 W	600W	600W	1100 W
Power supply:				
1x230ACV+/-10% / 50/60Hz	20 amp	30 amp	30 amp	40 amp
3x230ACV+/-10% / 50/60Hz	-	3 x 16 amp	3x16 amp	3 x 16 amp

Technical specifications

