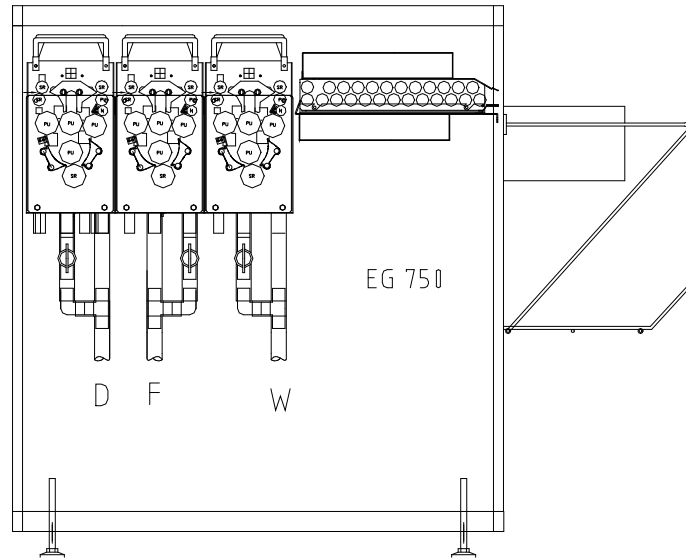


**Important**

**Your off-line processor has a built in exhaust blower. Even if the main switch is switched off, the blower will still be on. This is to remove chemical fumes from the processor and installation site. If a timer is connected in series with the main power cable, the processor has to be modified, so that the exhaust blower is always running.**



**Hope / Carnfeldt EG 750 Off-Line**

**8.1 General**

This section contains the processor's basic operating instructions for working on/off-line.

*Before operating the processor, the procedures in section three Installation must be performed. Read this entire section and section four (Operation) before attempting to operate the processor.*

# Contents

8.1 General.....	89
8.2 Off-Line Processing .....	91
R2 Gearwheel Position Left Side, Drawing 316489a .....	93
R2 Roller Position Right, Drawing 316489b .....	93
R2 Rack Side Right, Drawing 316489c .....	95
Rack Side Right Dry R38, Drawing 316108 .....	95
Rack Side Section View Right/Left Dry R38, Drawing 316108 .....	97
Installationview 6341 .....	97
Technical Specifications.....	98

Edition: 26 March 2002

Product numbers:

**316810**

**316850**

## 8.2 Off-Line Processing

When using your Hope/Carnfeldt processor as off-line processor please observe the following symbols on the panel:



Ready for off-line feed



Off-line feed. (A film is under the inlet sensor).

For setting up the processor in general please revert to section 4.9 Panel Operations.

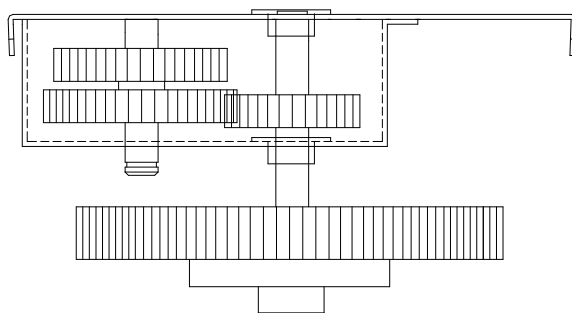
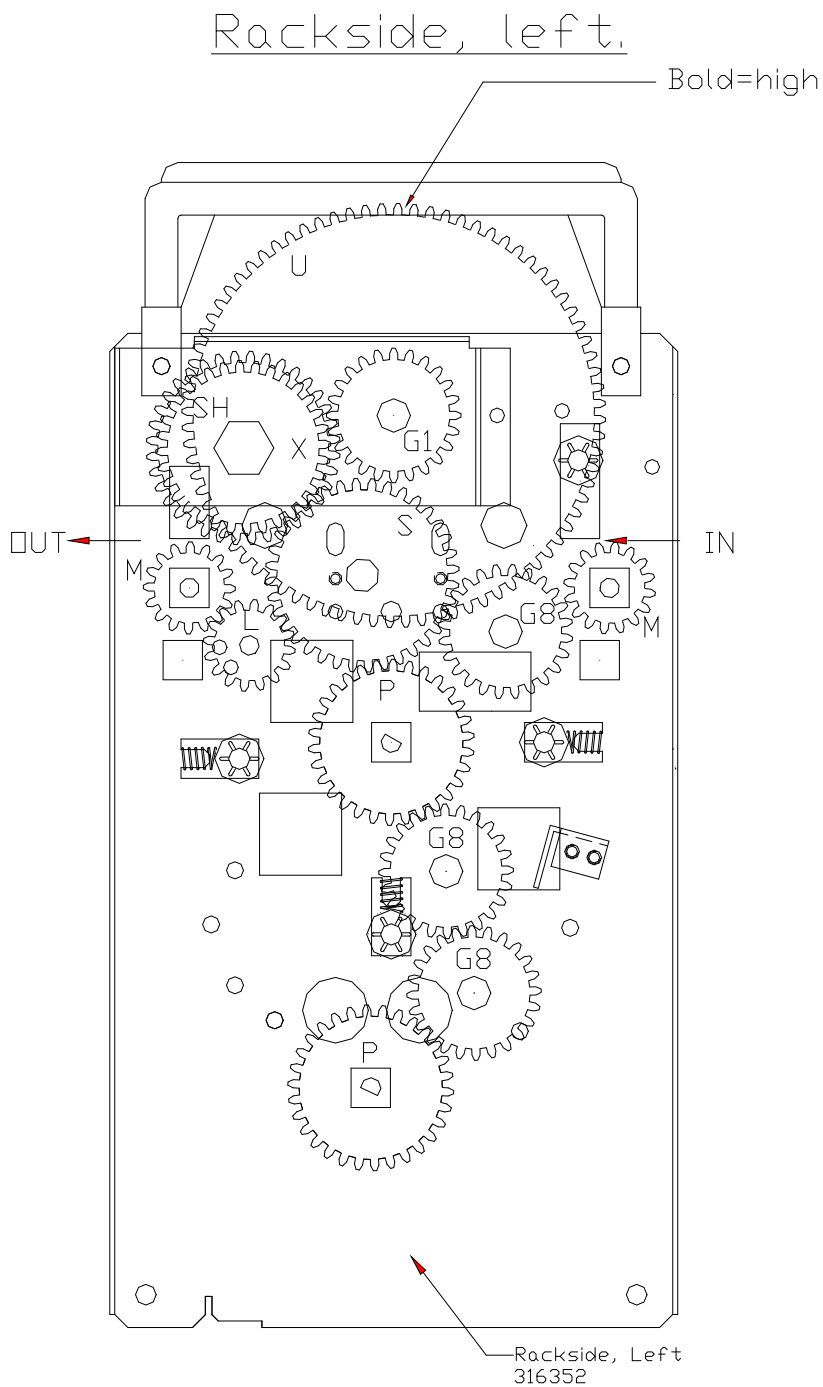
### Using the Processor Off-Line

When inserting film please ensure that the film is centred. An arrow indicates the centre of the processor.

### Using the Receiving Table

The receiving table can be adjusted the fit different film types. Adjustment will ensure the correct bending of the film by outlet.

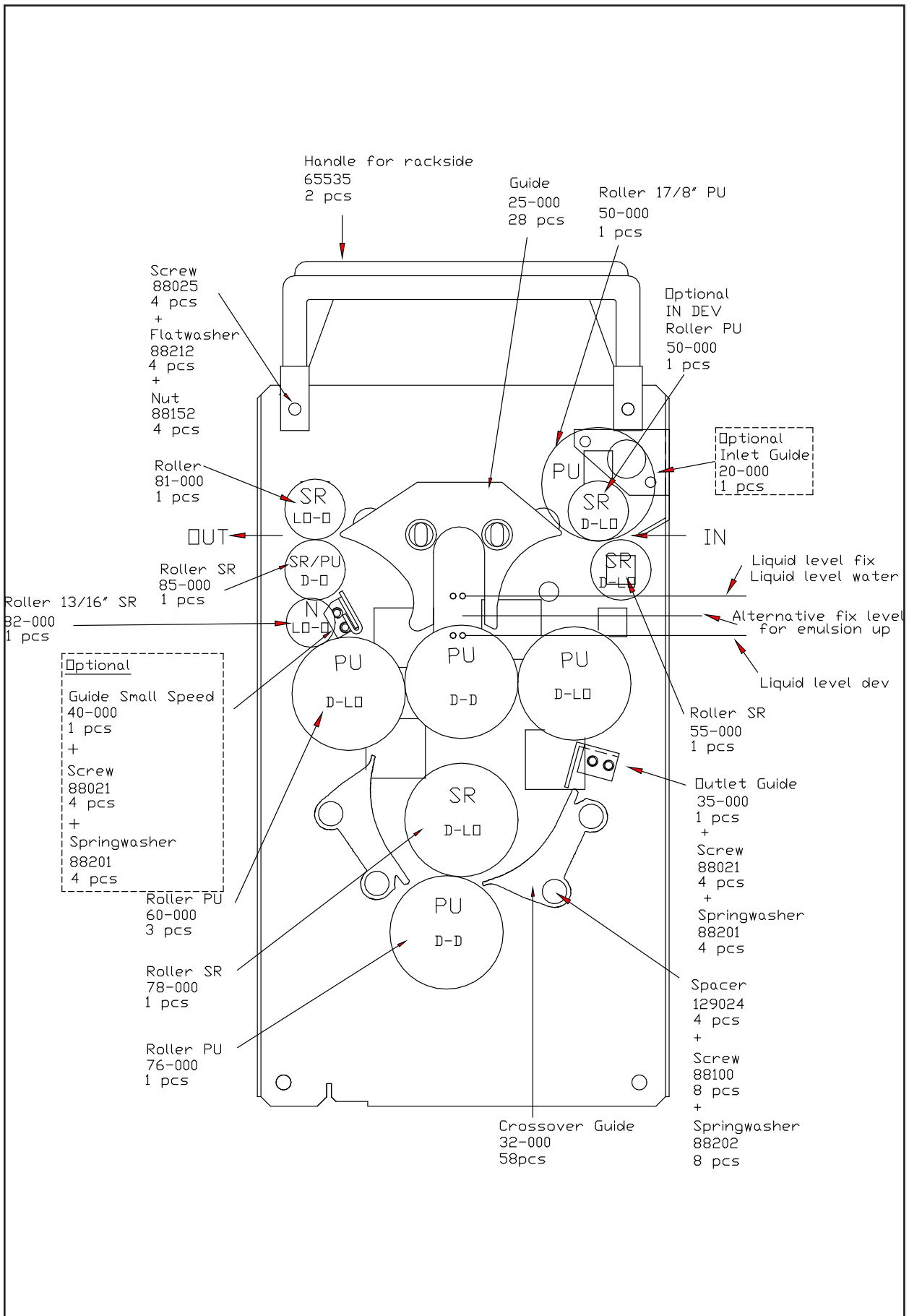
**SECTION EIGHT: Off-Line Description**



**SECTION 8**

R2 Gearwheel Position Left Side, Drawing 316489a

# SECTION EIGHT: Off-Line Description

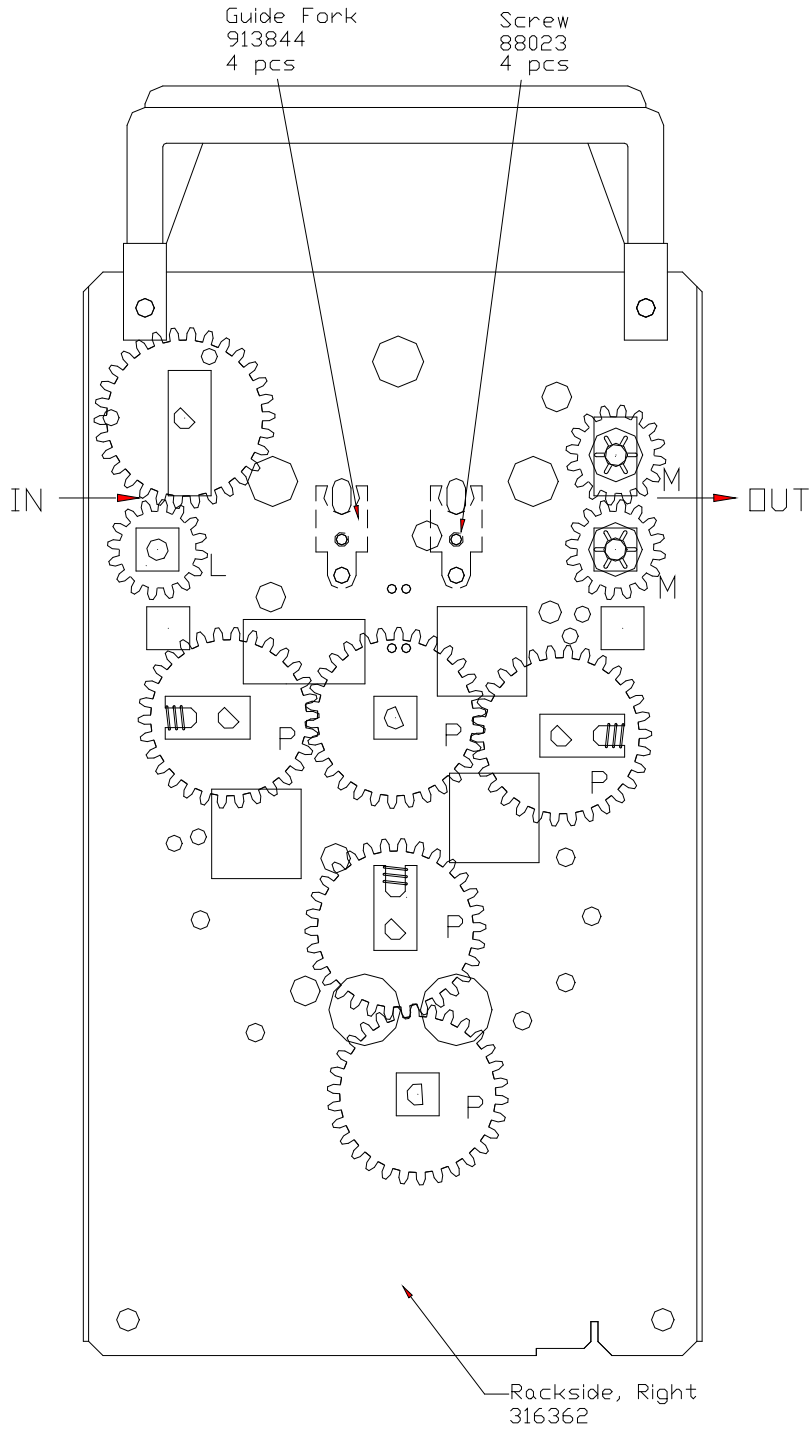


SECTION 8

R2 Roller Position Right, Drawing 316489b

**SECTION EIGHT: Off-Line Description**

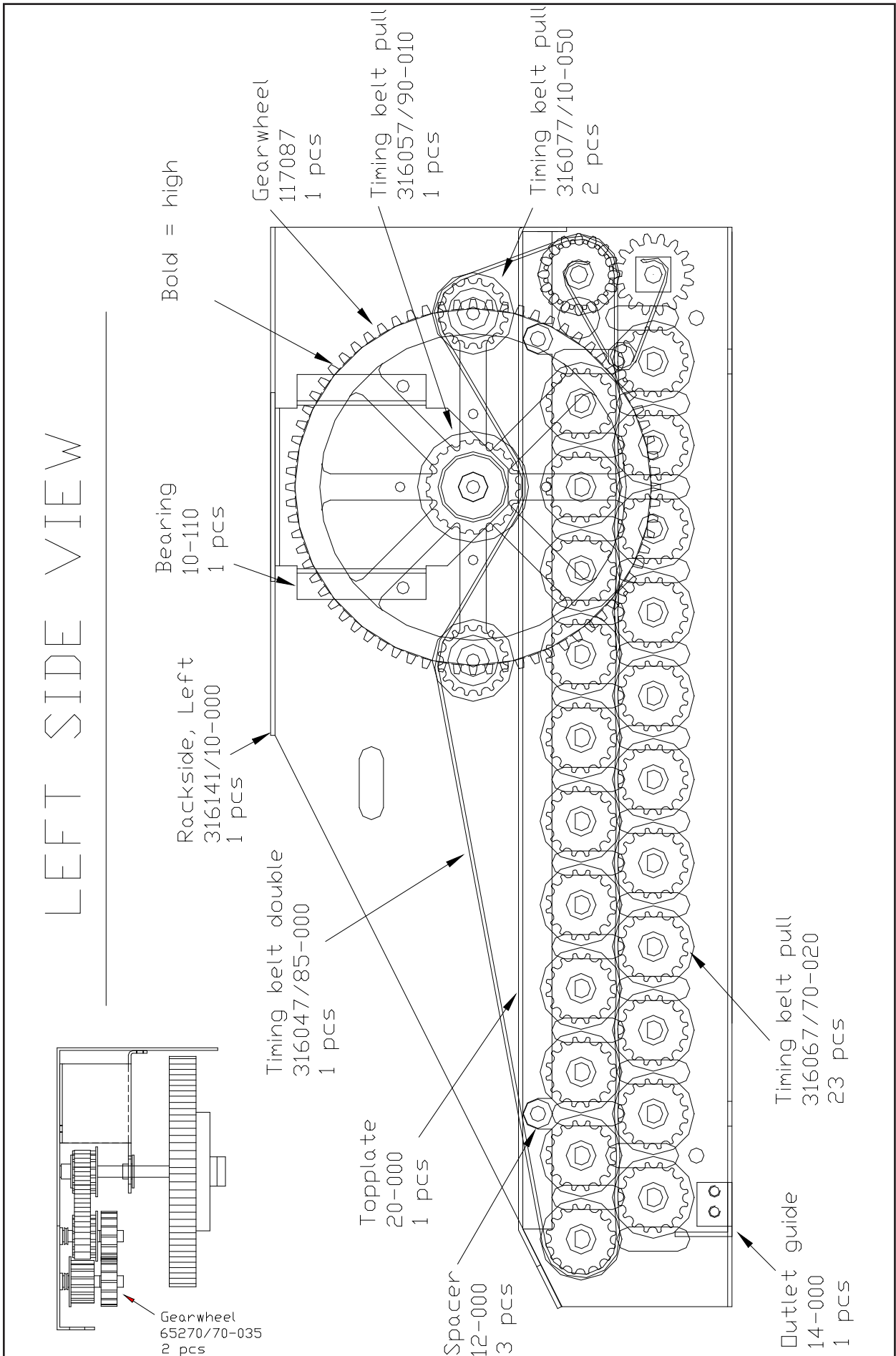
Rackside, right.



L	65271	16T Ø 1/4"	2 pcs
M	65270	16T D 1/4"	4 pcs
G1	276154	24T Ø 10,2	1 pcs
G8	217164	24T Ø 10,2	3 pcs
P	65266	30T 1/4" In - D	7 pcs
X	117528	32T NV 16	1 pcs
SH	117518	32T NV 16	1 pcs
S	65502	36T Ø 10mm MSH	1 pcs
U	65456	80T Ø 10mm MSH	1 pcs

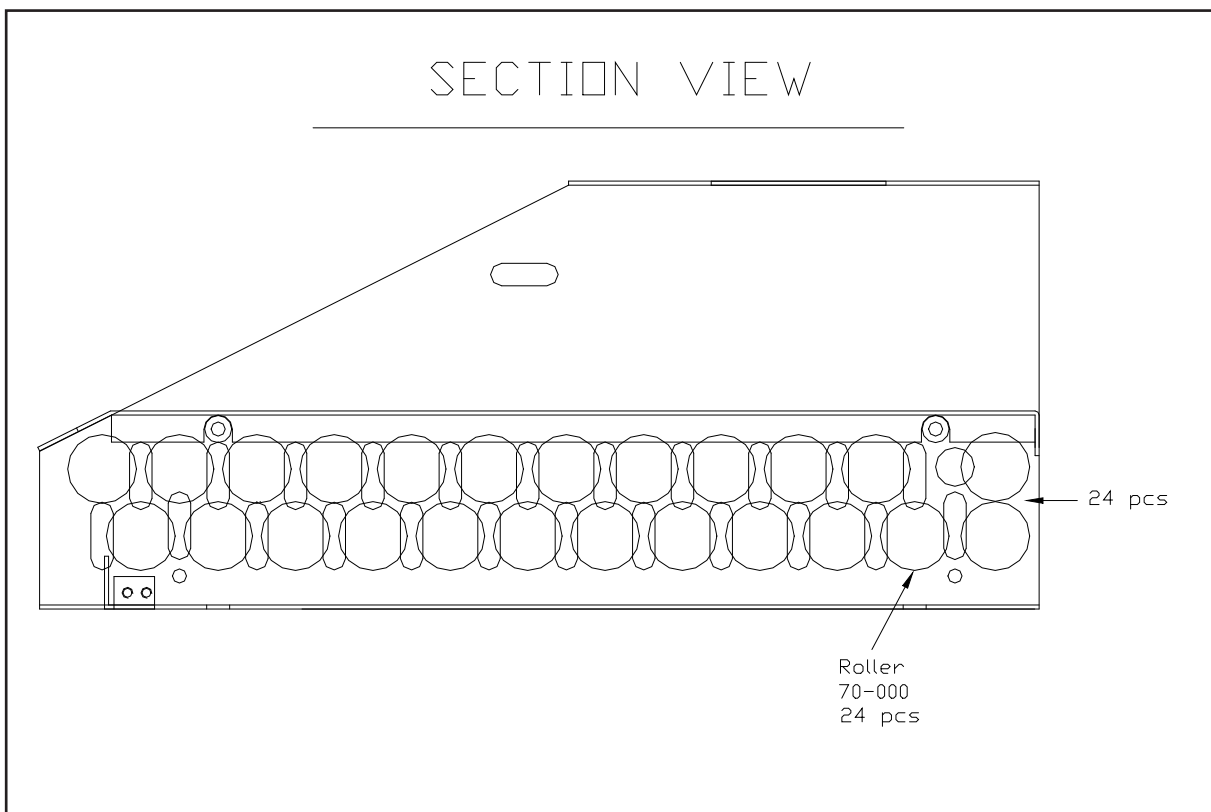
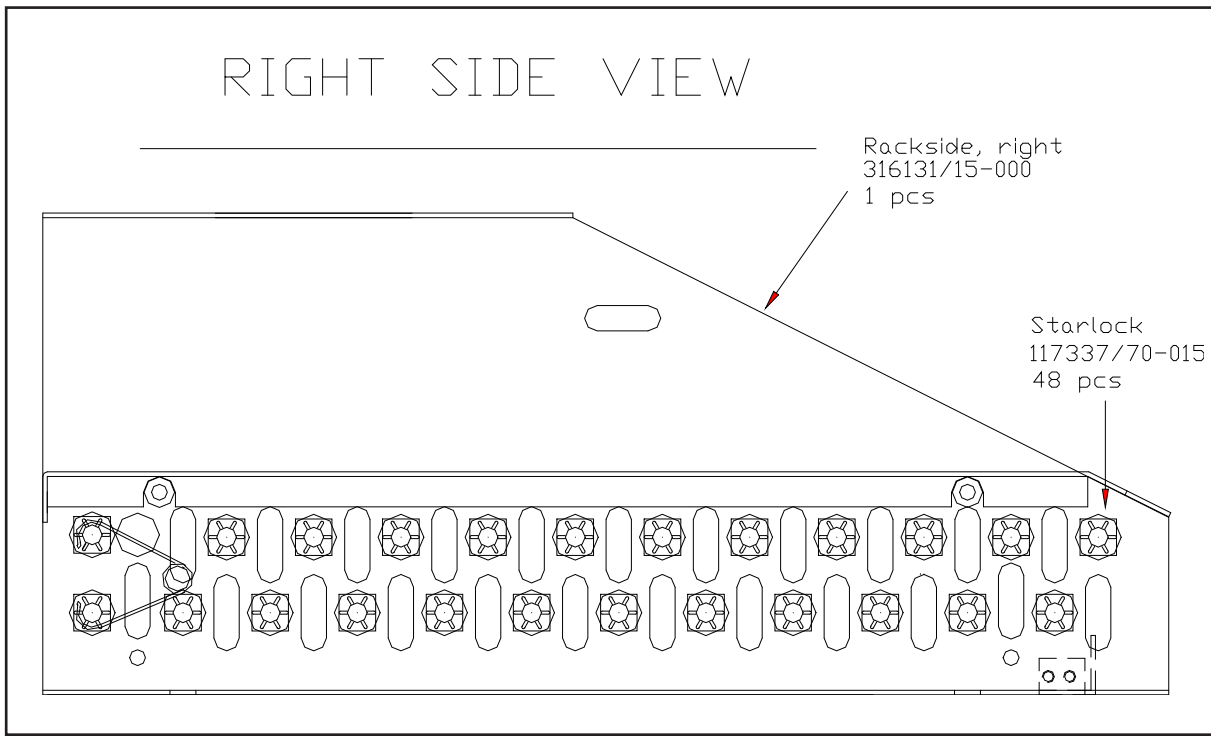
SECTION 8

R2 Rack Side Right, Drawing 316489c



Rack Side Right Dry R38, Drawing 316108

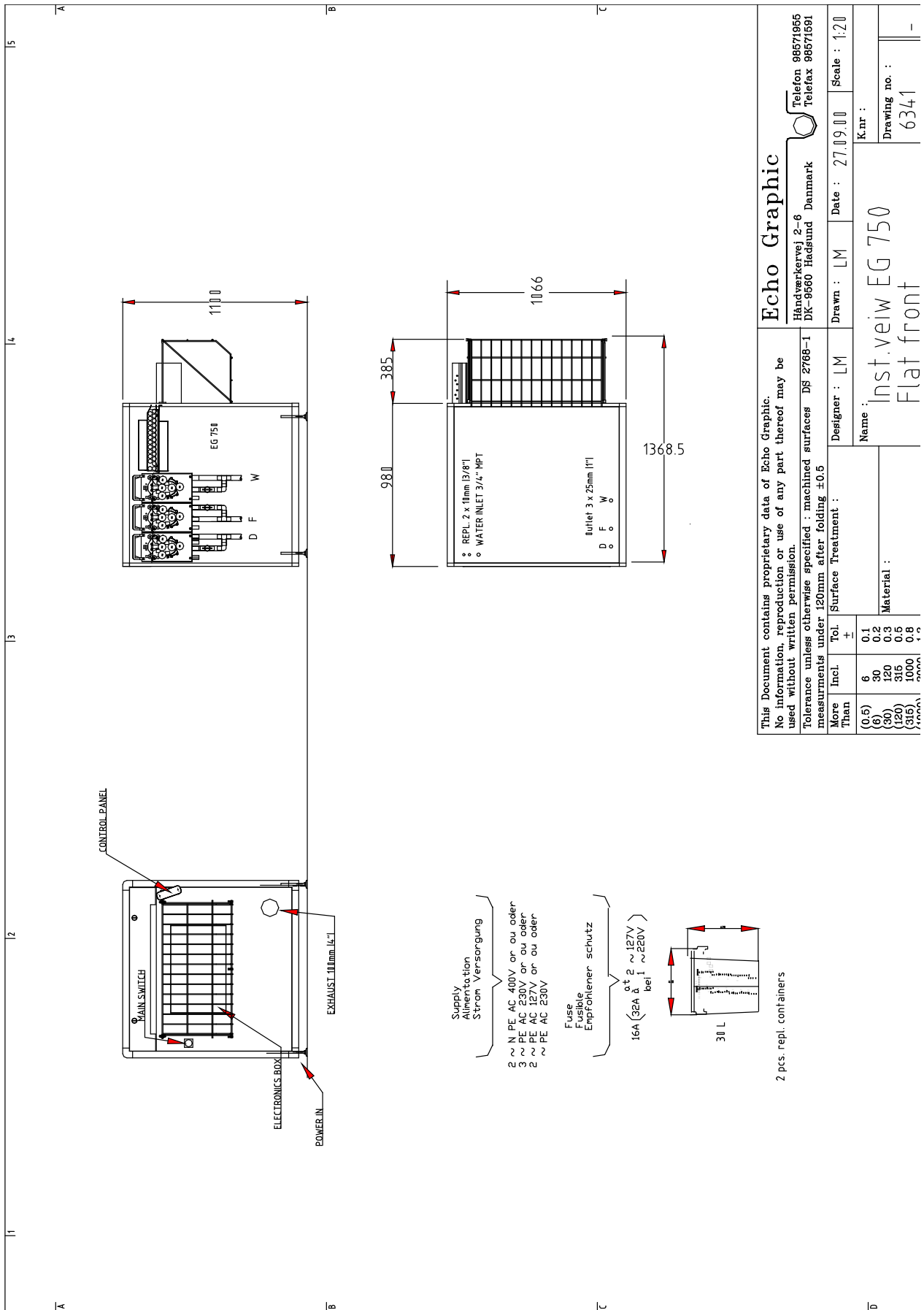
**SECTION EIGHT: Off-Line Description**



**SECTION 8**

Rack Side Section View Right/Left Dry R38, Drawing 316108

# SECTION EIGHT: Off-Line Description



This Document contains proprietary data of Echo Graphic.  
No information, reproduction or use of any part thereof may be used without written permission.  
Tolerance unless otherwise specified : machined surfaces DS 2768-1 measurements under 120mm after folding ±0.05

**Echo Graphic**  
Håndværkervej 2-6  
DK-9560 Hadsund Denmark  
Telefon 98571955  
Telefax 98571591

More Than	Incl.	Tol.	Surface Treatment :	Designer : LM	Date : 27.09.00	Scale : 1:20
(0.5)	6	±				
(6)	30	0.1				
(30)	120	0.2				
(120)	315	0.3				
(315)	1000	0.5				
(1000)		0.8				
(1000)		±0.05				

Name : Inst.veiw EG 750  
Material : Flat front  
K.n.r : 6341  
Drawing no. : -

Installationview 6341

## SECTION 8

## SECTION EIGHT: Off-Line Description

### Hope / Carnfeldt Off-Line Processors:

	EG 750 off-line	EG 751 off-line	EG 901 off-line
<b>Dimensions (incl. receiving basket)</b>			
Length	137 cm / 53.9"	158 cm / 62.2"	158 cm / 62.2"
Width	107 cm / 42.1"	107 cm / 42.1"	123 cm / 48.4"
Height	110 cm / 43.3"	110 cm / 43.3"	110 cm / 43.3"
<b>Shipping dimensions</b>			
Length	156 cm / 61.4"	156 cm / 61.4"	175 cm / 68.9"
Width	115 cm / 45.3"	115 cm / 45.3"	142 cm / 55.9"
Height	129 cm / 50.8"	129 cm / 50.8"	129 cm / 50.8"
<b>Weight</b>			
Net	218 kg / 514 lb.	274 kg / 761 lb.	395 kg / 871 lb.
Gross	300 kg / 695 lb.	450 kg / 992 lb.	520 kg / 1146 lb.
<b>Specifications</b>			
Inlet width	72 cm / 29"	75 cm / 29"	90 cm / 36"
Tank capacity	25 l / 6.6 US gal.	26.5 l / 7 US gal	29 l / 7.6 US gal.
Rack length dev.	32 cm / 12.6"	45 cm / 17.7"	45 cm / 17.7"
Developing time min.- max.	20-80 sec.	15 – 90 sec.	15 – 90 sec.
Speed at 30 sec. dev. time	64 cm/min 25.2"/min	88 cm/min 34.6"/min	88 cm/min. 34.6"/min
Material with min / max		10 - 72 cm / 3.9 – 28.3"	10-90 cm / 3.9 – 35.4"
Min. /max. film length off-line	15 - 75 cm / 5.9- 29.5"	15 - 600 cm / 5.9 – 236.2"	15 - 600 cm / 5.9 – 236.2"
Dev./fix./wash temperature range	20 - 45°C / 68 - 113°F	20 - 45°C / 68 - 113°F	20 - 45°C / 68 - 113°F
Dry temperature range	25 - 65 °C	25 - 65 °C	25 - 65 °C
Exhaust blower	Built in	Built in	Built in
Exhaust connection	Ø 10 cm/4"	Ø 10 cm / 4"	Ø 10 cm / 4"
Circulation rate dev., fix.	10 l/min. 2.7 US gal	15-20 l/min. 3.9-5.3 US gal	15-20 l/min. 3.9-5.3 US gal
Water consumption (operate)	3.5 l/min./0.9 US gal.	3.5 l/min./0.9 US gal.	3.5 l/min./ 0.9 US gal.
Emission of heat to room (operate)	2000W/586 BTU/hr	2000W/586 BTU/hr	2000 W/586 BTU/hr
Water connection	¾" pipe thread	¾" pipe thread	¾" pipe thread
Drain connection	3 x 1" hose nipple	3 x 1" hose nipple	3 x 1" hose nipple
Replenishment containers	Dev./fix. 30l/8 US gal.	Dev./fix. 30l/8 US gal.	Dev./fix. 30 l/8 US gal.
Max. power consumption	3700 VA	5900VA	5900 VA
<b>Average power consumption:</b>			
Operate	3100 W	5000W	5000 W
Power save	600 W	1000W	1000 W
Night mode	550 W	600 W	600 W
<b>Power supply:</b>			
1x230ACV+/-10% / 50/60Hz	20 amp	30 amp	30 amp
3x230ACV+/-10% / 50/60Hz	-	3 x 16 amp	3 x 16 amp