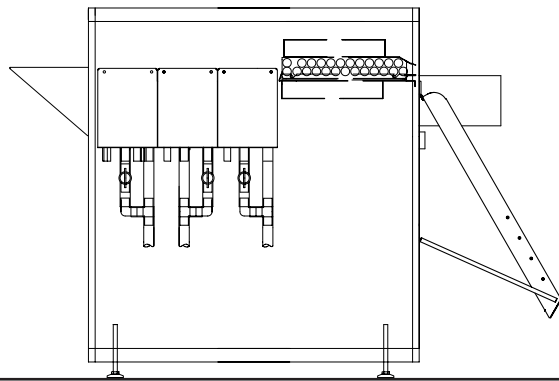


Service and Maintenance Manual English

Warning: For the use of qualified Service Personnel only

Important

Your on-line processor has a built in exhaust blower. If the main switch is switched off, the blower is disconnected and chemical fumes can damage conveyor/ imagesetter. Use the built in timer to control on/off/night mode of the processor to ensure that the exhaust blower is always running.



Hope / Carnfeldt EG 750 / EG900 PCB

8.1 General

This section contains the processor's basic operating instructions for working on/off-line.

Before operating the processor on-line, the procedures in section three Installation must be performed. Read this entire section and section four (Operation) before attempting to operate the processor.

Contents

8.1 General..... 89

8.2 Off-Line Processing 91

8.3 Rack Drawings Off-Line..... 92

R2 Gearwheel Position Left Side, Drawing 316519a 92

R2 Roller Position Right, Drawing 316519b 92

R2 Gearwheel Position Right Side, Drawing 316519c..... 94

Dry Rack R38 HTD Drive EG 750/900, Drawing 316108 95

Dry Rack R38 HTD Drive EG 750/900, Drawing 316108..... 96

Installationview 6382..... 97

Installationview 6383 98

Interconnection diagram 6372 99

Block diagram 6359 100

Technical Specifications 101

Partlist 102

Edition:27 Oct.2010

Product numbers:

316521/316522

320521/320522

8.2 Off-Line Processing

When using your Hope/Carnfeldt processor as off-line processor please observe the following symbols on the panel:



Ready for off-line feed



Off-line feed. (A film is under the inlet sensor).

For setting up the processor in general please revert to section 4.9 Panel Operations.

Using the Processor Off-Line

When inserting film please ensure that the film is centred. An arrow indicates the centre of the processor. See fig.



Using the Receiving Table

The angle of the receiving table can be adjusted the fit different film types. Correct adjustment will ensure the that the films are stacked properly.

Stop input on alarm

The Software can be adjusted so that the processor will not process any films if an alarm is active and Celis is unhappy



Here is a description how to activate the STOP INPUT ON ALARM function.:

Enter the service mode, see service manual paragraph 5.7 page 5-55

Press the key "MACH SETUP"

Press arrow key to left until you have "STOP INPUT ON ALARM" in the display

Use the arrow up key to enable the function.

Press the "out of door" key (lower left key)

Press "OUT+RESET" (lower left key)

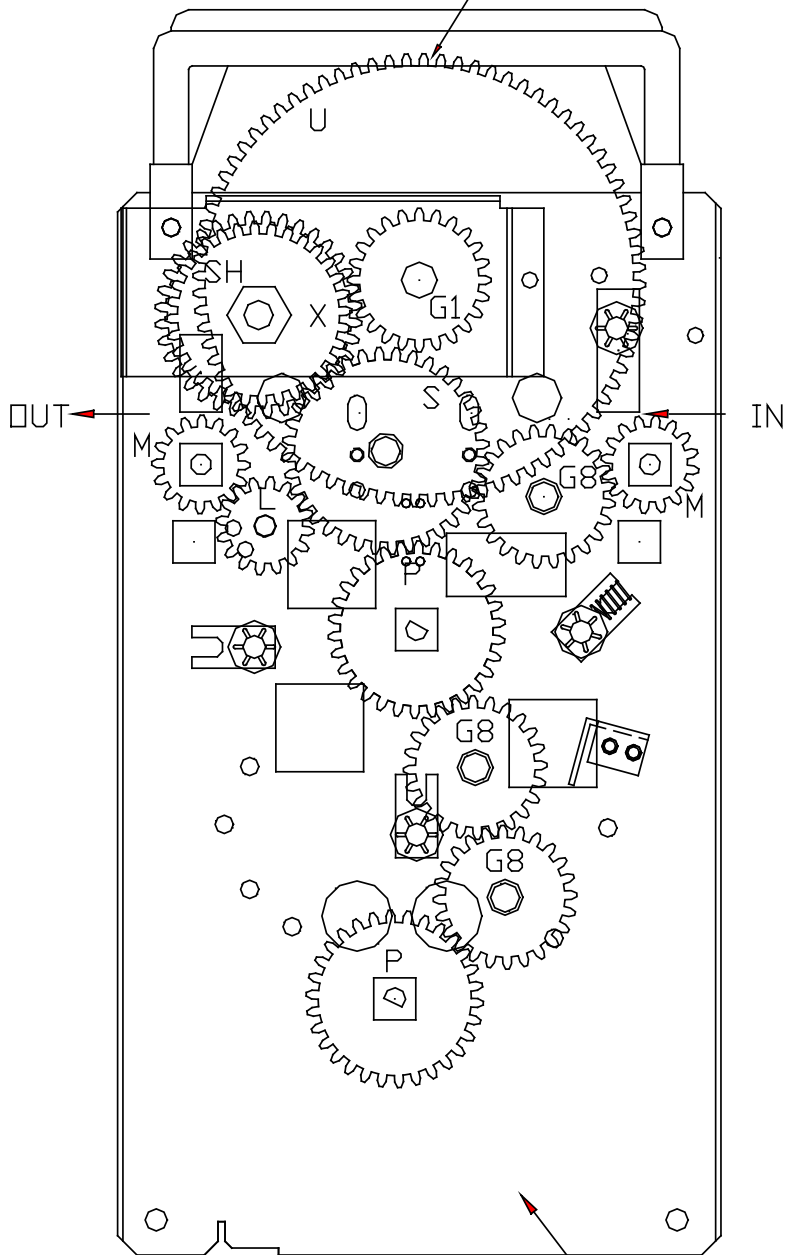
Now the motor will stop if a film is detected at the input sensor, and there is an alarm (unhappy)



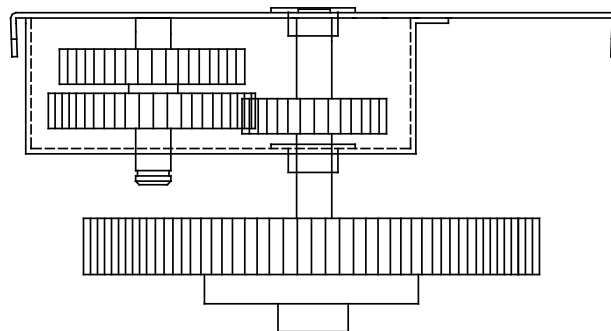
SECTION EIGHT: Off-Line Description Eastman Kodak Models

Rackside, left.

Bold=high



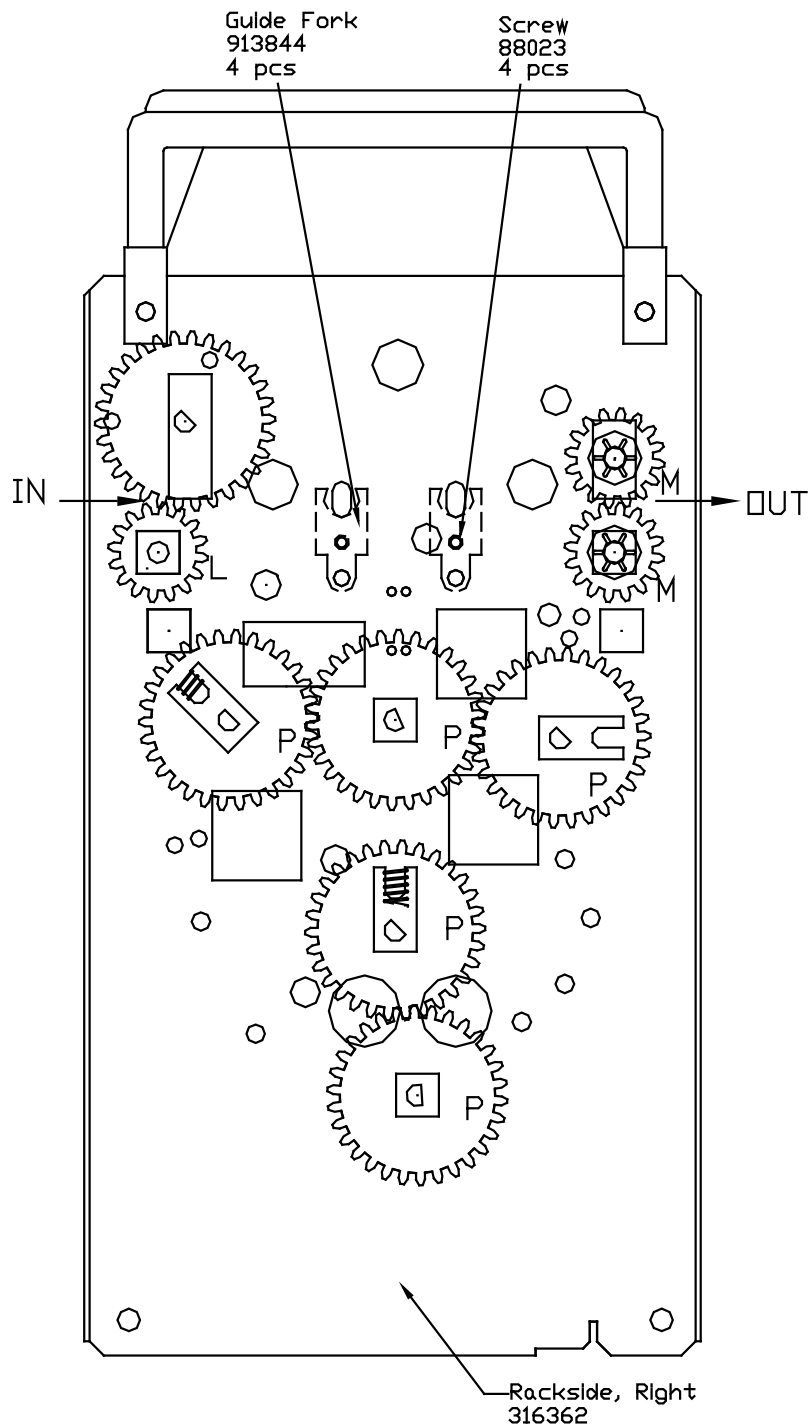
Rackside, Left
316352



SECTION 8

R2 Gearwheel Position Left Side, Drawing 316519a

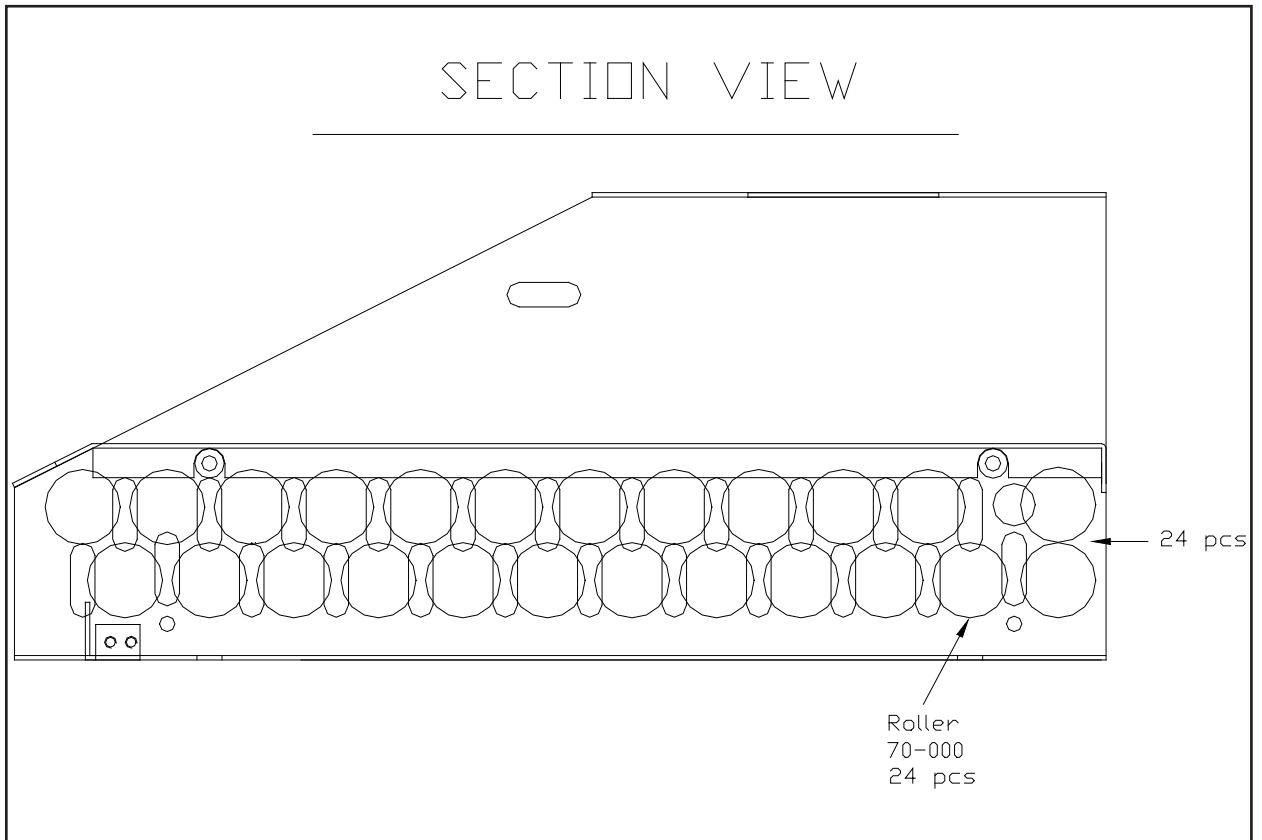
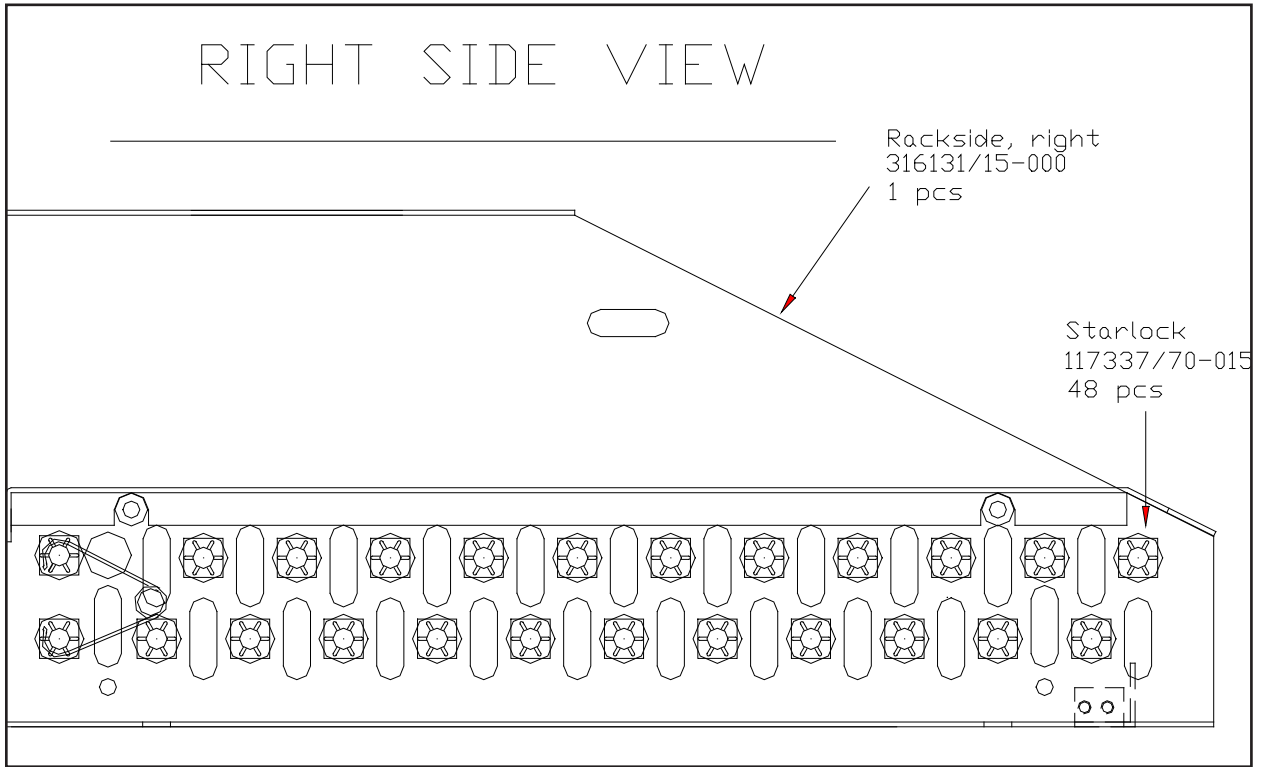
Rackside, right.



L	65271	16T Ø 1/4"	2 pcs
M	65270	16T D 1/4"	4 pcs
G1	276154	24T Ø 10,2	1 pcs
G8	217164	24T Ø 10,2	3 pcs
P	65266	30T 1/4" In - D	7 pcs
X	117528	32T NV 16	1 pcs
SH	117518	36T NV 16	1 pcs
S	65502	36T Ø 10mm MSH	1 pcs
U	65456	80T Ø 10mm MSH	1 pcs

R2 Gearwheel Position Right Side, Drawing 316519c

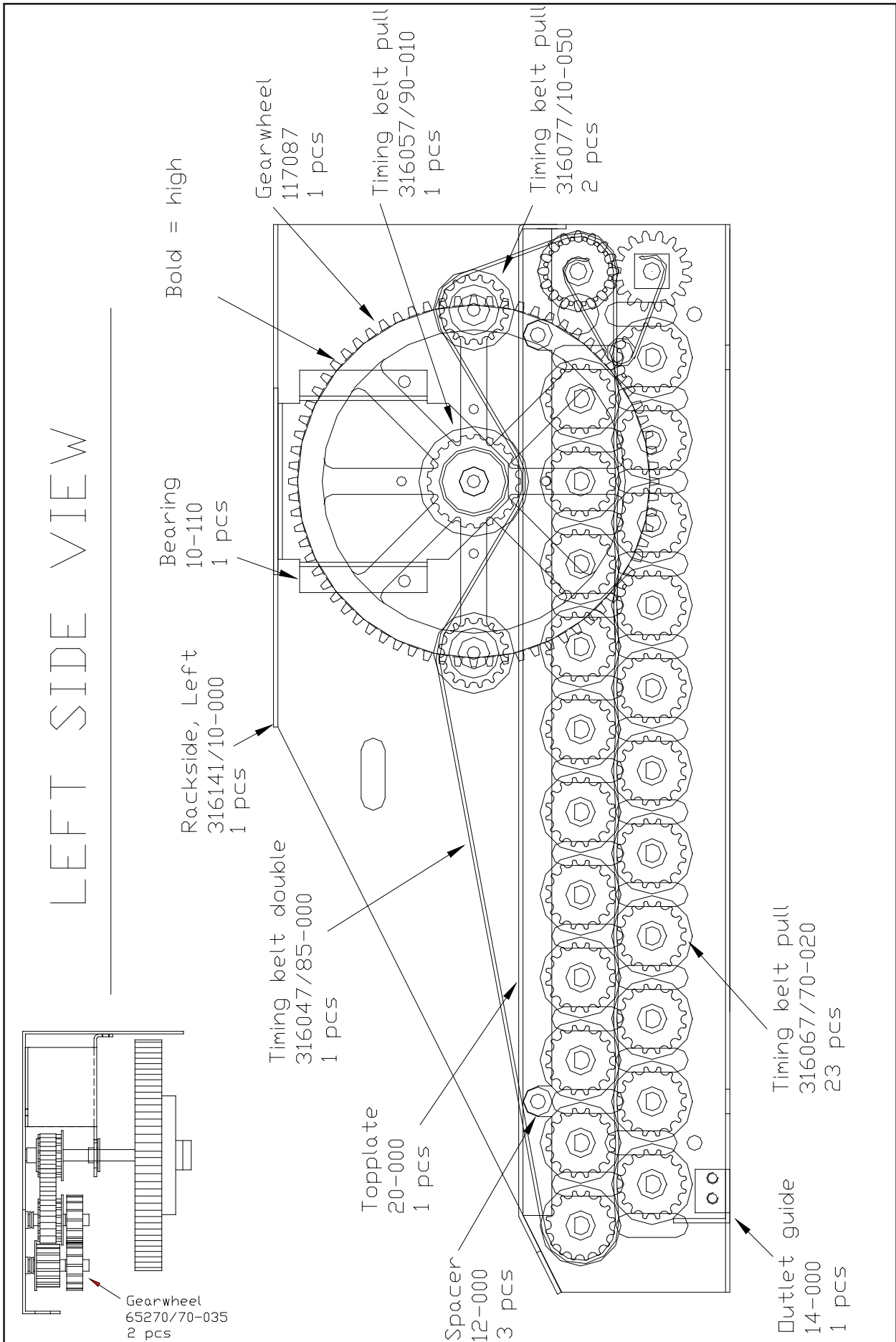
SECTION EIGHT: Off-Line Description Eastman Kodak Models



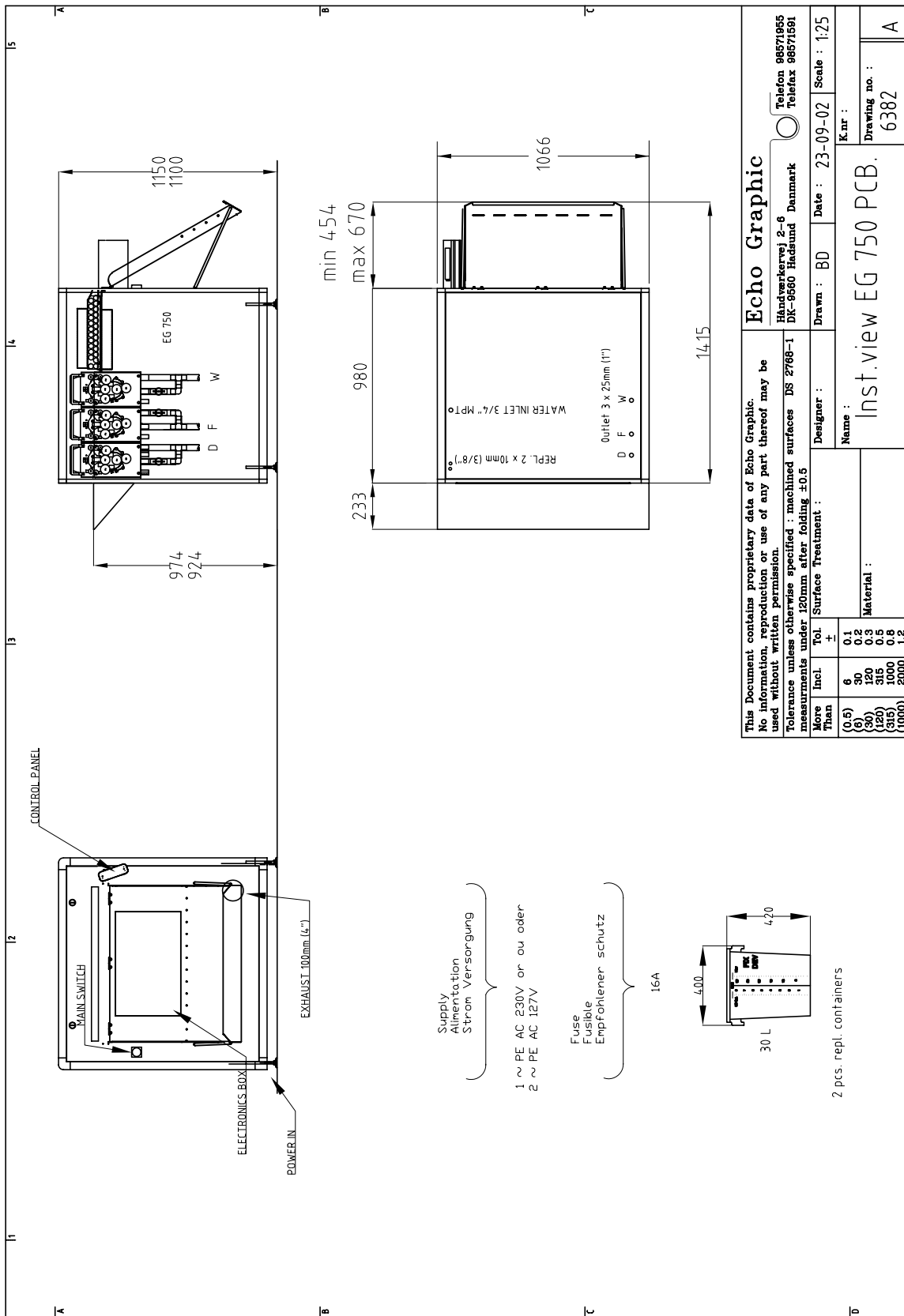
SECTION 8

Rack Side Section View Right/Left Dry R38, Drawing 316108

SECTION 8



Rack Side Right Dry R38, Drawing 316108



Echo Graphic
 Handværkervej 2-8
 DK-9560 Hadsund Denmark
 Telefon 98571955
 Telefax 98571591

This Document contains proprietary data of Echo Graphic.
 No information, reproduction or use of any part thereof may be used without written permission.
 Tolerance unless otherwise specified : machined surfaces DS 2768-1 measurements under 120mm after folding ±0.5

Surface Treatment :
 Designer :
 Date : 23-09-02
 Scale : 1:25

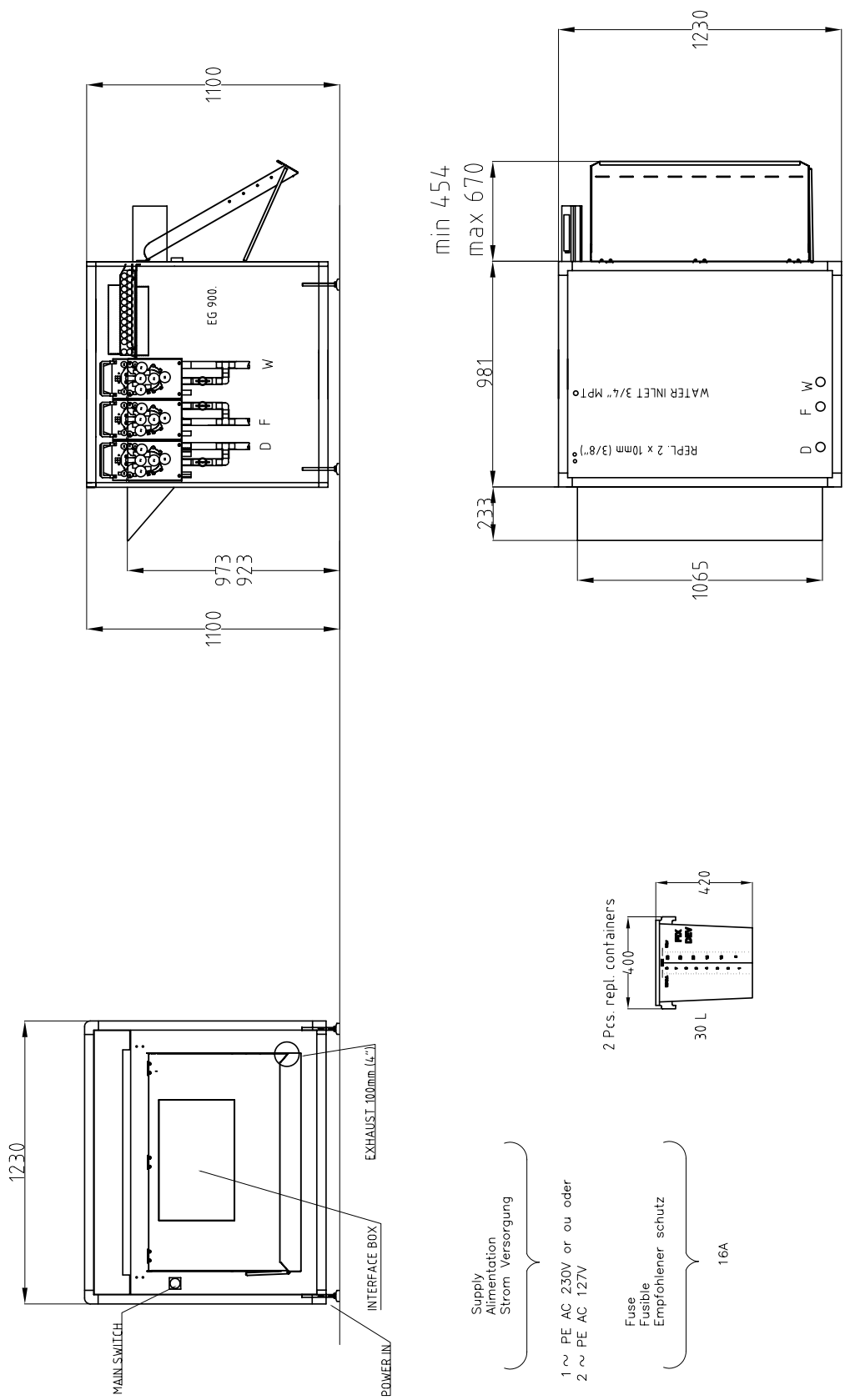
Name :
 Inst.view EG 750 PCB.

Konr :
 Drawing no. : 6382
 A

Installationview 6368

SECTION EIGHT: Off-Line Description Eastman Kodak Models

SECTION 8



Supply
Alimentation
Strom Versorgung

1 ~ PE AC 230V or ou oder
2 ~ PE AC 127V

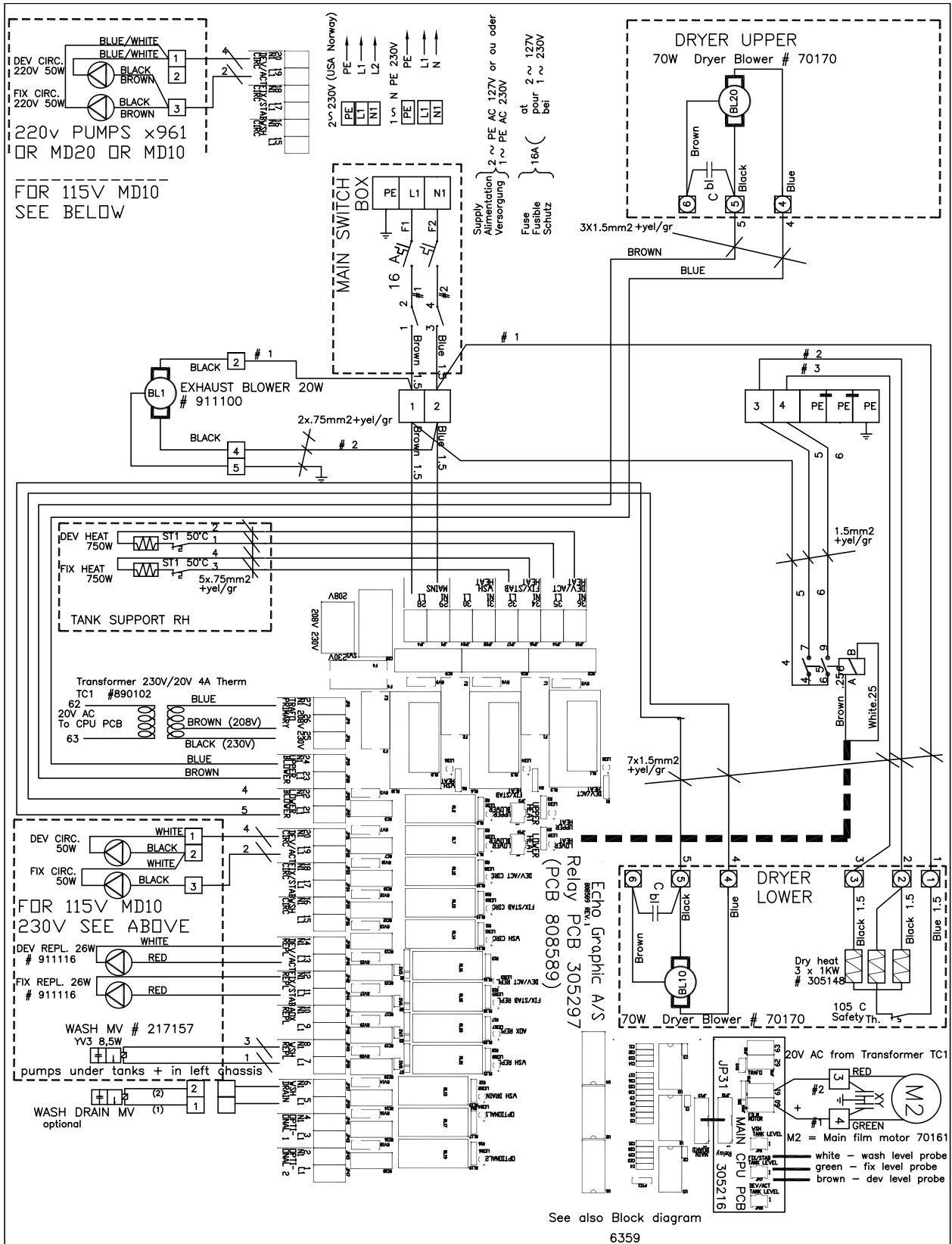
Fuse
Fusible
Empfohlener schutz

16A

Echo Graphic A/S		Design/Draw : CV	Scale : 1 : 25	Date : 23 - 06 - 04
Haandvaerkervej 2 DK-9560 Hadsund, Denmark Phone int.: +45 98 57 19 55 Fax int.: +45 98 57 15 91		Installation view EG 900		
Name :		Drawing no. : 6383 A		

Installationview 6369

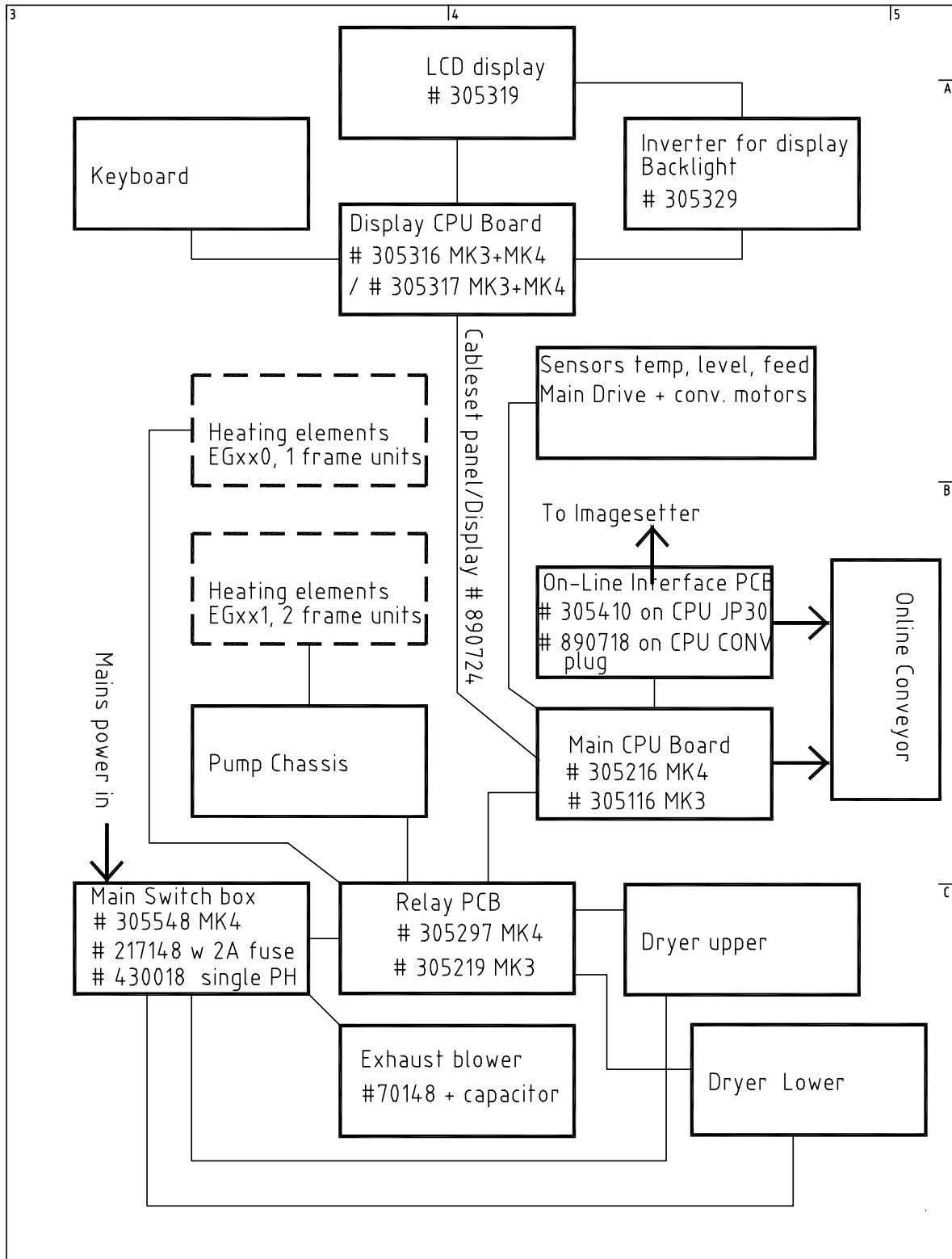
SECTION EIGHT: Off-Line Description Eastman Kodak Models



SECTION 8

Echo Graphic A/S	Design/Draw : CV	Scale : :	Date : 27-11-03	
Haandvaerkervej 2 DK-9560 Hadsund, Denmark Phone int.: +45 98 57 19 55 Fax int.: +45 98 57 15 91	Name: Interconn. diagram EG 750, EG900.		Drawing no. : 6372 A	

SECTION EIGHT: Off-Line Description Eastman Kodak Models



SECTION 8

Echo Graphic A/S Haandvaerkevej 2 DK-9560 Hadsund, Denmark Phone int.: +45 98 57 19 55 Fax int.: +45 98 57 15 91	Design/Draw : CV	Scale : :	Date : 10-01-02
	Name Block diagr.EG MK4	Drawing no. : 6359	-

Hope / Carnfeldt Off-Line Processors for Eastman Kodak:

	EG 750PCB.	EG 751PCB	EG 900PCB	EG 901PCB.
Dimensions (incl. receiving basket)				
Length	137 cm / 53.9"	158 cm / 62.2"	137 cm / 62.2"	158 cm / 62.2"
Width	107 cm / 42.1"	107 cm / 42.1"	123 cm / 48.4"	123 cm / 48.4"
Height	110 cm / 43.3"	110 cm / 43.3"	110 cm / 43.3"	110 cm / 43.3"
Shipping dimensions				
Length	167 cm / 65.7"	156 cm / 61.4"	145 cm / 58"	175 cm / 68.9"
Width	115 cm / 45.3"	115 cm / 45.3"	142 cm / 55.9"	142 cm / 55.9"
Height	129 cm / 50.8"	129 cm / 50.8"	129 cm / 50.8"	129 cm / 50.8"
Weight				
Net	218 kg / 514 lb.	274 kg / 761 lb.	300 kg / 661 lb.	395 kg / 871 lb.
Gross	300 kg / 695 lb.	450 kg / 992 lb.	420 kg / 926 lb.	520 kg / 1146 lb.
Specifications				
Inlet width	72 cm / 29"	75 cm / 29"	91 cm / 36"	91 cm / 36"
Tank capacity	25 l / 6.6 US gal.	26.5 l / 7 US gal	29 l / 7.6 US gal.	29 l / 7.6 US gal.
Rack length dev.	32 cm / 12.6"	45 cm / 17.7"	32 cm / 12.6"	45 cm / 17.7"
Developing time	20-80 sec.	15 - 90 sec.	20 - 80 sec.	15 - 90 sec.
min. - max. Speed at 30 sec. dev. time	64 cm/min	88 cm / min	64 cm/min.	88 cm/min.
Material with min / max	25.2"/min	34.6"/min	25.2"/min	34.6"/min
Min. /max. film length off-line	15 - 75 cm / 5.9-29.5"	15 - 600 cm / 5.9 - 236.2"	15 - 600 cm / 5.9 - 236.2"	15 - 600 cm / 5.9 - 236.2"
Dev./fix./wash temperature range	20 - 45°C / 68 - 113°F	20 - 45°C / 68 - 113°F	20 - 45°C / 68 - 113°F	20 - 45°C / 68 - 113°F
Dry temperature range	25 - 55 °C	25 - 65 °C	25 - 55 °C	25 - 65 °C
Exhaust blower	Built in	Built in	Built in	Built in
Exhaust connection	Ø 10 cm/4"	Ø 10 cm / 4"	Ø 10 cm / 4"	Ø 10 cm / 4"
Circulation rate dev., fix.	10 l/min.	15-20 l/min.	10 l/min.	15-20 l/min.
Water consumption	2.7 US gal	3.9-5.3 US gal	3.9-5.3 US gal	3.9-5.3 US gal
Max (operate) Emission of heat to room (operate)	0-9 l/m ² 0-3,8 US gal/m ² 2000W/586 BTU/hr	0-9 l/m ² 0-3,8 US gal/m ² 2000W/586 BTU/hr	0-9 l/m ² 0-3,8 US gal/m ² 2000 W/586 BTU/hr	0-9 l/m ² 0-3,8 US gal/m ² 2000 W/586 BTU/hr
Water connection	¾" pipe thread	¾" pipe thread	¾" pipe thread	¾" pipe thread
Drain connection	3 x 1" hose nipple	3 x 1" hose nipple	3 x 1" hose nipple	3 x 1" hose nipple
Replenishment containers	Dev./fix. 30l/8 US gal.	Dev./fix. 30l/8 US gal.	Dev./fix. 30 l/8 US gal.	Dev./fix. 30 l/8 US gal.
Max. power consumption	3450 VA	5900VA	3450 VA	5900 VA
Average power consumption:				
Operate	3100 W	5000W	3100 W	5000 W
Power save	600 W	1000W	600 W	1000 W
Night mode	450 W	600 W	450 W	600 W
Power supply:				
3/N/PE ~ 400V, 50/60 HZ		3 x 16 amp		3 x 16 amp
1/N/PE ~ 230V, 50/60 HZ	1 x 16 amp		1 x 16 amp	

Technical Specifications