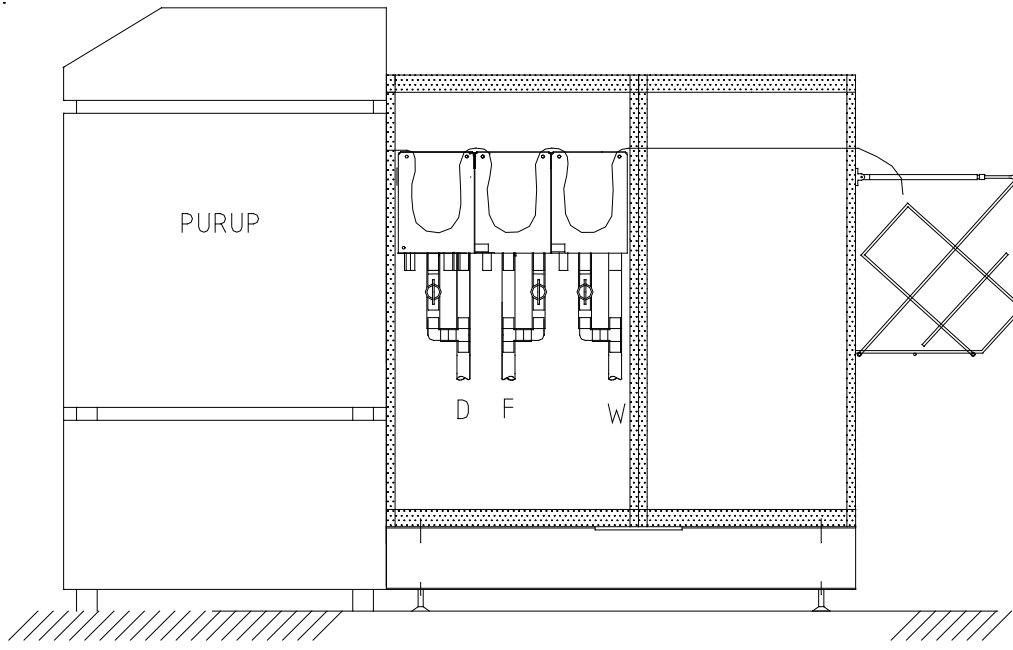


Important

Your on-line processor has a built in exhaust blower. If the main switch is switched off, the blower is disconnected and chemical fumes can damage conveyor/imagesetter. Use the bulid in timer to control on/off/night mode of the processor to ensure that the exhaust blower is always running.



Purup-Eskofot Image-Maker B1 / B2

**Hope / Carnfeldt
EG 901
EG 1141**

8.1 General

This section contains the processor's basic operating instructions for working on-line with an ImageMaker.

Before operating the processor on-line, the procedures in section three (Installation) must be performed. Read this entire section and section four (Operation) before attempting to operate the processor.

8.2 Installation of On-Line Section

Special care should be taken when the processor is connected to an ImageMaker. It is advis-

able to install the ImageMaker first. The ImageMaker should be "levelled" and be put in its final position before the processor is connected.

Install the processor as described in section three. Level the processor to its final position before chemistry is added.

Connect the 25 pin interface cable to the conveyor. Turn the power on and test the installation.

Contents

8.1 General..... 89

8.2 Installation of On-Line Section..... 89

Communication Signals..... 91

Interface Board Drawing 4080106a..... 92

Interface Board Location Drawing 4080106b 93

Connection Cable 305417 Purup - Processor 94

Dev./Fix./Wash Rack 90 cm R43 1 7/8, Drawing 5974 95

Rack Side l.w. Gears R43 1 7/8, Drawing 117815 96

Rack Side r.w. Gears R43 1 7/8, Drawing 117825 97

Dry Rack R60 HTD Drive EG901, Drawing 320108a 98

Dry Rack R60 HTD Drive EG901, Drawing 320108b..... 99

Interconnection Diagram 6361 100

Block Diagram 6359 101

Installationview 6328..... 102

Installationview 6337..... 103

Installationsview 6342 104

Technical Specifications ImageMaker B1/B2..... 105

Edition: 20 June 2003

Product numbers:

320800



320804

330801

330804



SECTION 8

Communication Signals

To display the signals from the ImageMaker use the information screen shown below. To access from the main menu push **S**  



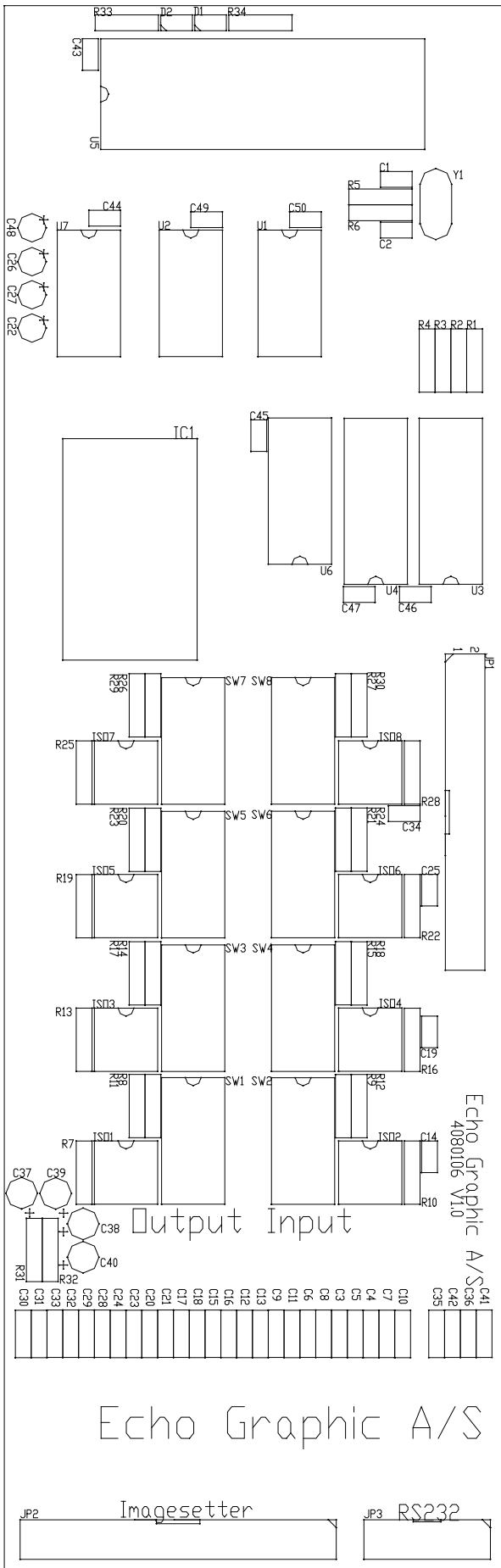
For more information see section four (Operation).

	CON1	CON2	CON3	CON4
IN-PUT	0	1	0	1
	PH01	PH02	PH03	PH04
	0	1	0	1

Status conveyor switches. Not used for Purup-Eskofot models.

Status signals from the ImageMaker

- PH01 - PRLITE - Shifts to night mode
- PH02 - PROREQ - Forces the processor to start up.
- PH03 - PROSEL - Selects material (only combi models)
- PH04 - Not used

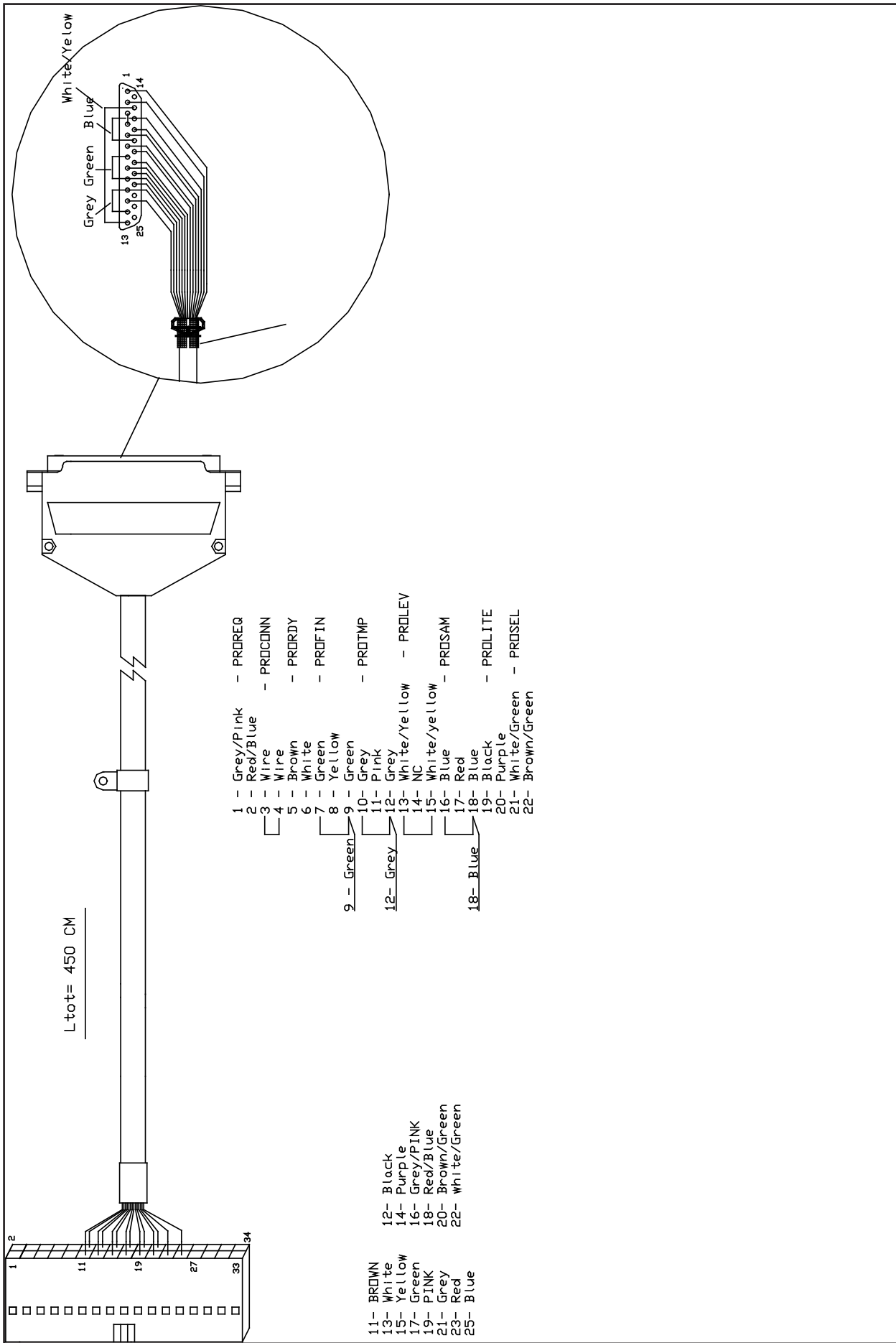


8.4 Drawings and Jumper Settings

Jumper Settings with Purup-Eskofot Imagesetter B1/B2

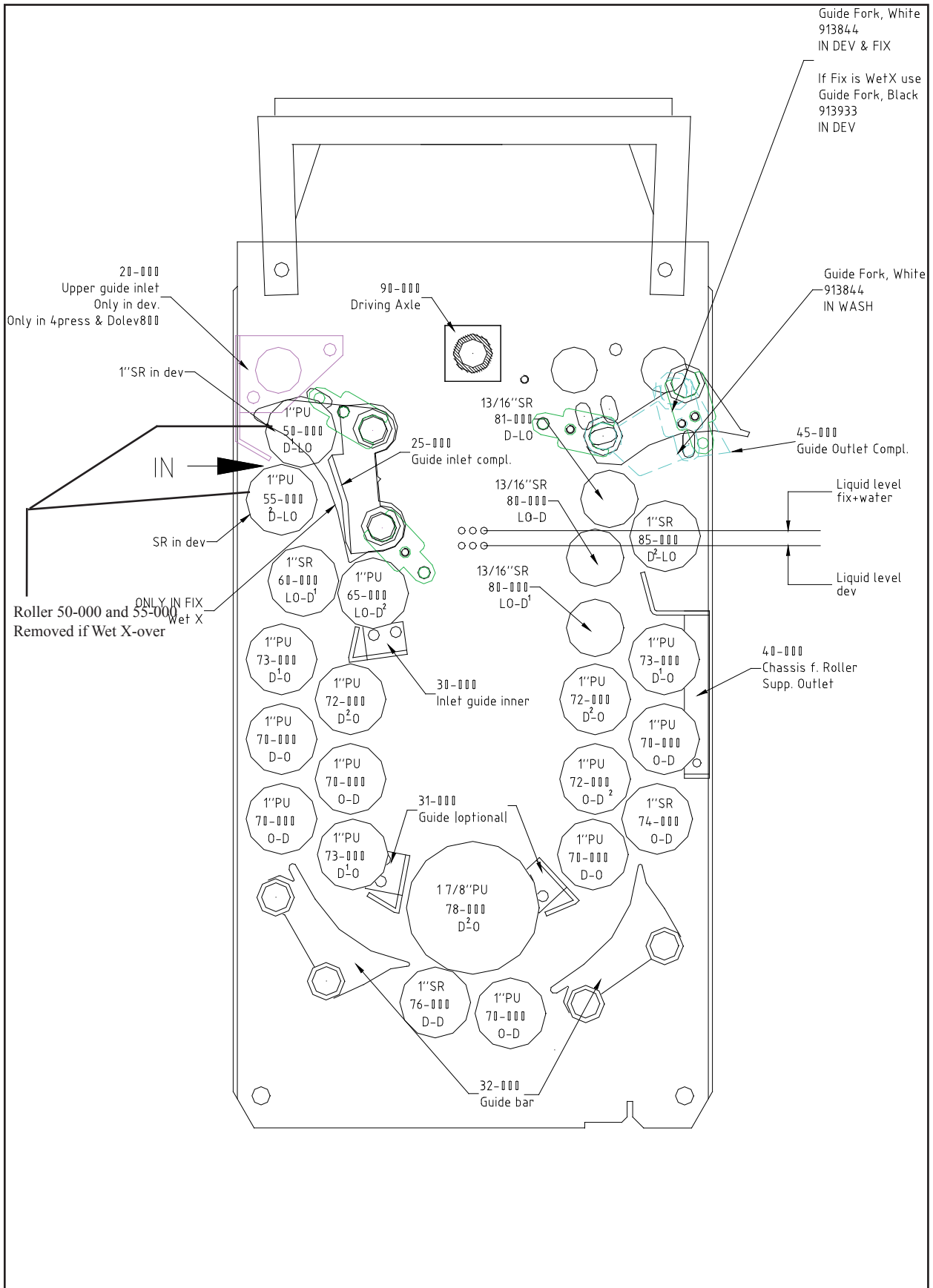
SWITCH	POS 1	POS 2	POS 3	POS 4	POS 5	POS 6	POS 7
SW1	ON			ON			ON
SW2	NO		ON				ON
SW3	NO			ON			ON
SW4	NO			ON			ON
SW5	NO				ON		ON
SW6	NO					ON	ON
SW7	NO						ON
SW8	NO						ON

SECTION 8



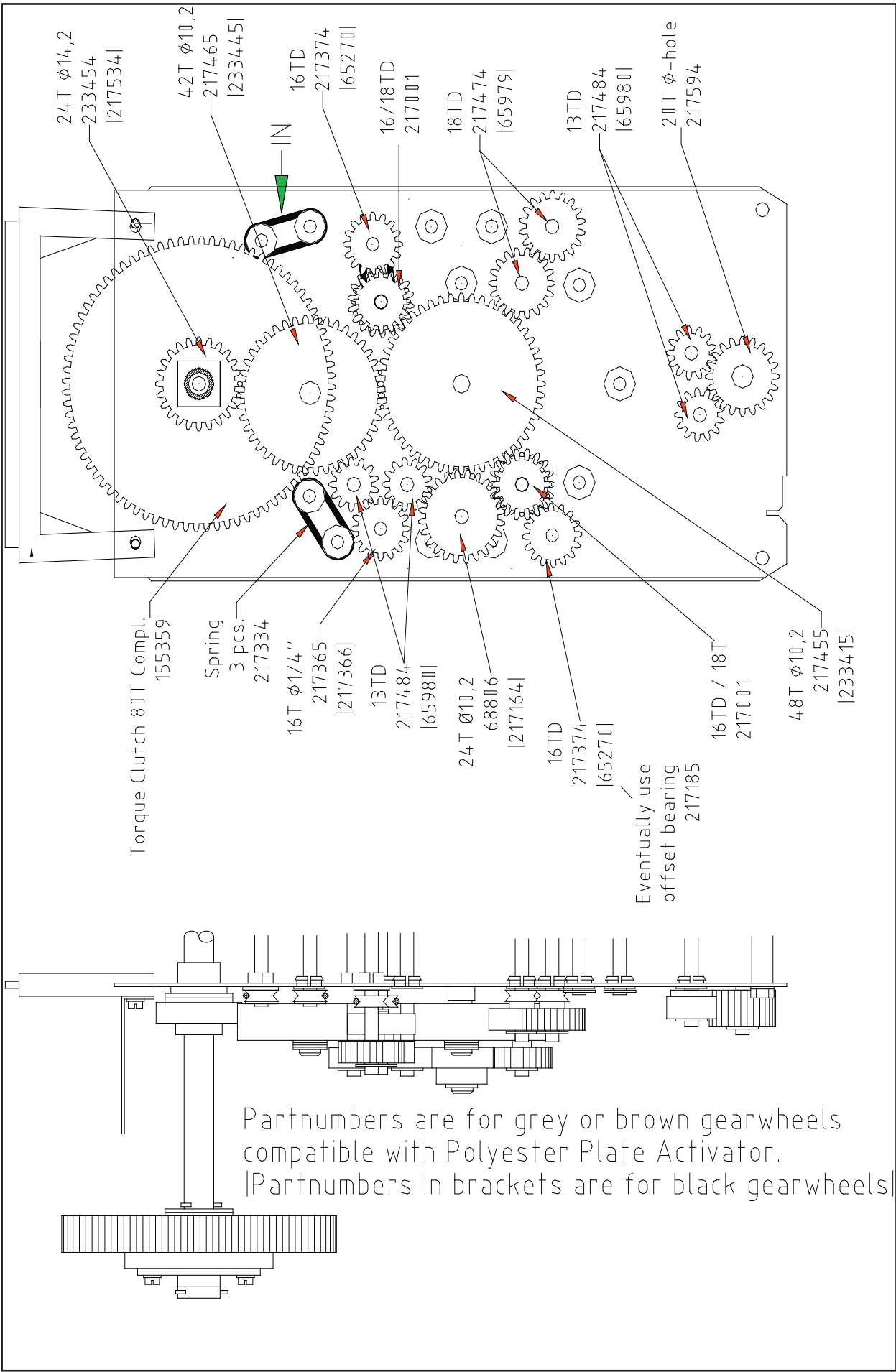
Connection Cable 305417 Purup - Processor

SECTION EIGHT: On-Line Description Purup-Eskofot Models



SECTION 8

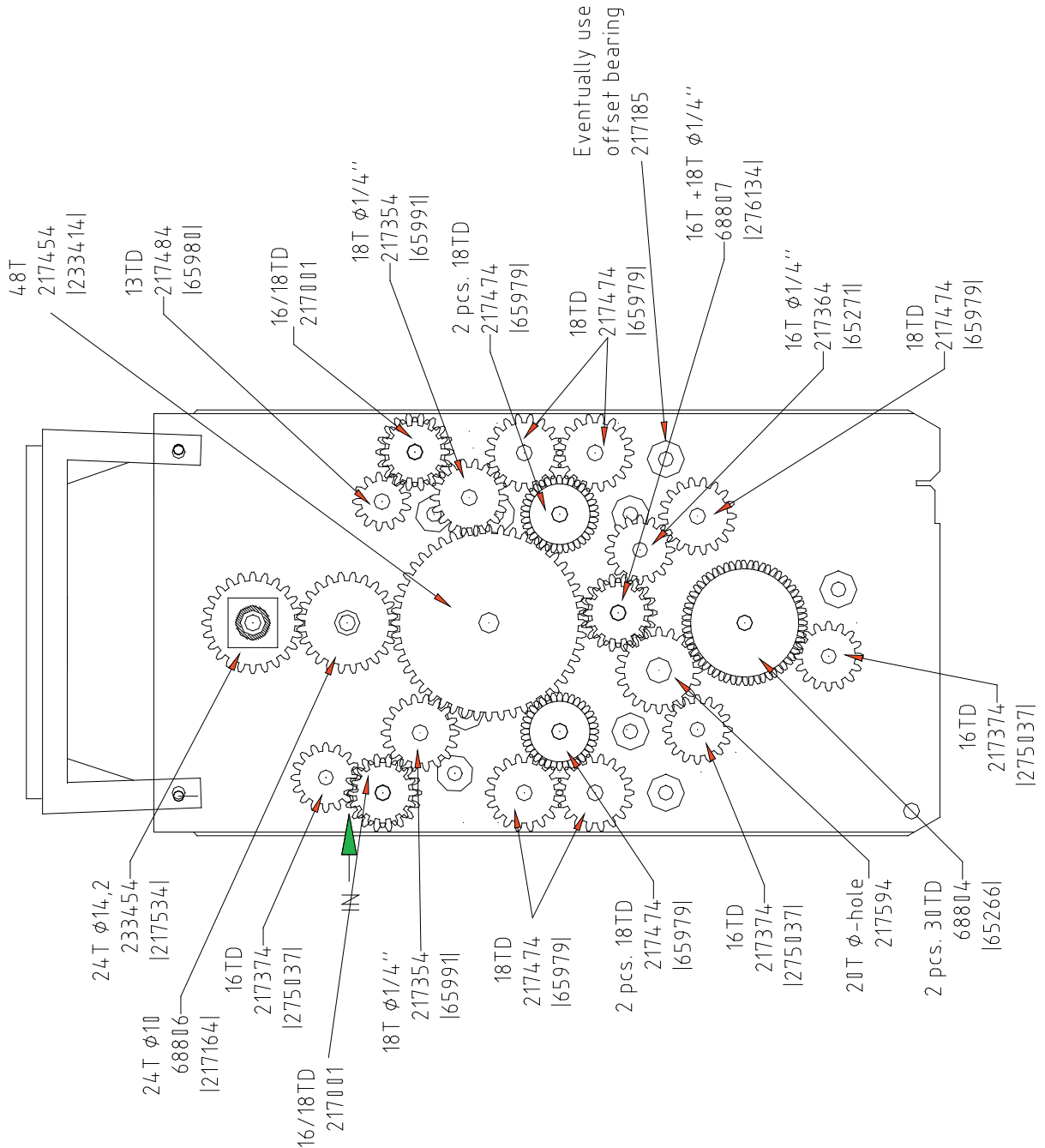
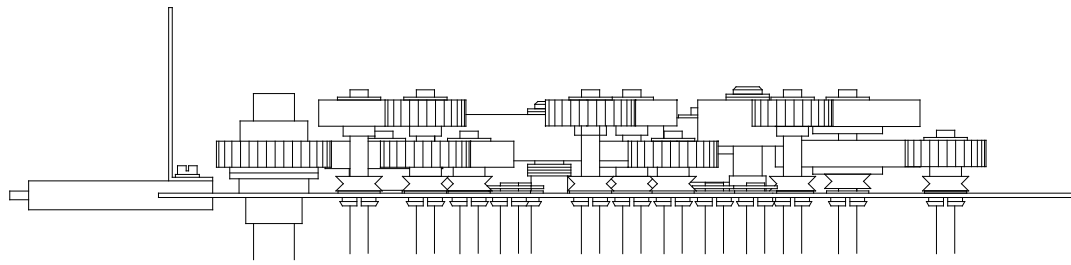
SECTION EIGHT: On-Line Description Purup-Eskofot Models



SECTION 8

Partnumbers are for grey or brown gearwheels compatible with Polyester Plate Activator.
 Partnumbers in brackets are for black gearwheels

SECTION EIGHT: On-Line Description Purup-Eskofot Models

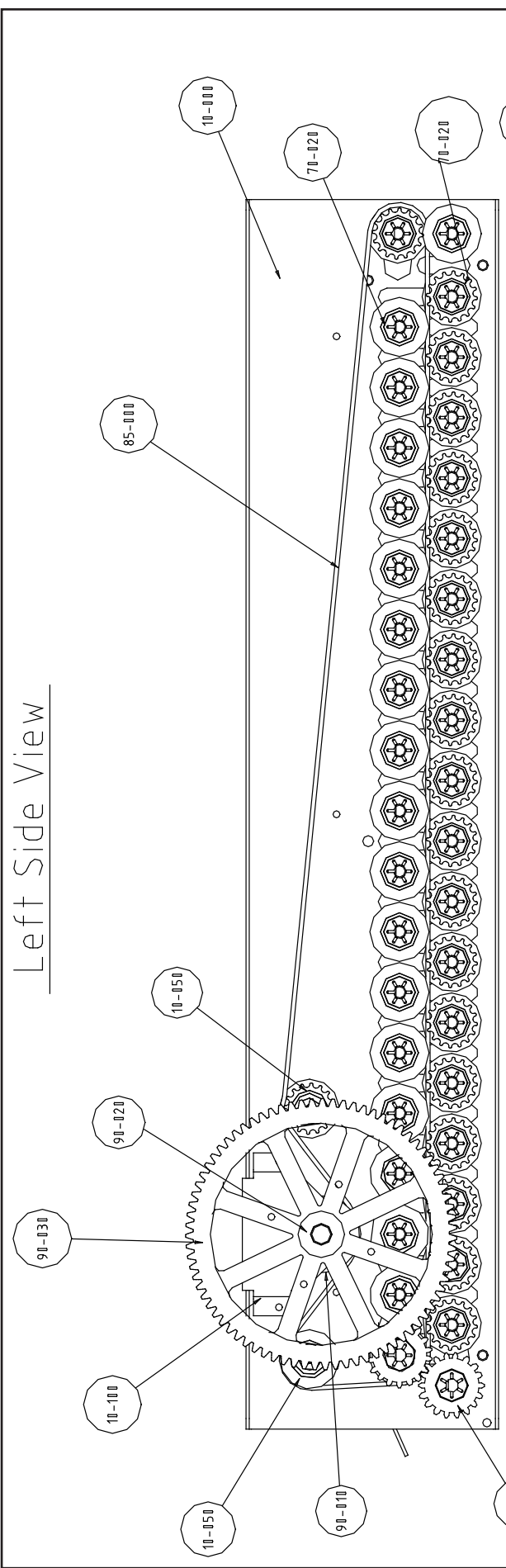


Partnumbers are for grey or brown gearwheels compatible with Polyester Plate Activator.
 |Partnumbers in brackets are for black gearwheels|

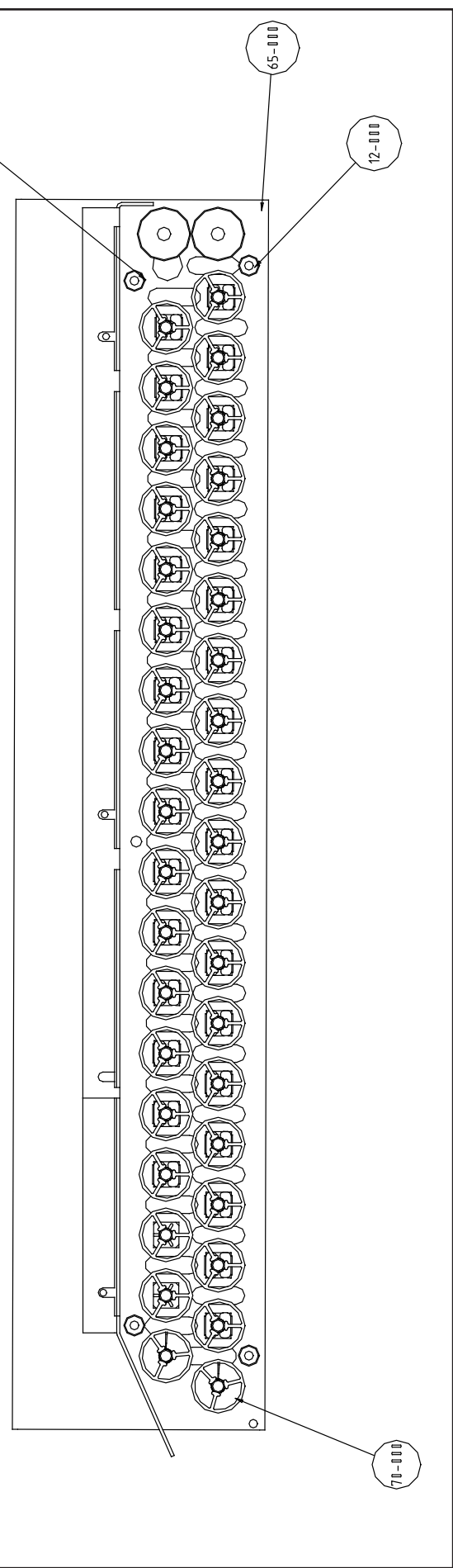
SECTION 8

SECTION 8

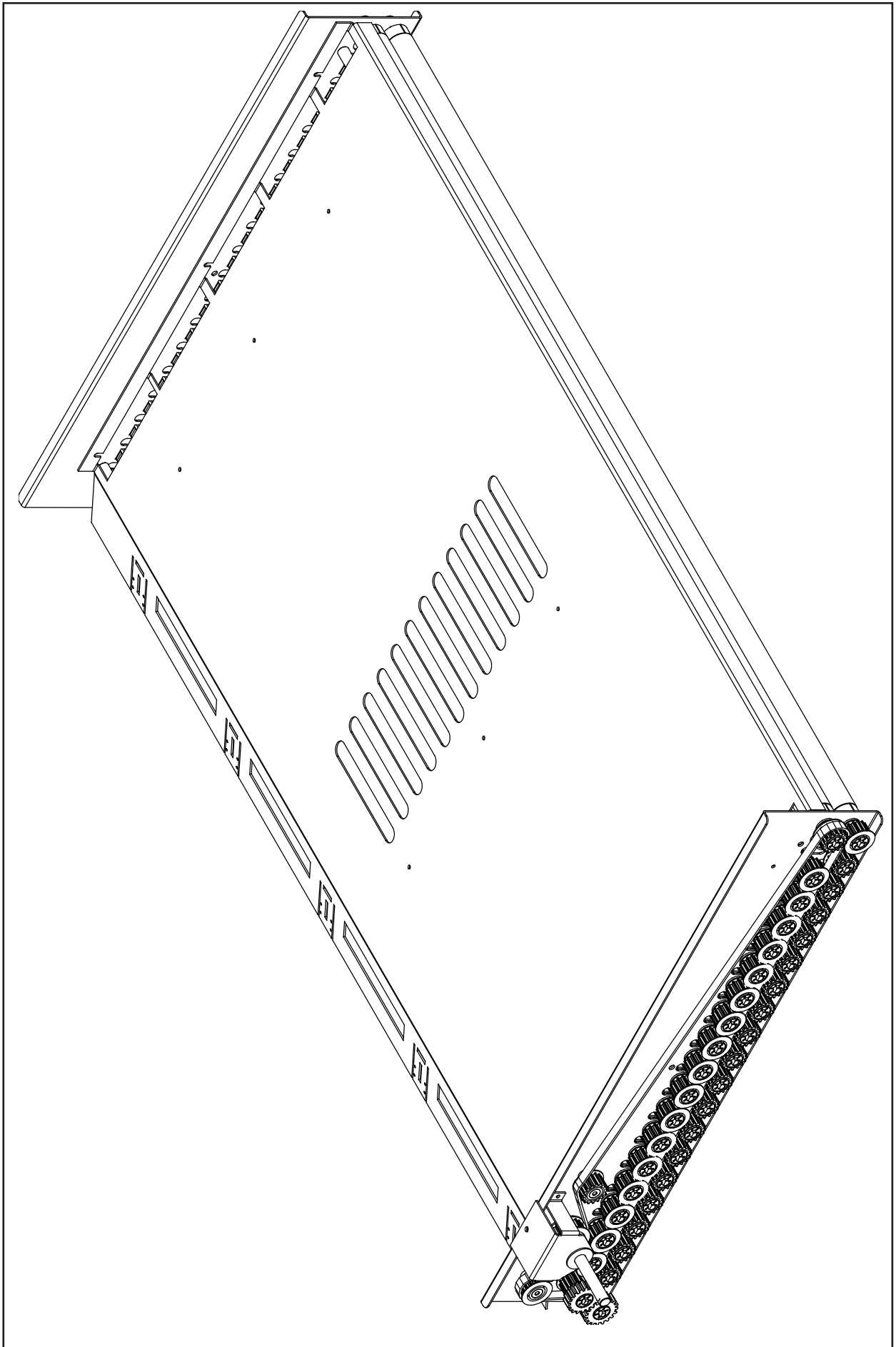
Left Side View



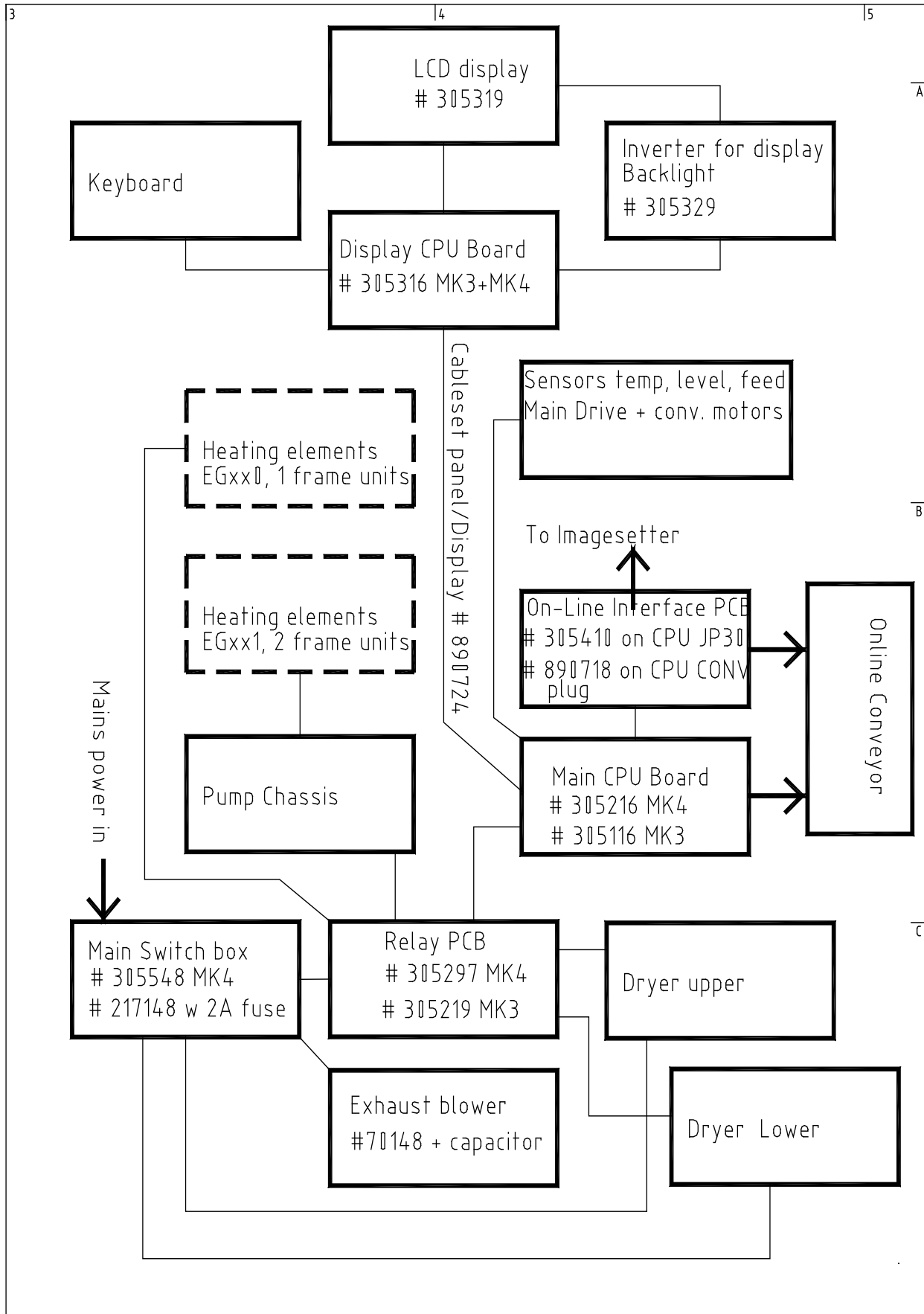
Section View



Dry Rack R60 HTD Drive EG901, Drawing 320108a



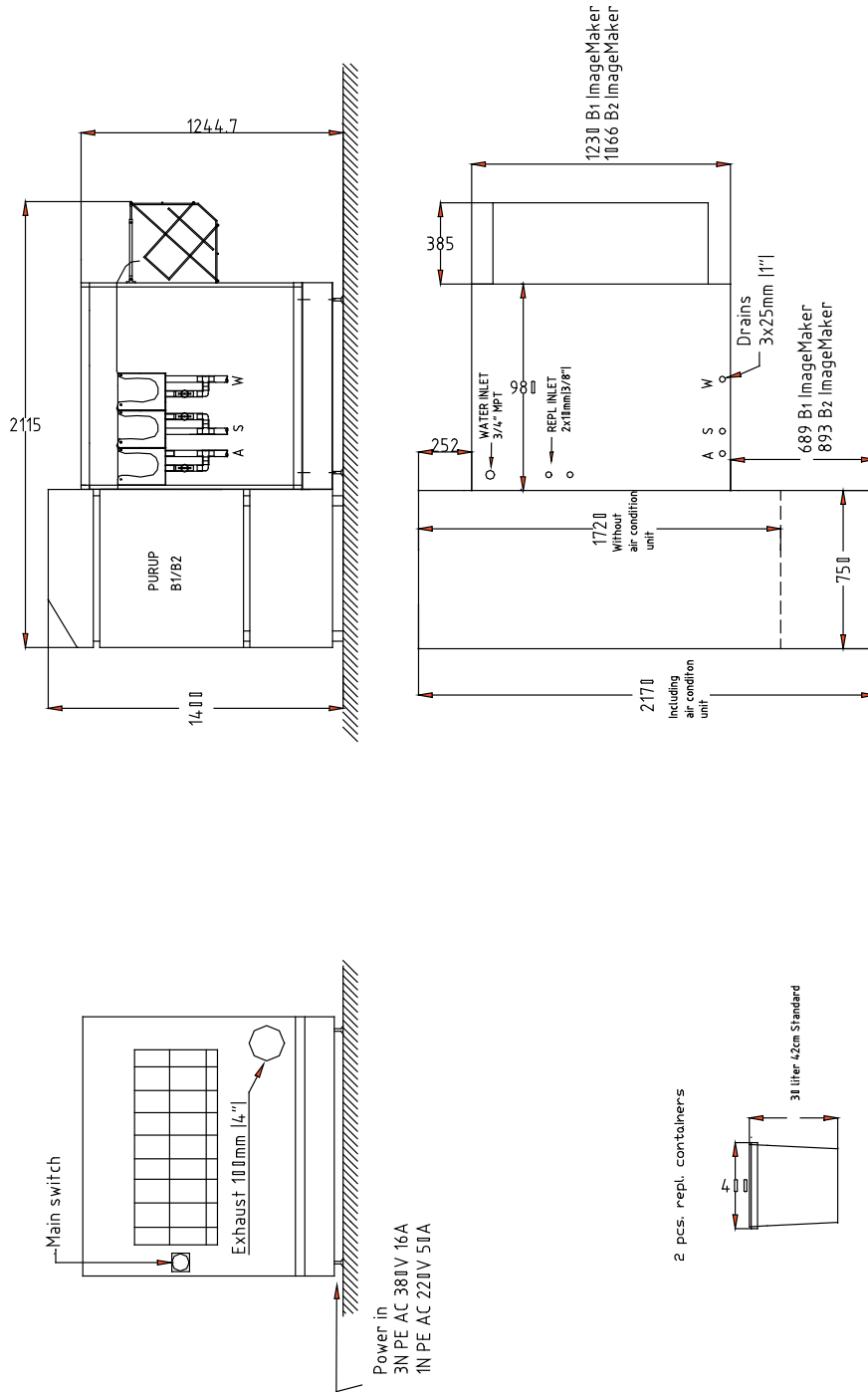
SECTION EIGHT: On-Line Description Purup-Eskofot Models



Echo Graphic A/S Haandvaerkervej 2 DK-9560 Hadsund, Denmark Phone int.: +45 98 57 19 55 Fax int.: +45 98 57 15 91	Design/Draw : CV	Scale : :	Date : 10-01-02
	Name Block diagr.EG MK4	Drawing no. : 6359	-

SECTION EIGHT: On-Line Description Purup-Eskofot Models

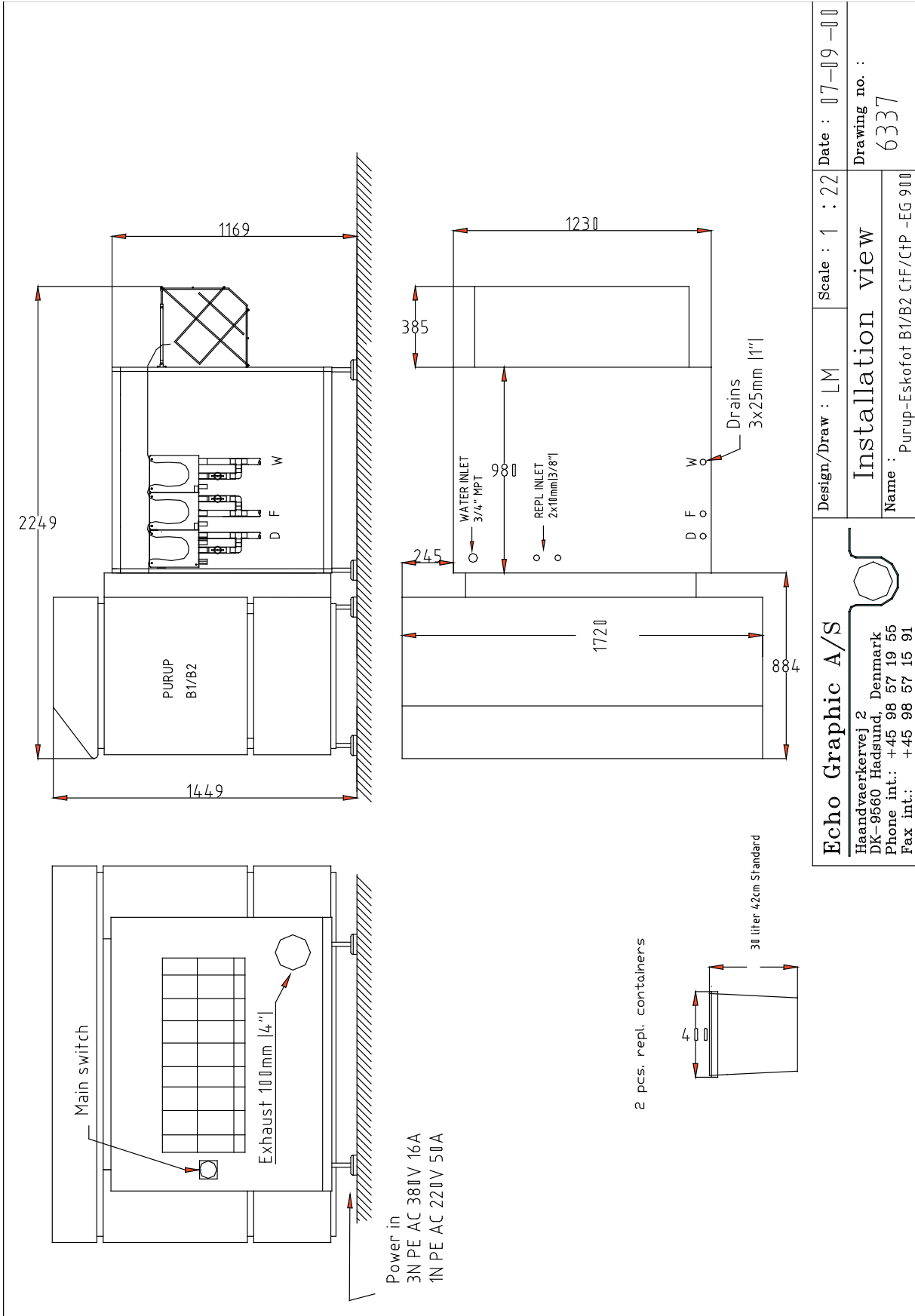
SECTION 8



Echo Graphic A/S Haandvaerkevej 2 DK-9560 Hadsund, Denmark Phone int.: +45 98 57 19 55 Fax int.: +45 98 57 15 91	Design/Draw : UN	Scale : 1 : 30	Date : 7 -9 -00
	Installation view Name : Purup-Eskofot B1/B2 CTF/CTP-EP/EG900		
			Drawing no. : 6328

Installationview 6328

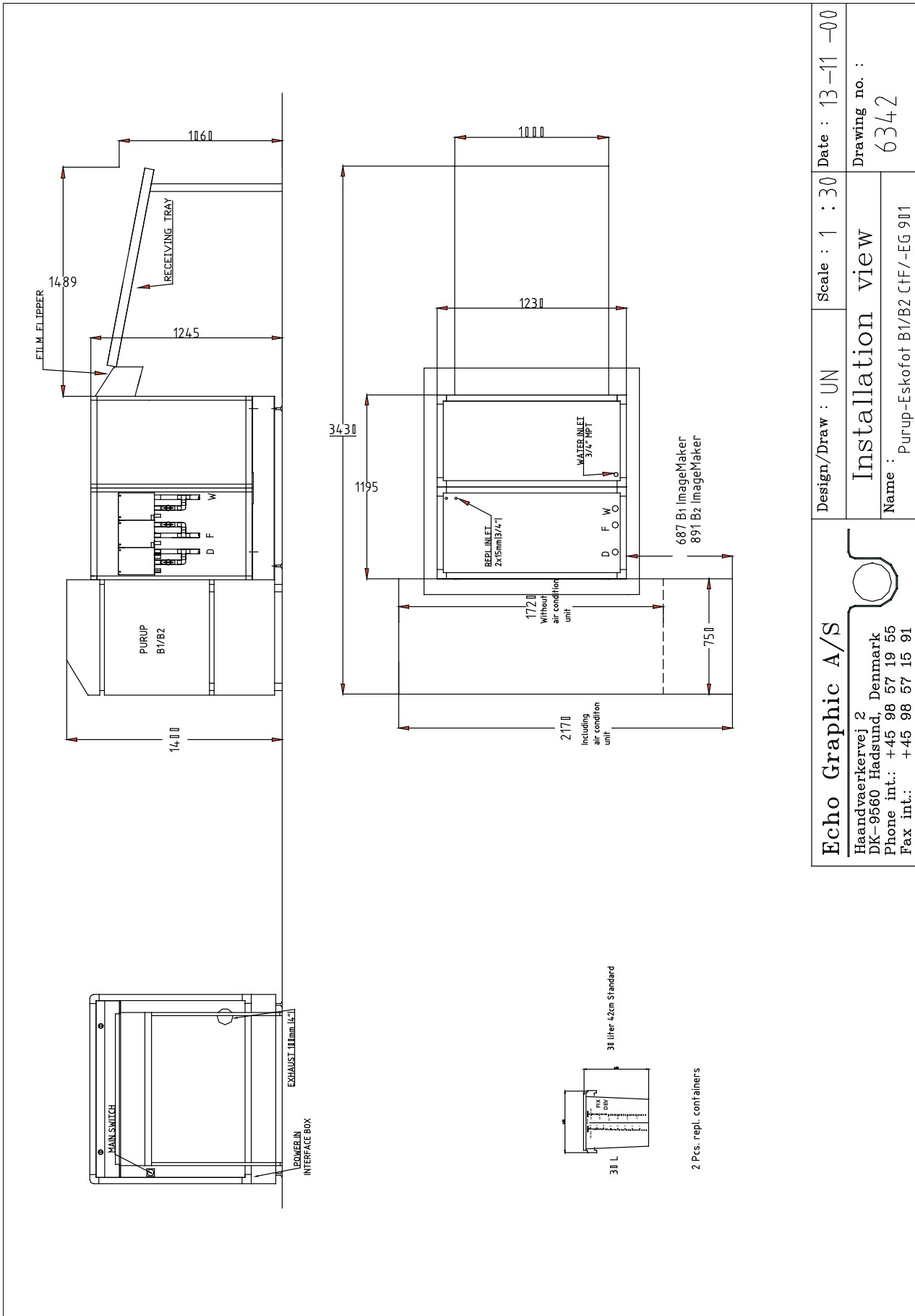
SECTION EIGHT: On-Line Description Purup-Eskofot Models



Installationview 6337

SECTION EIGHT: On-Line Description Purup-Eskofot Models

SECTION 8



Echo Graphic A/S Haandvaerkevej 2 DK-9560 Hadsund, Denmark Phone int.: +45 98 57 19 55 Fax int.: +45 98 57 15 91	Design/Draw : UN	Scale : 1 : 30	Date : 13-11-00
	Installation view		
Name : Purup-Eskofot B1/B2 CTF/-EG 901			
Drawing no. : 6342			

Installationsview 6342

Hope/Carnfeldt On-Line Processors for Eskographic ImageMakers:

	EG 900	EP 900	EG 901	EGP 901
Dimensions of on-line system				
Length	222 cm / 87.4"	222 cm / 87.4"	222 cm / 87.4"	281 cm / 110.7"
Width	217 cm / 85.4"	217 cm / 85.4"	217 cm / 85.4"	217 cm / 85.4"
Height	140 cm / 55.1"	140 cm / 55.1"	140 cm / 55.1"	140 cm / 55.1"
Shipping dimensions				
Length	145 cm / 58"	133 cm / 52.4"	133 cm / 52.4"	175 cm / 68.9"
Width	142 cm / 55.9"	142 cm / 55.9"	142 cm / 55.9"	142 cm / 55.9"
Height	143 cm / 56.3"	143 cm / 56.3"	143 cm / 56.3"	129 cm / 56.3"
Weight				
Net	350 kg/772 lb.	350 kg/772 lb.	350 kg/772 lb.	520 cm/1146 lb
Gross	435 kg/960 lb.	435 kg/960 lb.	435 kg/960 lb.	625 cm/1378 lb
Specifications				
Inlet width	91 cm / 36"	91 cm / 36"	91 cm / 36"	91 cm / 36"
Tank capacity	29 l / 7.7 US gal.	16 l / 4.3 US gal.	29 l / 7.7 US gal.	29 l / 7.7 US gal.
Rack length dev.	32 cm / 12.6"	20 cm / 7.9"	44 cm / 17.3"	44 cm / 17.3"
Developing time min.-max.	20-80 sec.	15-90 sec	15-90 sec.	15-120 sec.
Speed at 30 sec. dev. time	64 cm/min. 25.2"/min		88 cm/min. 34.6"/min.	88 cm/min. 34.6"/min.
Speed at 20 sec. dev. time		60 cm/min. 23.6"/min.		60 cm/min. 23.6"/min.
Max. film length off-line	10 m / 32.8 ft	2 m / 6.6 ft.	10 m / 32.8 ft	10 m / 32.8 ft.
Min. film size off-line	30x42 cm 11.8 x 16.5"	30x42 cm 11.8 x 16.5"	18 x 10 cm 7 x 4"	A4
Max. format (set by ImageMaker)	76x86 cm 29.9 x 33.9"	76x86 cm 29.9 x 33.9"	86 x 121 cm 34 x 47.6"	21 x 29 cm 8.3" x 11.4"
Dev./fix./wash temperature range	20-45°C 68 - 113°F	20-45°C 68 - 113°F	20-45°C 68 - 113°F	20-45°C 68 - 113°F
Exhaust blower	Built in	Built in	Built in	Built in
Exhaust connection	Ø 10 cm	Ø 10 cm	Ø 10 cm	Ø 10 cm
Circulation rate dev., fix.	10 l/min. 2.7 US gal.	10 l/min. 2.7 US gal.	22 l/min. 5.8 US gal.	22 l/min. 5.8 US gal.
Water consumption (operate)	3.5 l/min. 0.9 US gal	3.5 l/min. 0.9 US gal	3.5 l/min. 0.9 US gal	3.5 l/min. 0.9 US gal
Emission of heat to room (operate)	3000W 879 BTU/hr.	3000W 879 BTU/hr.	3000 W 879 BTU/hr.	3000 W 879 BTU/hr.
Water connection	¾" MPT	¾" MPT	¾" MPT	¾" MPT
Drain connection	3x1" hose nipple	3x1" hose nipple	3 x 1" hose nipple	6x1"
Replenishment containers	Dev/fix 30l.	Dev/fix 30l	4 x 30 l	4 x 30 l
Max. power consumption	5900VA	5900VA	7900 VA	9400 W
Average power consumption:				
Operate	5000W	5000W	5700 W	6200W
Power save	1000W	1000W	3500 W	3500 W
Night mode	600 W	600 W	1100 W	1100 W
Power supply:				
1x230ACV+/-10% / 50/60Hz	30 amp	30 amp	40 amp	40 amp
3x230ACV+/-10% / 50/60Hz	3 x 16 amp	3x16 amp	3 x 16 amp	3x16 amp

SECTION EIGHT: On-Line Description Purup-Eskofot Models

Hope / Carnfeldt On/Off-Line Processors

	EG 1140, film	EG 1141, film	EG1661, Film
Dimensions of system			
Length	137 cm / 53.9"	158 cm / 62.2"	191 cm
Width	146 cm / 57.5"	146 cm / 57.5"	205 cm
Height	110 cm / 43.3"	110 cm / 43.3"	110 cm / 43.3"
Shipping dimensions			
Length	175 cm/68.9"	178 cm/68.9	222 cm / 87.4"
Width	142 cm / 55.9"	158 cm / 62.2"	177 cm / 69.7"
Height	129 cm/50.8"	129 cm/50.8"	133 cm / 52.4"
Weight			
Net	370 kg / 816 lb.	400 kg / 882 lb.	580 kg /1276 lb.
Gross	470 kg / 1136 lb.	500 kg / 1103 lb.	750 kg / 1650 lb.
Specifications			
Inlet width	114 cm / 36"	114 cm / 45"	166 cm / 65,0"
Tank capacity	34 l/9,0 US gal.	36 l / 9.5 US gal.	52 l / 18.4 US gal.
Rack length dev.	32 cm / 12.6"	44 cm / 17.3"	44 cm / 17.3"
Developing time min.-max.	20 – 80 sec.	15 – 90 sec.	20 – 90 Sec.
Speed at 30 sec. dev. time	64 cm/min. 25.2"/min	88 cm/min 34.6"/min.	88 cm/min 34.6"/min.
Max. film length off-line	10 m / 32.8 ft	10 m / 32.8 ft	8 m / 26,2 ft
Min. film size off-line	30 x 42 cm 11.8x16.5"	30x42 cm / 11.8x16.5"	18 x 10 cm / 7.1 X 3.9"
Dev./fix./wash temperature range	20 - 45°C 68 -113°F	20-45°C/68-113°F 68 -113°F	20-45°C/68-113°F 68 -113°F
Exhaust blower	Built in	Built in	Built in
Exhaust connection	Ø 10 cm	Ø 10 cm	Ø 10 cm
Circulation rate dev., fix.	10 l/min. 2.7 US gal.	22 l/min. / 5.8 US gal.	40 l/min. / 10.5 US gal.
Water consumption (operate Max)	3.5 l/min. 0.9 US gal	3.5 l/min. / 0.9 US gal.	0-10 l/m ² / 0 – 2,6 US gal m ²
Emission of heat to room (operate)	3000 W / 879 BTU/hr.	3000 W / 879 BTU/hr.	3000 W / 879 BTU/hr.
Water connection	¾" pipe thread	¾" pipe thread	¾" pipe thread
Drain connection	3x1" hose nipple	3 x 1" hose nipple	3 x 1" hose nipple
Replenishment containers	30 l / 8 US gal.	30 l / 8 US gal.	30 l / 8 US gal.
Max. power consumption	5900 VA	5900 VA	9000 VA
Average power consumption:			
Operate	5000 W	5000 W	5000 W
Power save	1000 W	1000 W	1000 W
Night mode	600 W	600 W	600 W
Power supply:			
3/N/PE ~ 400V, 50/60 HZ	3 x 16 amp	3 x 16 amp	3 x 16 amp