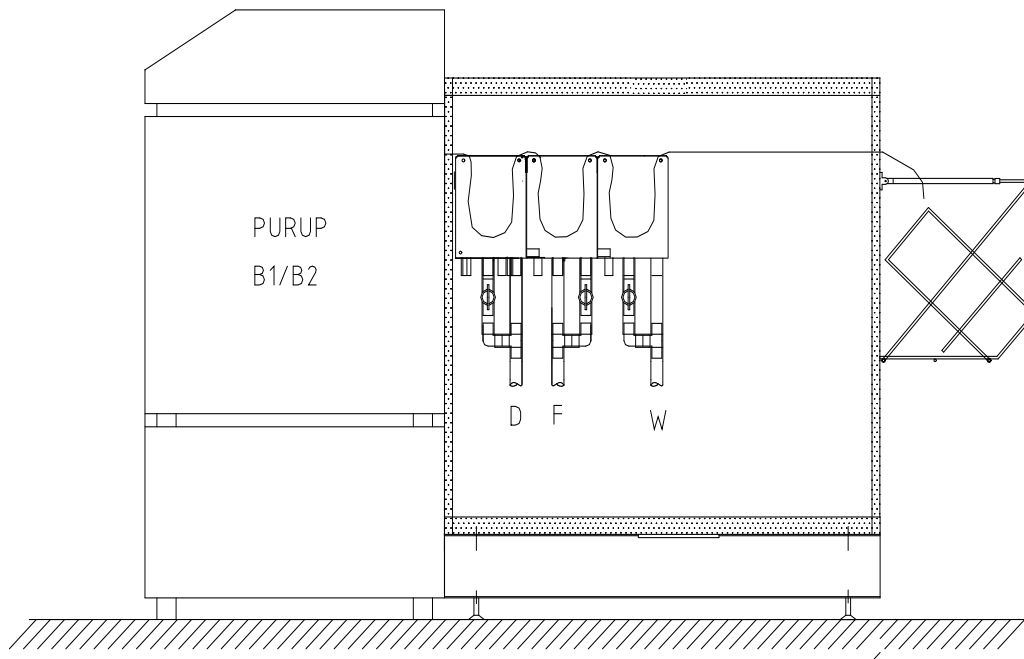


Important

Your on-line processor has a built in exhaust blower. Even if the main switch is switched off the blower will still be on. This is to prevent chemical fumes in the ImageMaker. If a timer is connected in series with the main power cable the processor has to be modified so that the exhaust blower is always running.



**Purup-Eskofot
ImageMaker B1 / B2**

**Hope / Carnfeldt
EG 900**

8.1 General

This section contains the processor's basic operating instructions for working on-line with an ImageMaker.

Before operating the processor on-line, the procedures in section three (Installation) must be performed. Read this entire section and section four (Operation) before attempting to operate the processor.

8.2 Installation of On-Line Section

Special care should be taken when the processor is connected to an ImageMaker. It is advis-

able to install the ImageMaker first. The ImageMaker should be "levelled" and be put in its final position before the processor is connected.

Install the processor as described in section three. Level the processor to its final position before chemistry is added.

Connect the 25 pin interface cable to the conveyor. Turn power on and test the installation.

Contents

8.1 General..... 89
8.2 Installation of On-Line Section..... 89
Communication Signals 91
Interface Board Drawing 4080106a..... 92
Interface Board Location Drawing 4080106b 93
Connection Cable 305417 Purup - Processor 94
R2 Roller Position Right, Drawing 316489b..... 95
R2 Gearwheel Position Left Side, Drawing 316489a 96
R2 Rack Side Right, Drawing 316489C 97
Rack Side Right Dry R38, Drawing 316108 98
Rack Side Section View Right/Left Dry R38, Drawing 316108 99
Installation view 6337..... 100
Installation view 6328..... 101
Technical Specifications 102

Edition: 13 March 2001

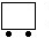
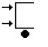
Product numbers:

320801




320802

SECTION 8

Communication Signals

To display the signals from the ImageMaker use the information screen shown below. To access from the main menu push **S**  
→ .

For more information see section four (Operation).

	CON1	CON2	CON3	CON4	
IN-PUT	0	1	0	1	
	PH01	PH02	PH03	PH04	
	0	1	0	1	

Status conveyor switches. Not used on Purup-Eskofot ImageMakers.

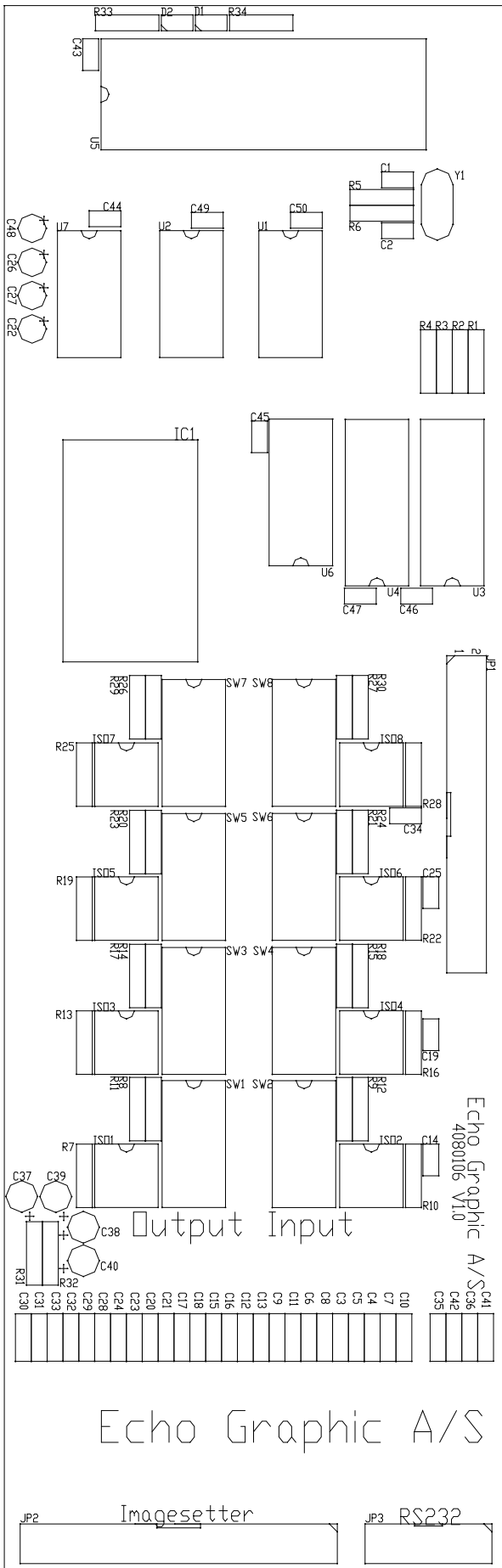
Status signals from the ImageMaker

PH01 - PRLITE - Shifts to night mode

PH02 - PROREQ - Forces the processor to start up.

PH03 - PROSEL - Selects material (only combi models)

PH04 - Not used

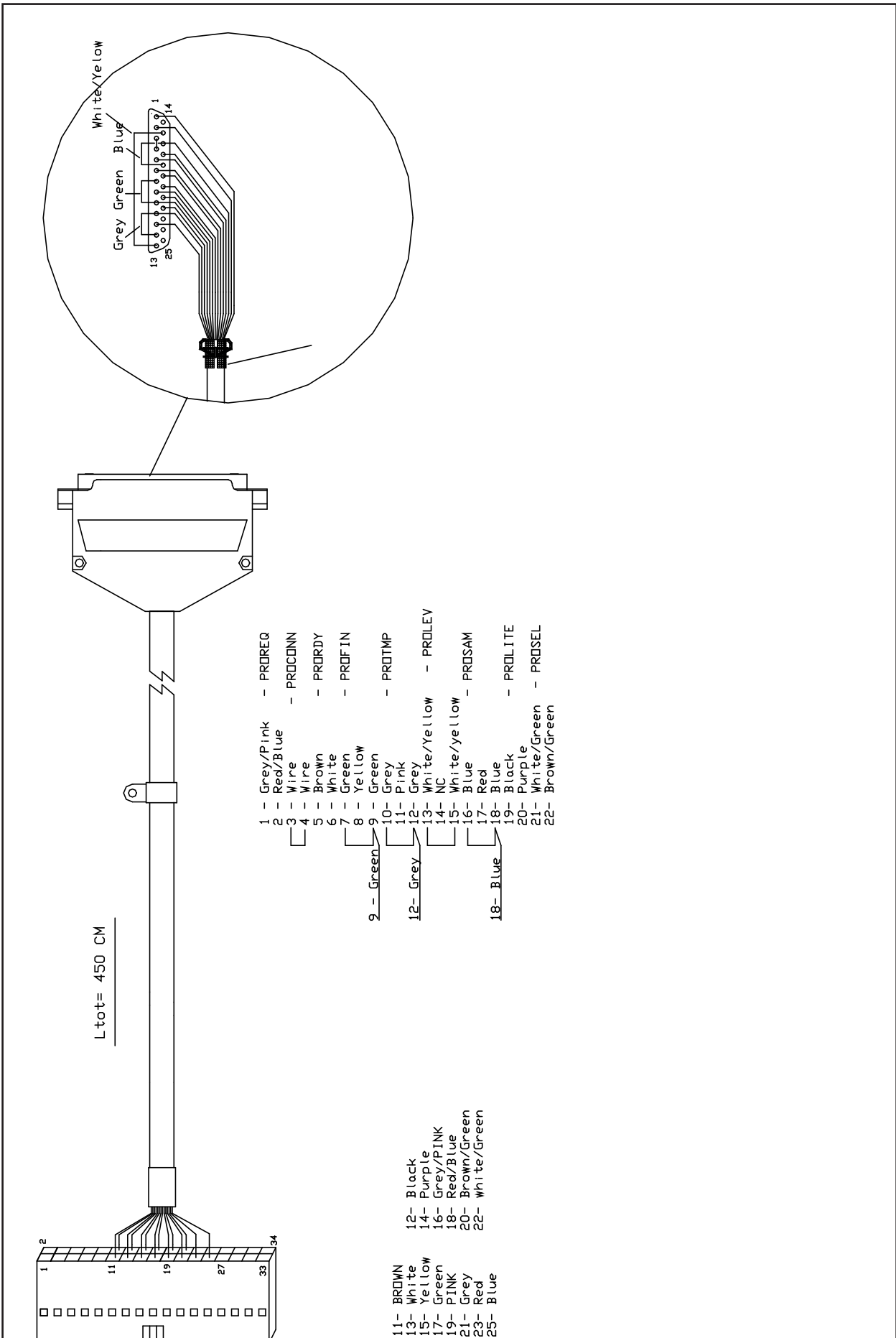


8.4 Drawings and Jumper Settings

Jumper Settings with Purup-Eskofot Imager B1/B2

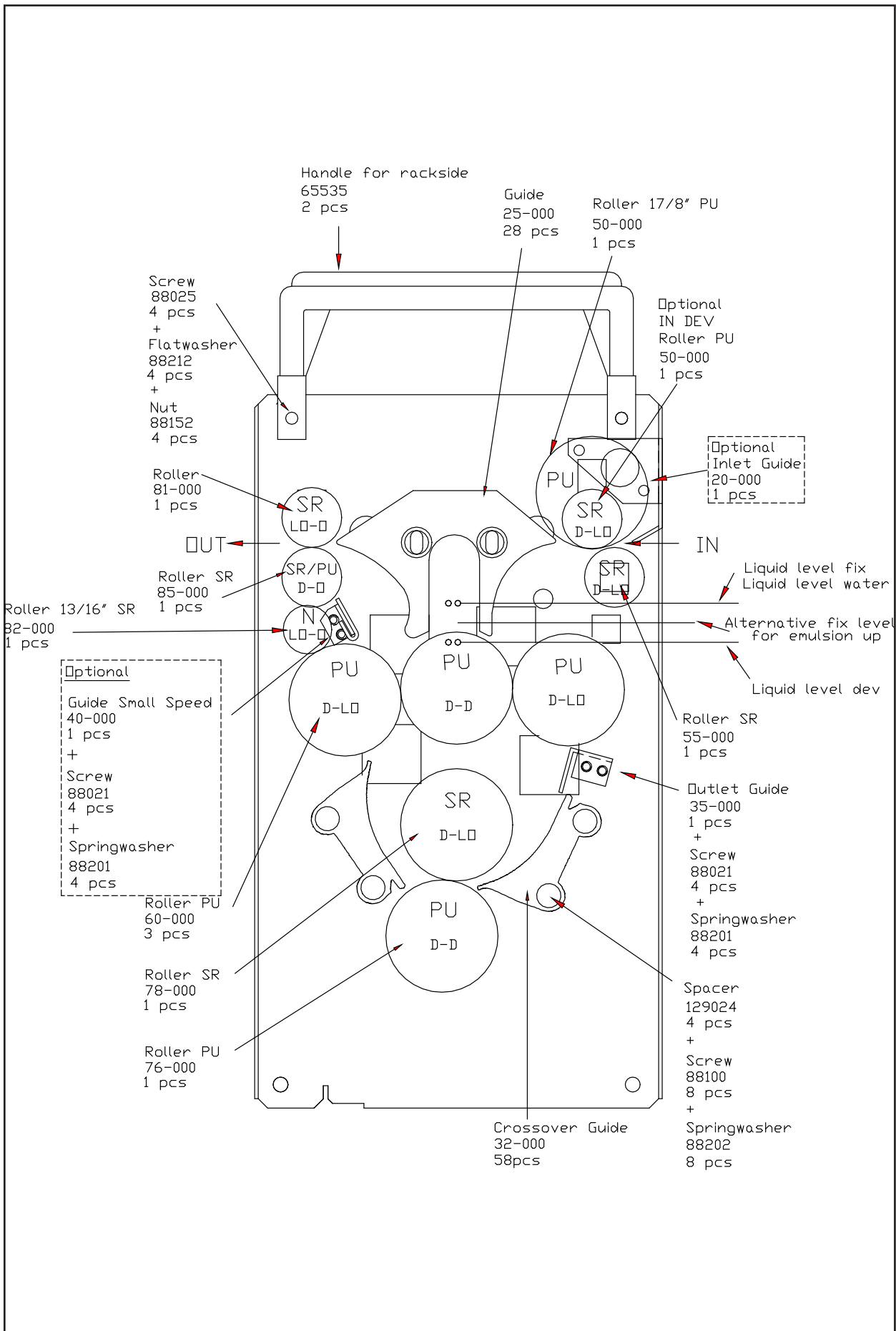
SWITCH	POS 1	POS 2	POS 3	POS 4	POS 5	POS 6	POS 7
SW1	ON						ON
SW2	ON				ON		ON
SW3	ON		ON		ON		ON
SW4	ON				ON		ON
SW5	ON				ON		ON
SW6	ON					ON	ON
SW7	ON						ON
SW8	ON						ON

SECTION 8



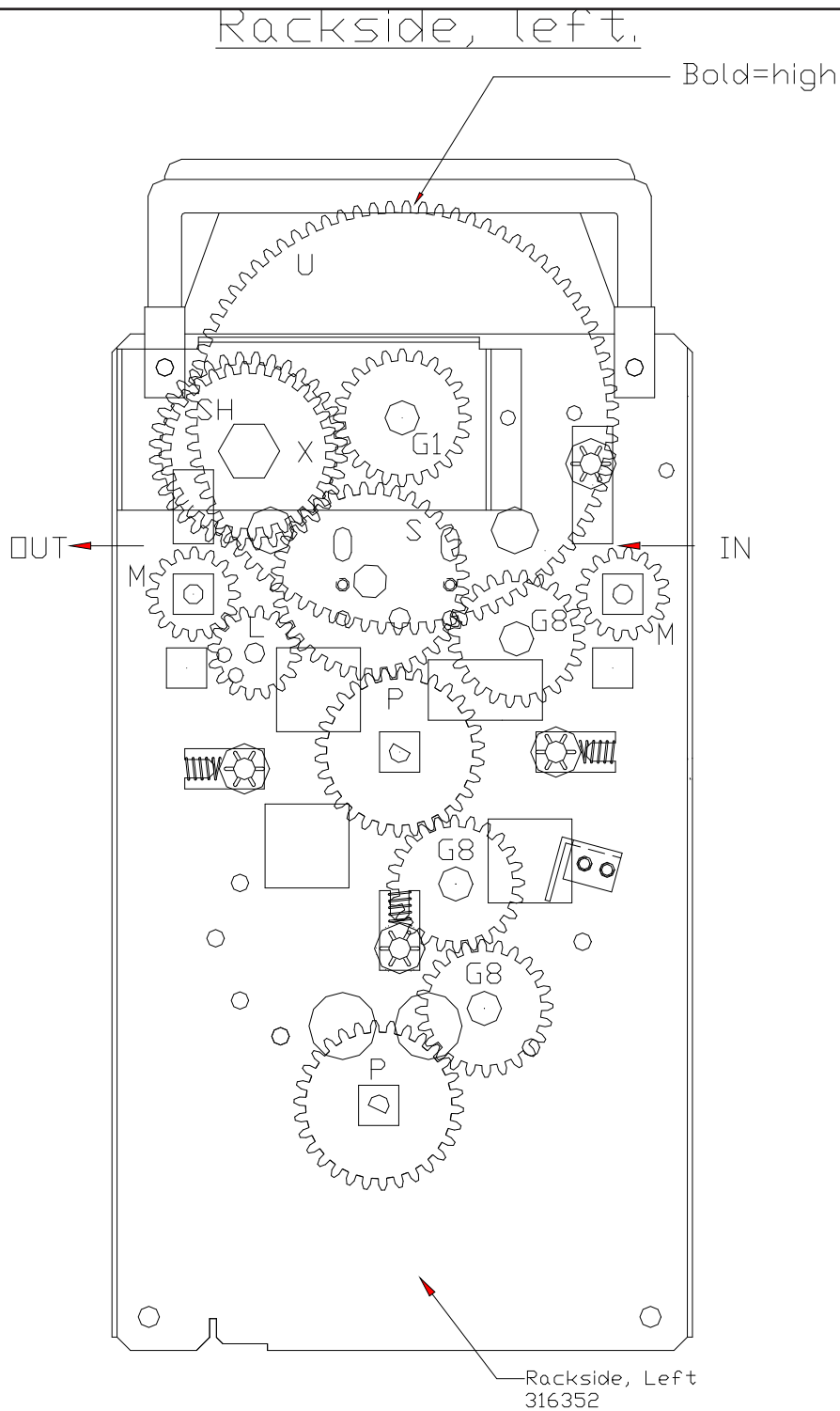
Connection Cable 305417 Purup - Processor

SECTION EIGHT: On-Line Description Purup-Eskofot Models

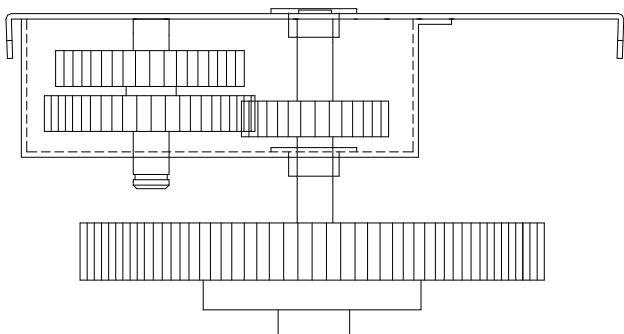


SECTION 8

R2 Roller Position Right, Drawing 316489b



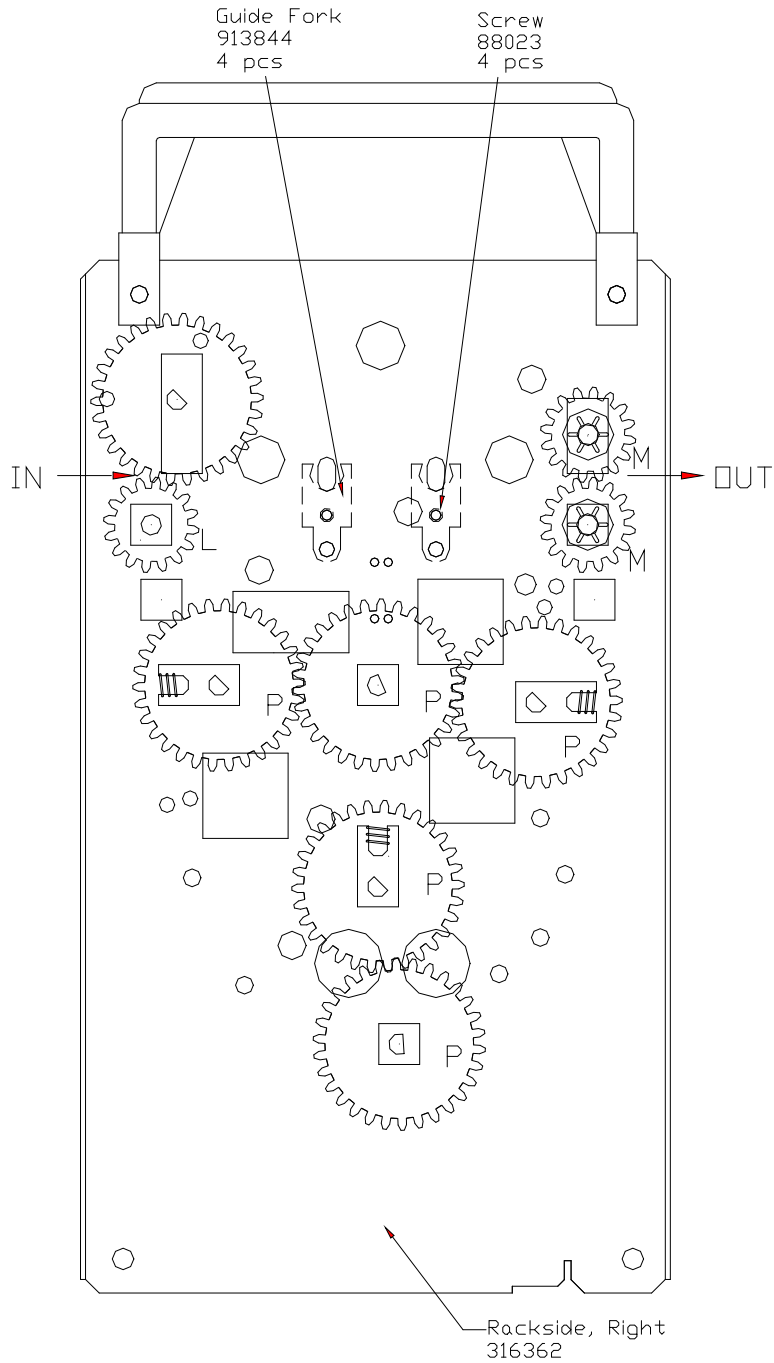
SECTION 8



R2 Gearwheel Position Left Side, Drawing 316489a

SECTION EIGHT: On-Line Description Purup-Eskofot Models

Rackside, right.



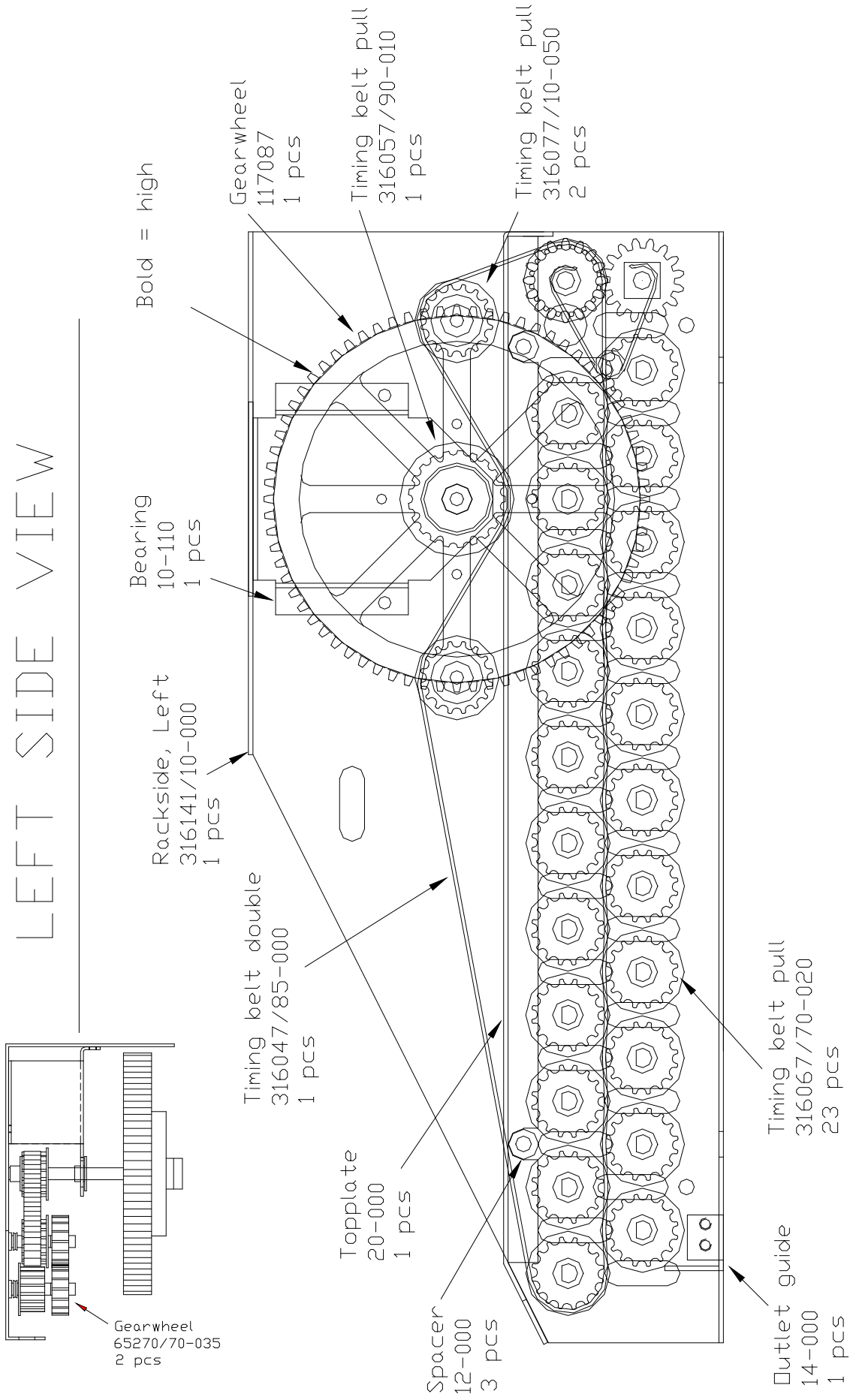
L	65271	16T	Ø 1/4"	2 pcs
M	65270	16T	D 1/4"	4 pcs
G1	276154	24T	Ø 10,2	1 pcs
G8	217164	24T	Ø 10,2	3 pcs
P	65266	30T	1/4" In - D	7 pcs
X	117528	32T	NV 16	1 pcs
SH	117518	32T	NV 16	1 pcs
S	65502	36T	Ø 10mm MSH	1 pcs
U	65456	80T	Ø 10mm MSH	1 pcs

SECTION 8

R2 Rack Side Right, Drawing 316489C

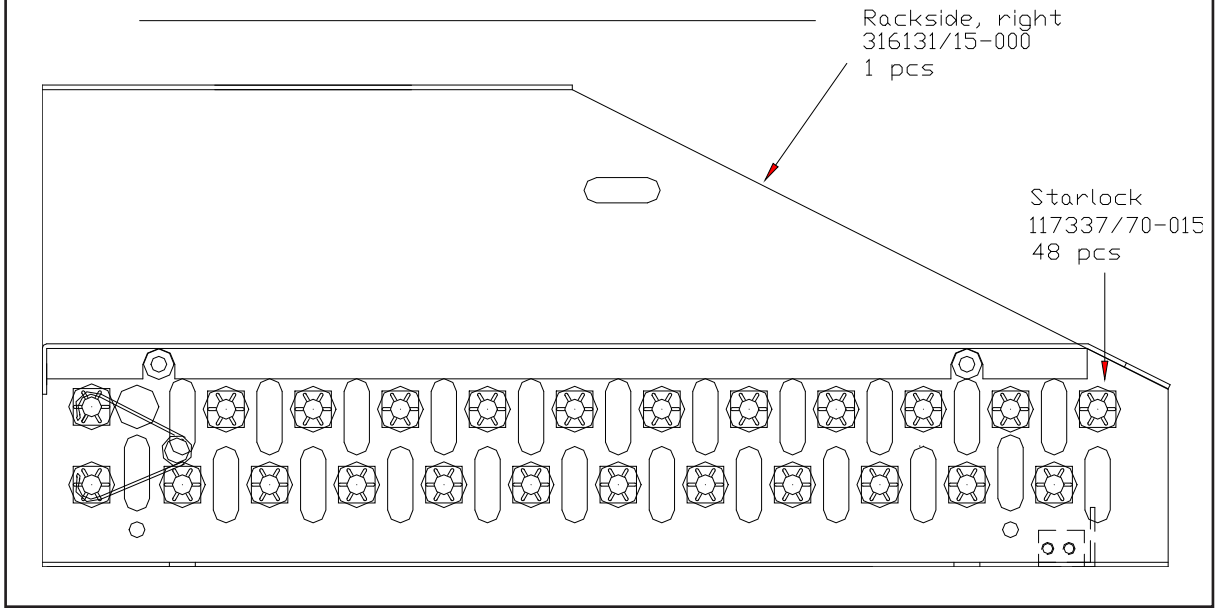
SECTION 8

LEFT SIDE VIEW

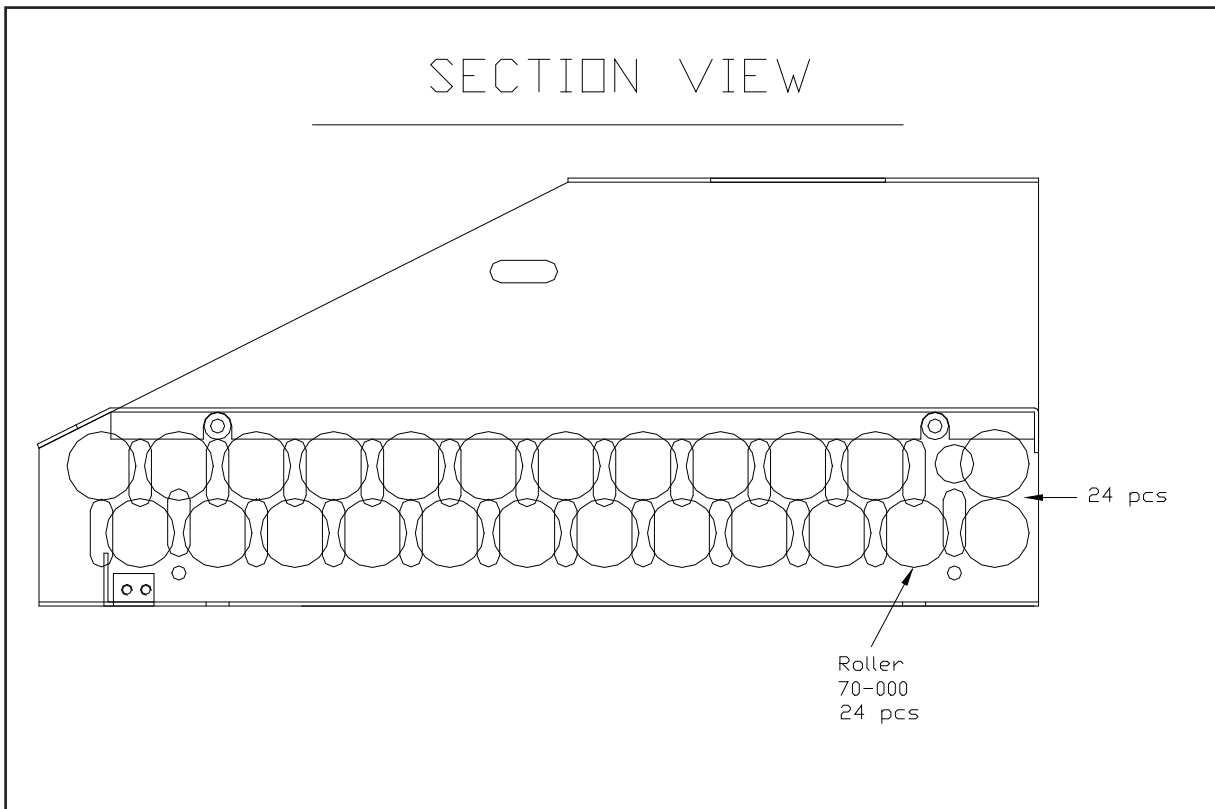


Rack Side Right Dry R38, Drawing 316108

RIGHT SIDE VIEW

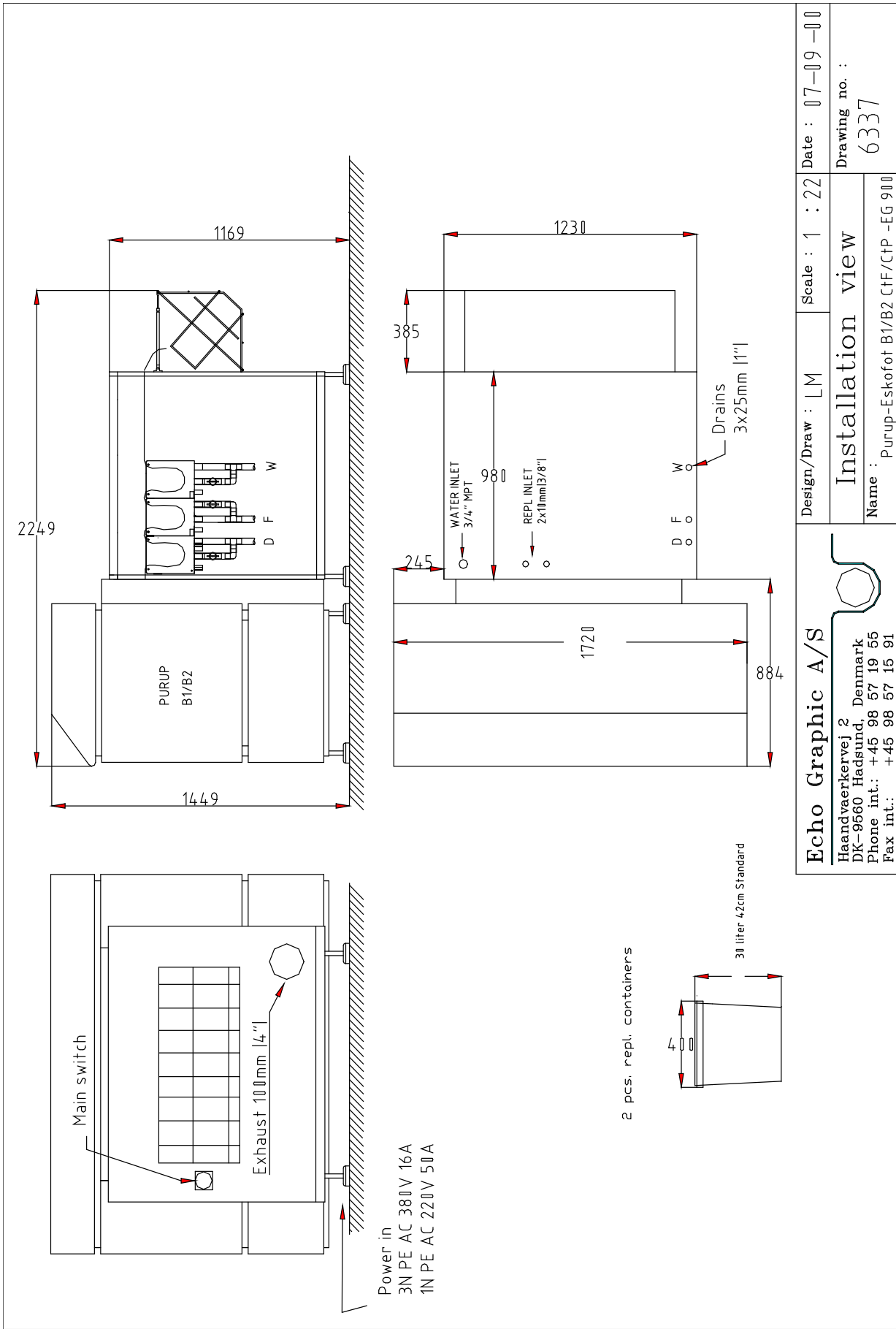


SECTION VIEW



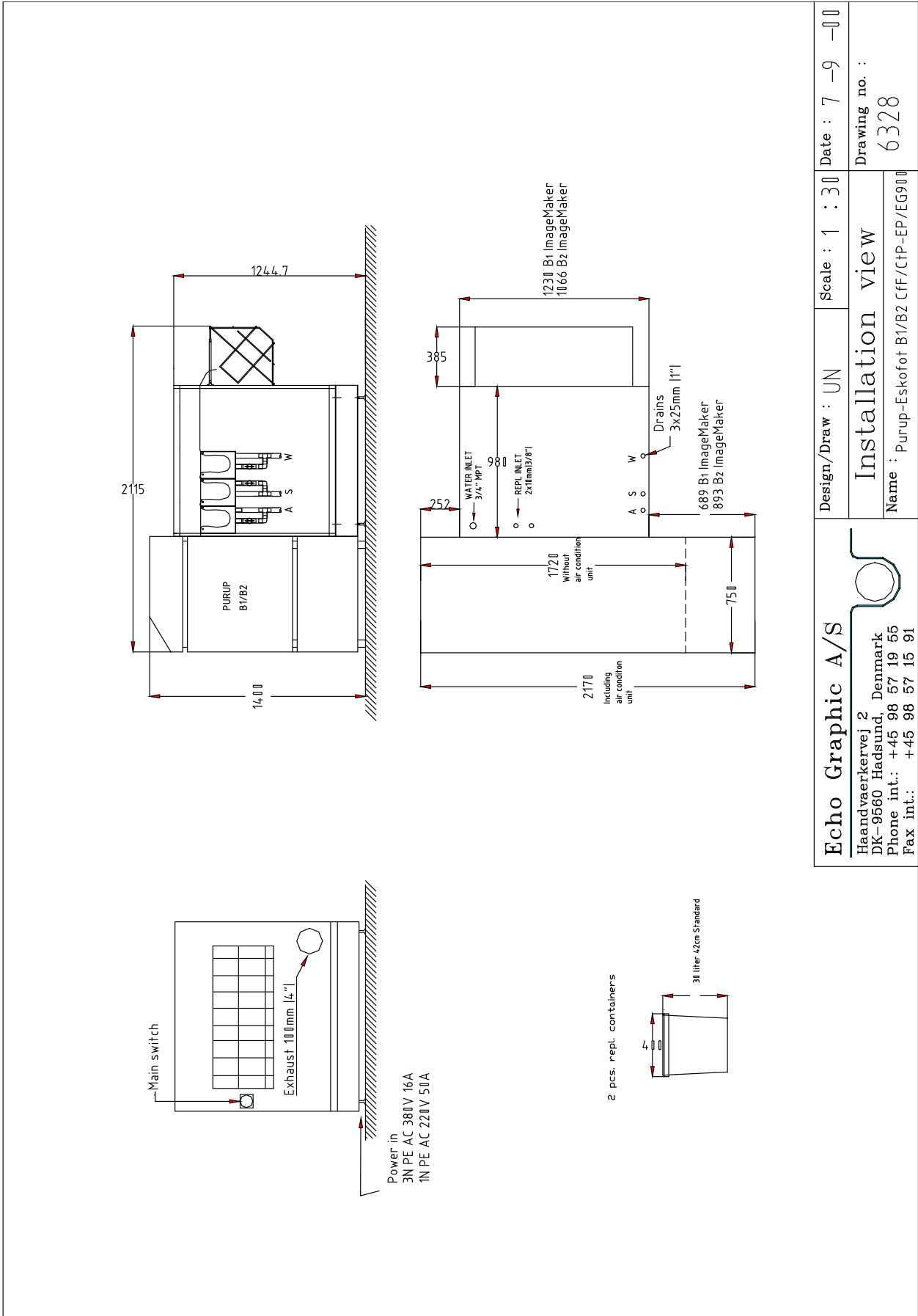
SECTION EIGHT: On-Line Description Purup-Eskofot Models

SECTION 8



Installation view 6337

SECTION EIGHT: On-Line Description Purup-Eskofot Models



Echo Graphic A/S Haandvaerkervej 2 Denmark DK-9560 Hadsund, Phone int.: +45 98 57 19 55 Fax int.: +45 98 57 15 91	Design/Draw : UN	Scale : 1 : 30	Date : 7 -9 -00
	Installation view Name : Purup-Eskofot B1/B2 C/F/CTP-EP/EG90		
			Drawing no. : 6328

SECTION 8

Hope/Carnfeldt On-Line Processors for Purup-Eskofot ImageMakers:

	EG 900	EP 900	EG 901	EGP 901
Dimensions of on-line system				
Length	222 cm / 87.4"	222 cm / 87.4"	222 cm / 87.4"	281 cm / 110.7"
Width	217 cm / 85.4"	217 cm / 85.4"	217 cm / 85.4"	217 cm / 85.4"
Height	140 cm / 55.1"	140 cm / 55.1"	140 cm / 55.1"	140 cm / 55.1"
Shipping dimensions				
Length	133 cm / 52.4"	133 cm / 52.4"	133 cm / 52.4"	175 cm / 68.9"
Width	142 cm / 55.9"	142 cm / 55.9"	142 cm / 55.9"	142 cm / 55.9"
Height	143 cm / 56.3"	143 cm / 56.3"	143 cm / 56.3"	129 cm / 56.3"
Weight				
Net	350 kg/772 lb.	350 kg/772 lb.	350 kg/772 lb.	520 cm/1146 lb
Gross	435 kg/960 lb.	435 kg/960 lb.	435 kg/960 lb.	625 cm/1378 lb
Specifications				
Inlet width	91 cm / 36"	91 cm / 36"	91 cm / 36"	91 cm / 36"
Tank capacity	29 l / 7.7 US gal.	16 l / 4.3 US gal.	29 l / 7.7 US gal.	29 l/7.7 US gal.
Rack length dev.	32 cm / 12.6"	20 cm / 7.9"	44 cm / 17.3"	44 cm / 17.3"
Developing time min.-max.	20-80 sec.	15-90 sec	15-90 sec.	15-120 sec.
Speed at 30 sec. dev. time	64 cm/min. 25.2"/min		88 cm/min. 34.6"/min.	88 cm/min. 34.6"/min.
Speed at 20 sec. dev. time		60 cm/min. 23.6"/min.		60 cm/min. 23.6"/min.
Max. film length off-line	10 m / 32.8 ft	2 m / 6.6 ft.	10 m / 32.8 ft	10 m / 32.8 ft.
Min. film size off-line	30x42 cm 11.8 x 16.5"	30x42 cm 11.8 x 16.5"	18 x 10 cm 7 x 4"	A4
Max. format (set by ImageMaker)	76x86 cm 29.9 x 33.9"	76x86 cm 29.9 x 33.9"	86 x 121 cm 34 x 47.6"	21 x 29 cm 8.3" x 11.4"
Dev./fix./wash temperature range	20-45°C 68 - 113°F	20-45°C 68 - 113°F	20-45°C 68 - 113°F	20-45°C 68 - 113°F
Exhaust blower	Built in	Built in	Built in	Built in
Exhaust connection	Ø 10 cm	Ø 10 cm	Ø 10 cm	Ø 10 cm
Circulation rate dev., fix.	10 l/min. 2.7 US gal.	10 l/min. 2.7 US gal.	22 l/min. 5.8 US gal.	22 l/min. 5.8 US gal.
Water consumption (operate)	3.5 l/min. 0.9 US gal	3.5 l/min. 0.9 US gal	3.5 l/min. 0.9 US gal	3.5 l/min. 0.9 US gal
Emission of heat to room (operate)	3000W 879 BTU/hr.	3000W 879 BTU/hr.	3000 W 879 BTU/hr.	3000 W 879 BTU/hr.
Water connection	¾" MPT	¾" MPT	¾" MPT	¾" MPT
Drain connection	3x1" hose nipple	3x1" hose nipple	3 x 1" hose nipple	6x1"
Replenishment containers	Dev/fix 30l.	Dev/fix 30l	4 x 30 l	4 x 30 l
Max. power consumption	5900VA	5900VA	7900 VA	9400 W
Average power consumption:				
Operate	5000W	5000W	5700 W	6200W
Power save	1000W	1000W	3500 W	3500 W
Night mode	600 W	600 W	1100 W	1100 W
Power supply:				
1x230ACV+/-10% / 50/60Hz	30 amp	30 amp	40 amp	40 amp
3x230ACV+/-10% / 50/60Hz	3 x 16 amp	3x16 amp	3 x 16 amp	3x16 amp

SECTION 8

Technical Specifications