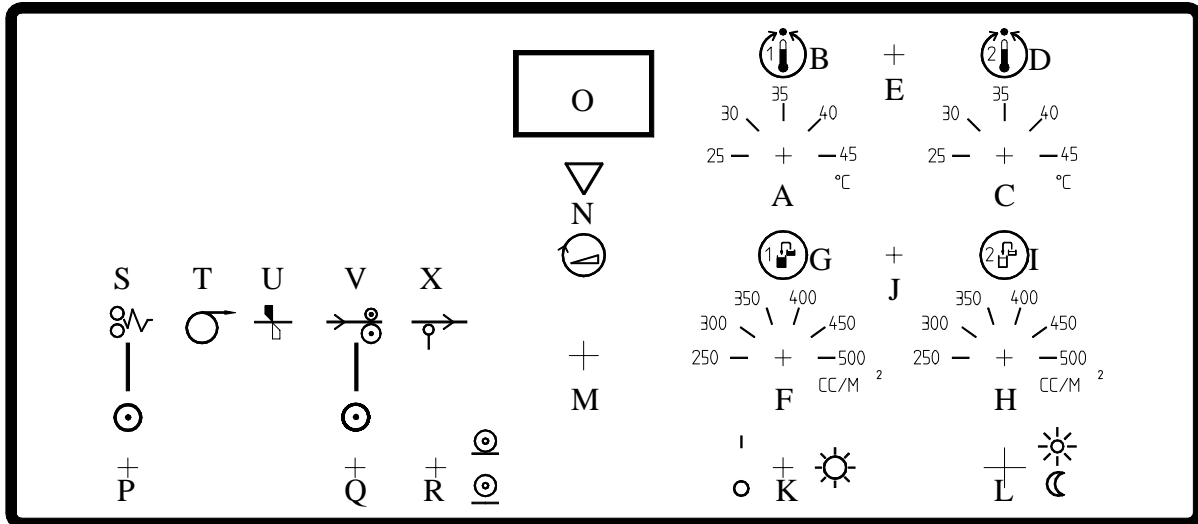


SECTION EIGHT: On-Line Description Herkules

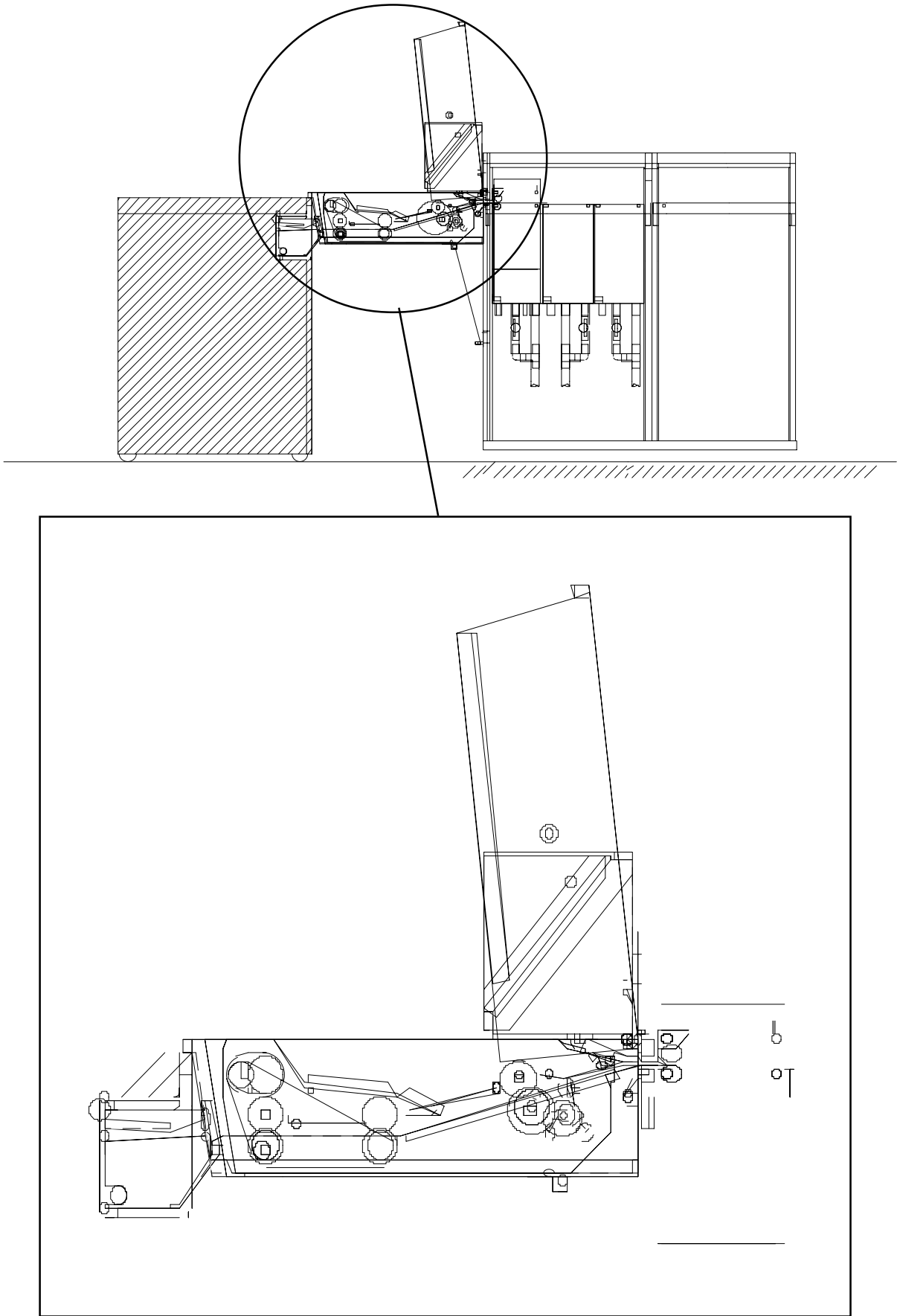
Important

Your On-Line Processor has a built in exhaust blower. Even if the main switch is switched off, the blower will still be on. This is to prevent chemical fumes in the conveyor/imagesetter. If a timer is connected in series with the main power cable, the machine has to be modified, so that the exhaust blower is always running.



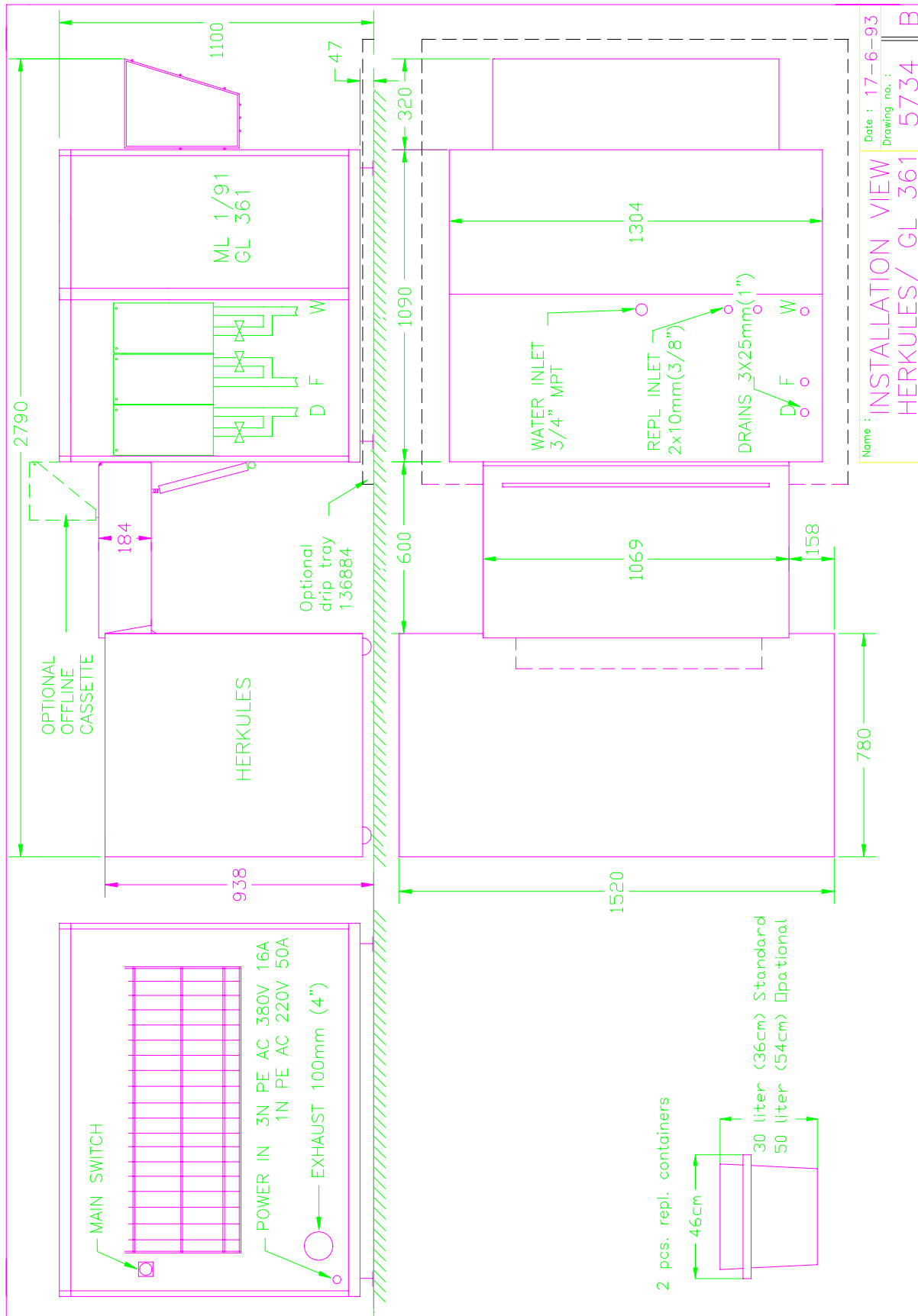
A	Temperature Adjustment Developer	M	Developing Seconds Adjustment
B	Heat ON Indicating Developer	N	NO FEED Signal (Indicates when inserted film is free of inlet) Only used in OFF-LINE position !
C	Temperature Adjustment Fixer	O	Display, shows development seconds and temperature
D	Heat ON Indicator Fixer	P	Error Signal Reset Switch
E	Temperature Readout DEV/FIX	Q	Switch for Set Load Signal
F	Volume On Developer Replenishment (Max. programme approx. 40cc).	R	Switch for Off-Line/On-Line
G	Developer replenish indication	S	Error Signal (Lamp and intern Buzzer) (Flashing and buzzing when the film counter is on 0. Only flashing, when the level in the tank is too low; and only buzzing when there is no exhaust).
H	Volume On Fixer Replenishment (Max. programme approx. 40cc).	T	Load Signal
I	Fixer replenish indication	U	Cut Signal
J	Manual replenish switch	V	Busy Signal
K	Display light ON/OFF	X	Ready Signal
L	Switch for Stand-By/Operate Select. When Stand-By is selected, Error (L) lights continuously.		

SECTION EIGHT: On-Line Description Herkules



Conveyor

SECTION EIGHT: On-Line Description Herkules



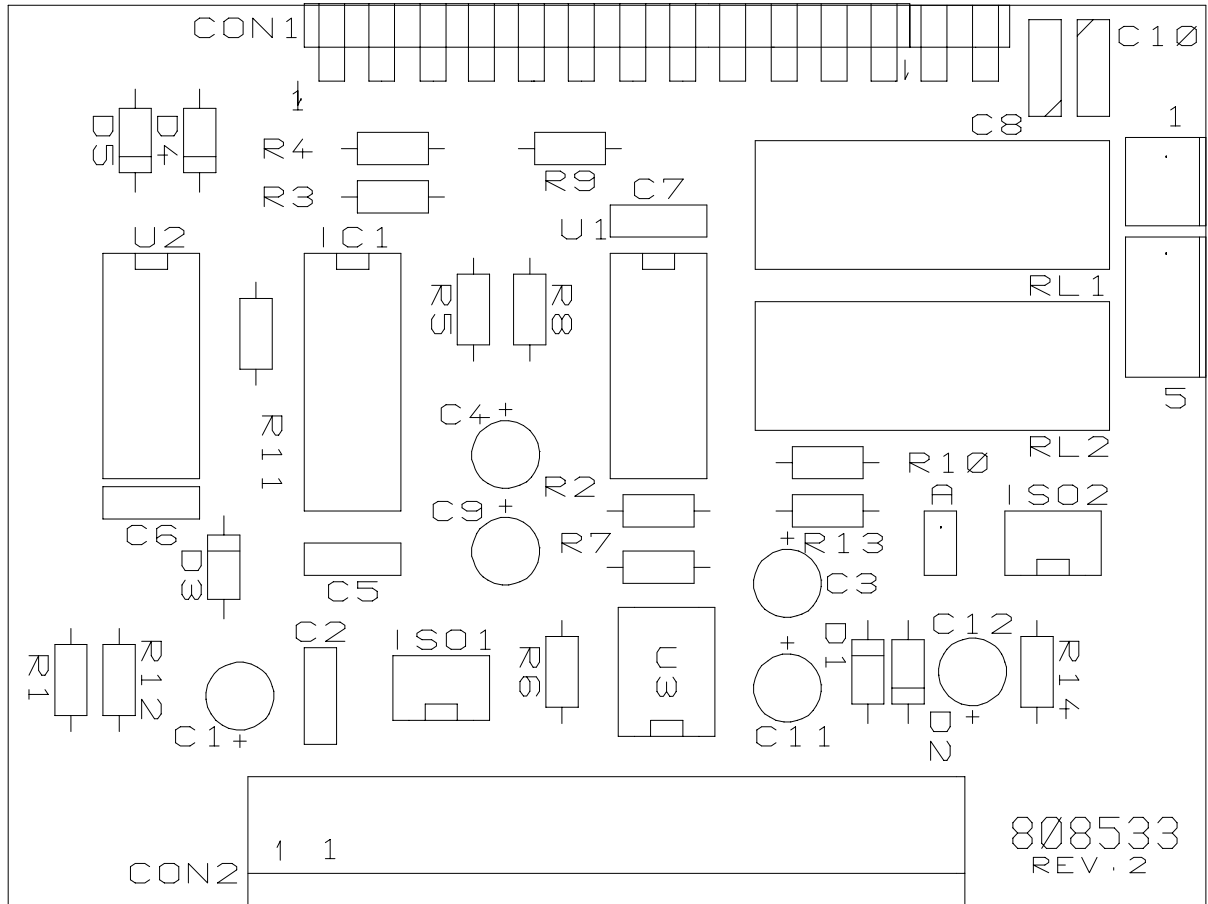
Name : **INSTALLATION VIEW**
HERKULES/ GL 361
 Date : 17-6-93
 Drawing no. : 5734 B

Installationview
 5734

SECTION EIGHT: On-Line Description Herkules

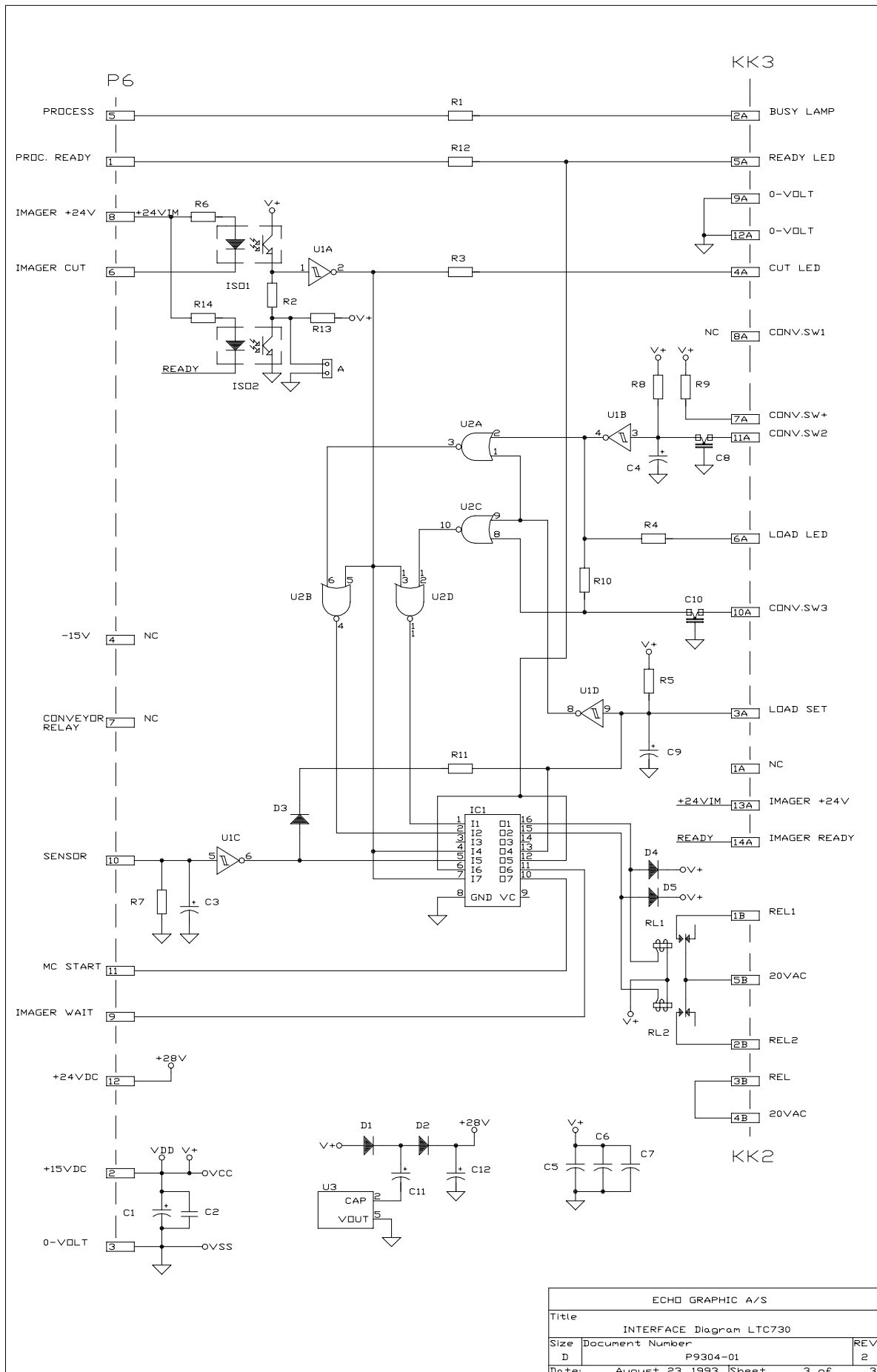
The Motherboard Diagram is placed in the back of this manual P9111-01

SECTION EIGHT: On-Line Description Herkules



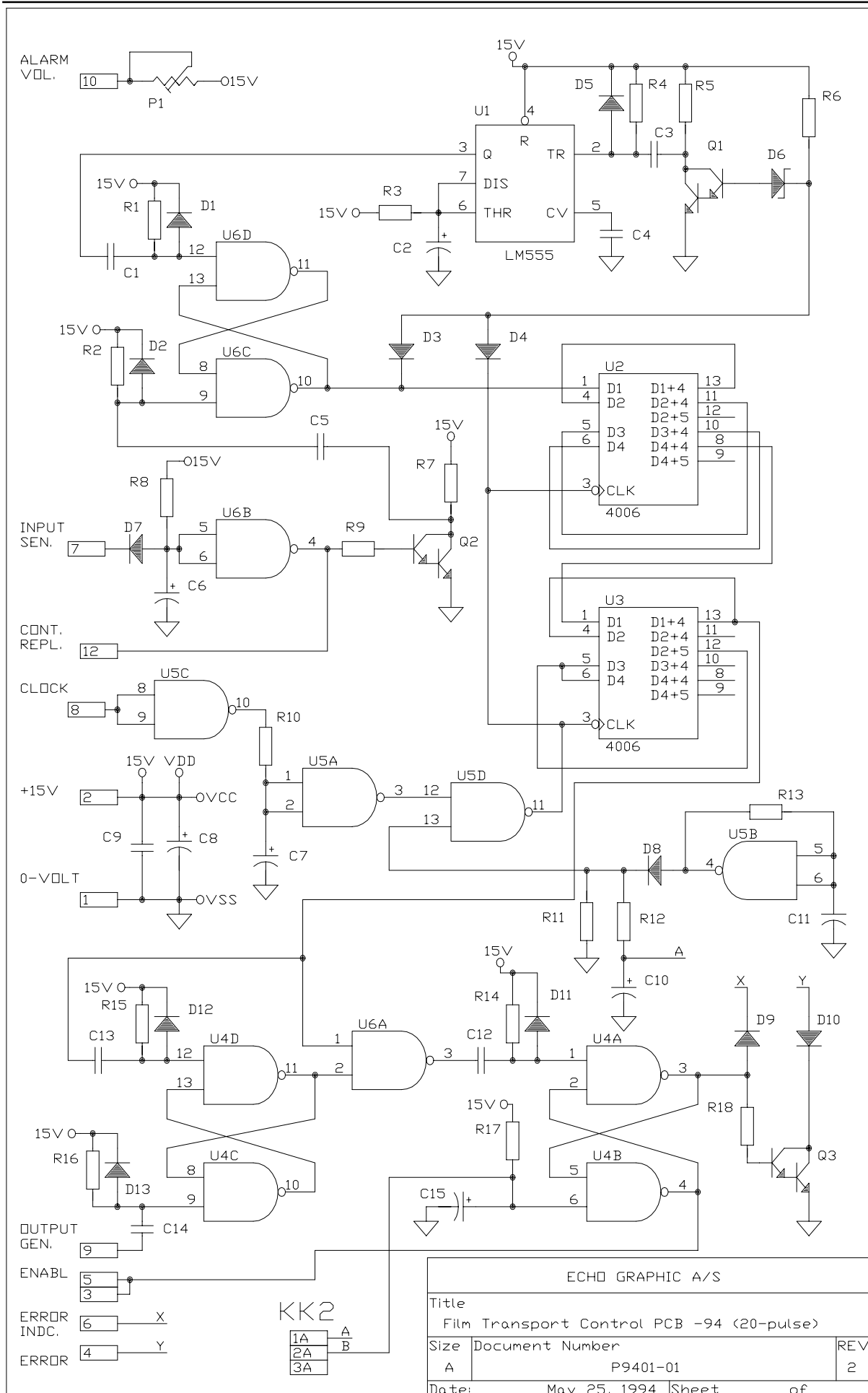
Interface PCB Location

SECTION EIGHT: On-Line Description Herkules



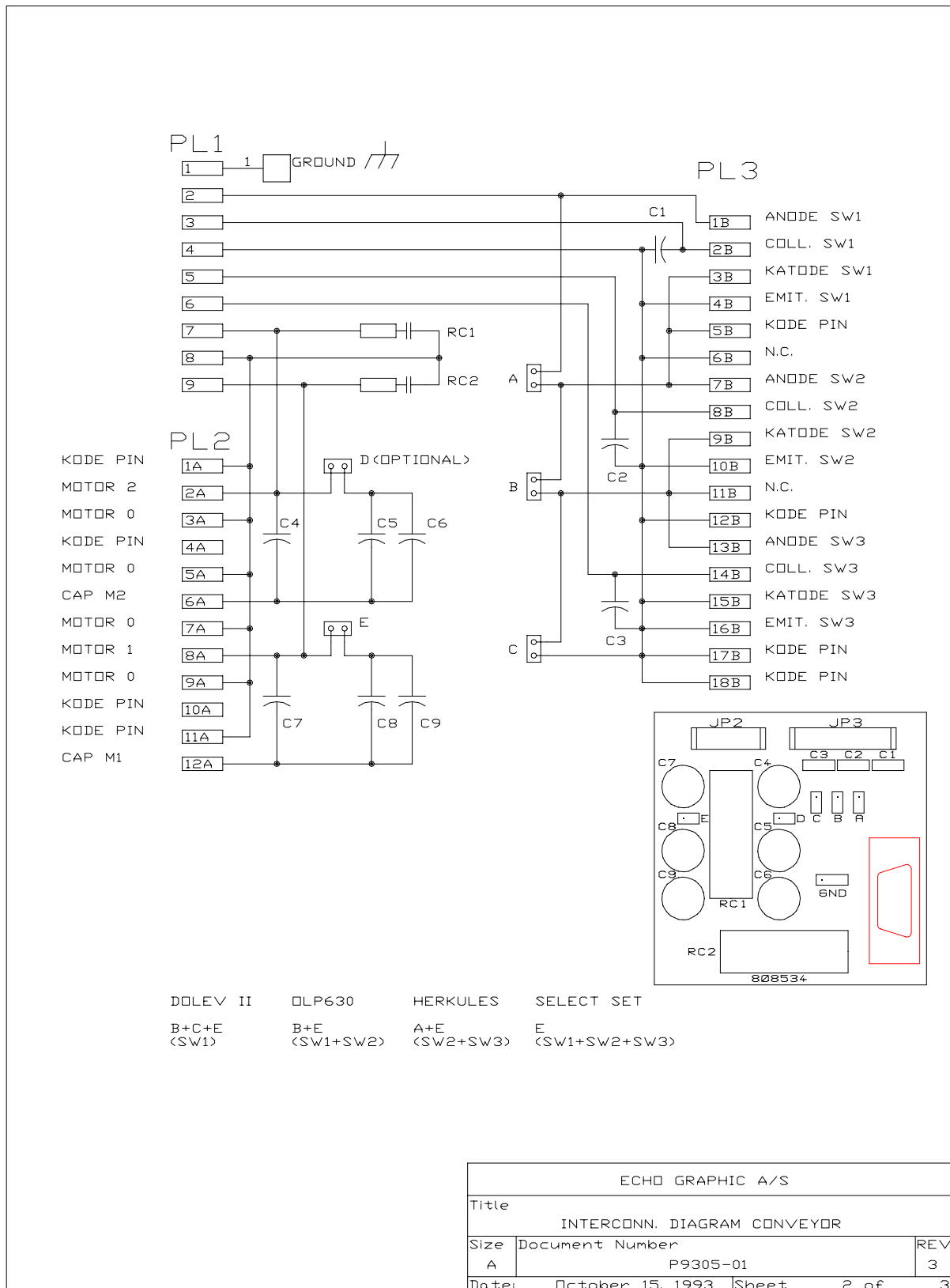
Interface PCB Diagram

SECTION EIGHT: On-Line Description Herkules



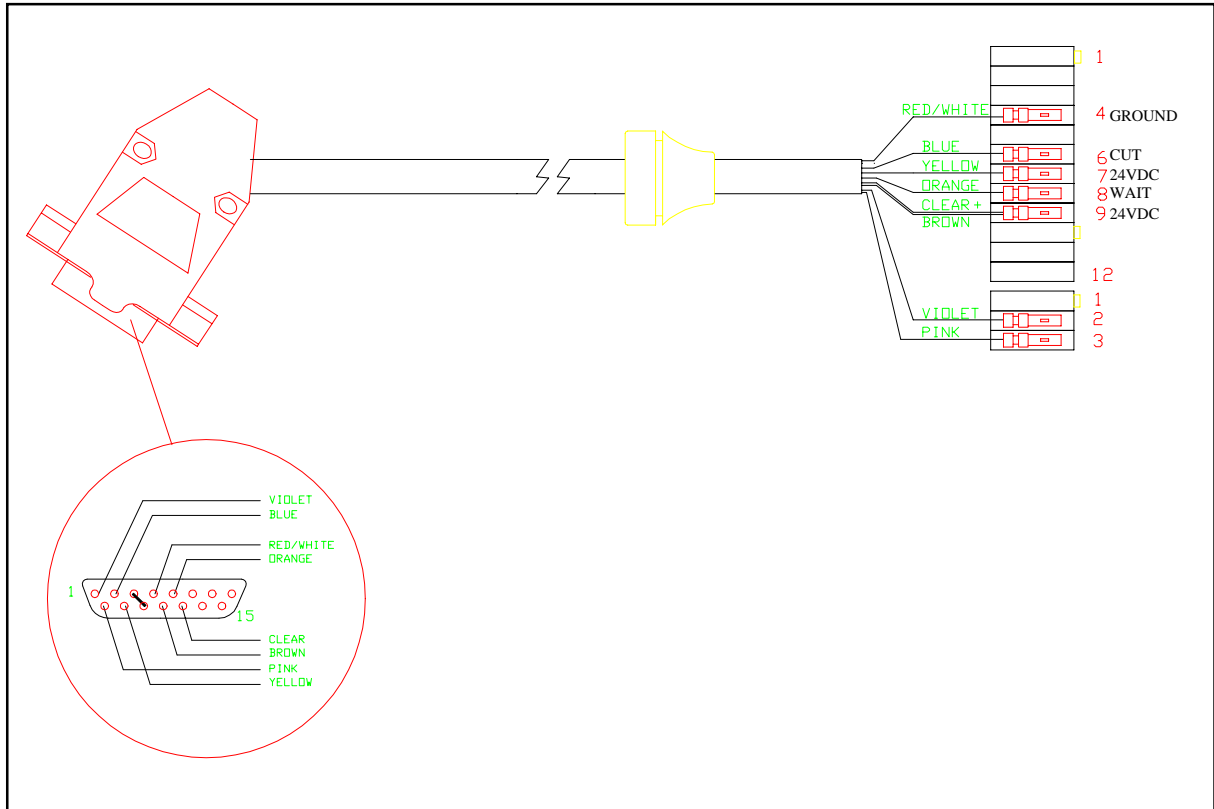
ECHO GRAPHIC A/S		
Title		
Film Transport Control PCB -94 (20-pulse)		
Size	Document Number	REV
A	P9401-01	2
Date:	May 25, 1994	Sheet of

SECTION EIGHT: On-Line Description Herkules

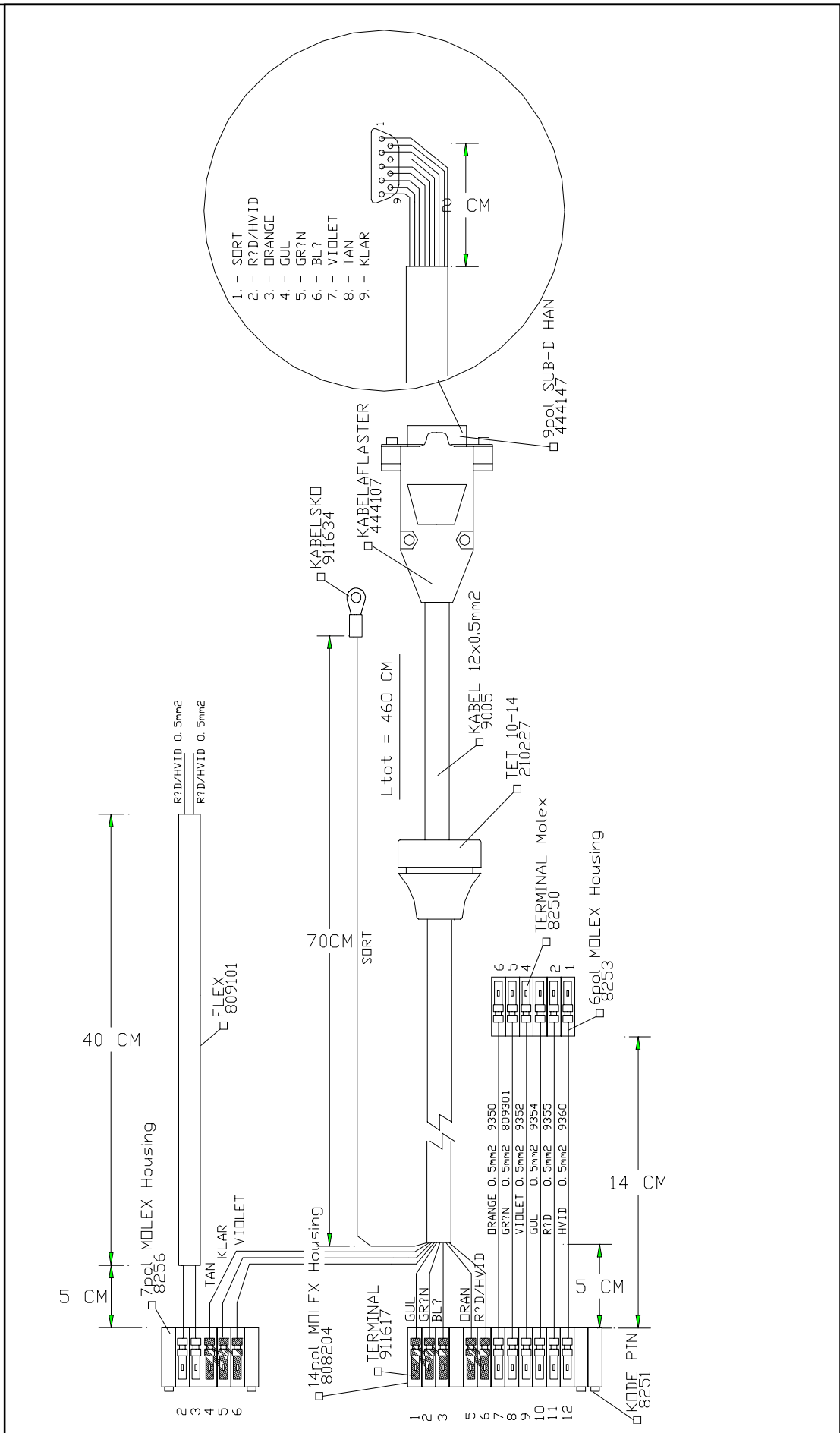


Conveyor Interconnection Diagram and Location

SECTION EIGHT: On-Line Description Herkules

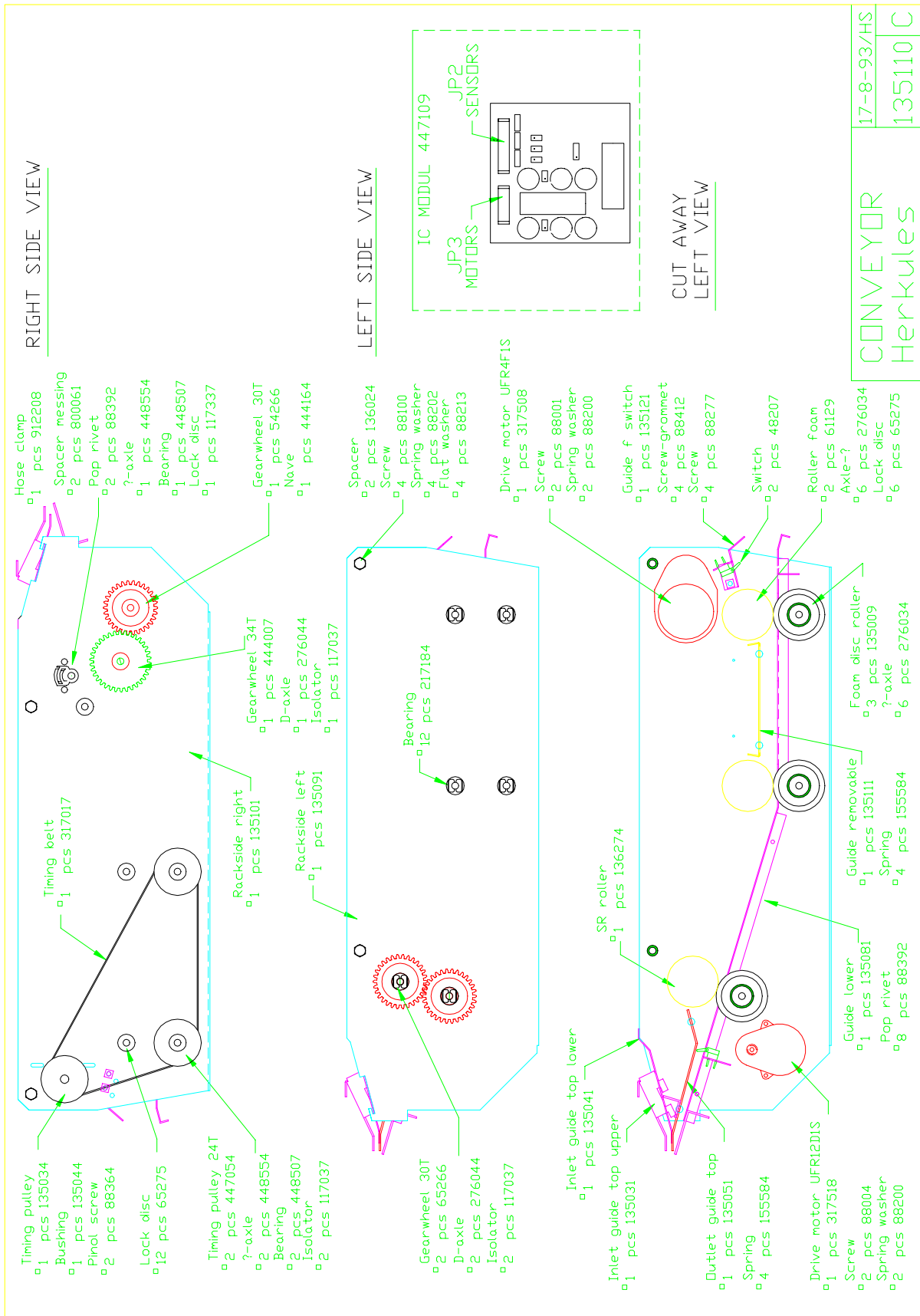


SECTION EIGHT: On-Line Description Herkules



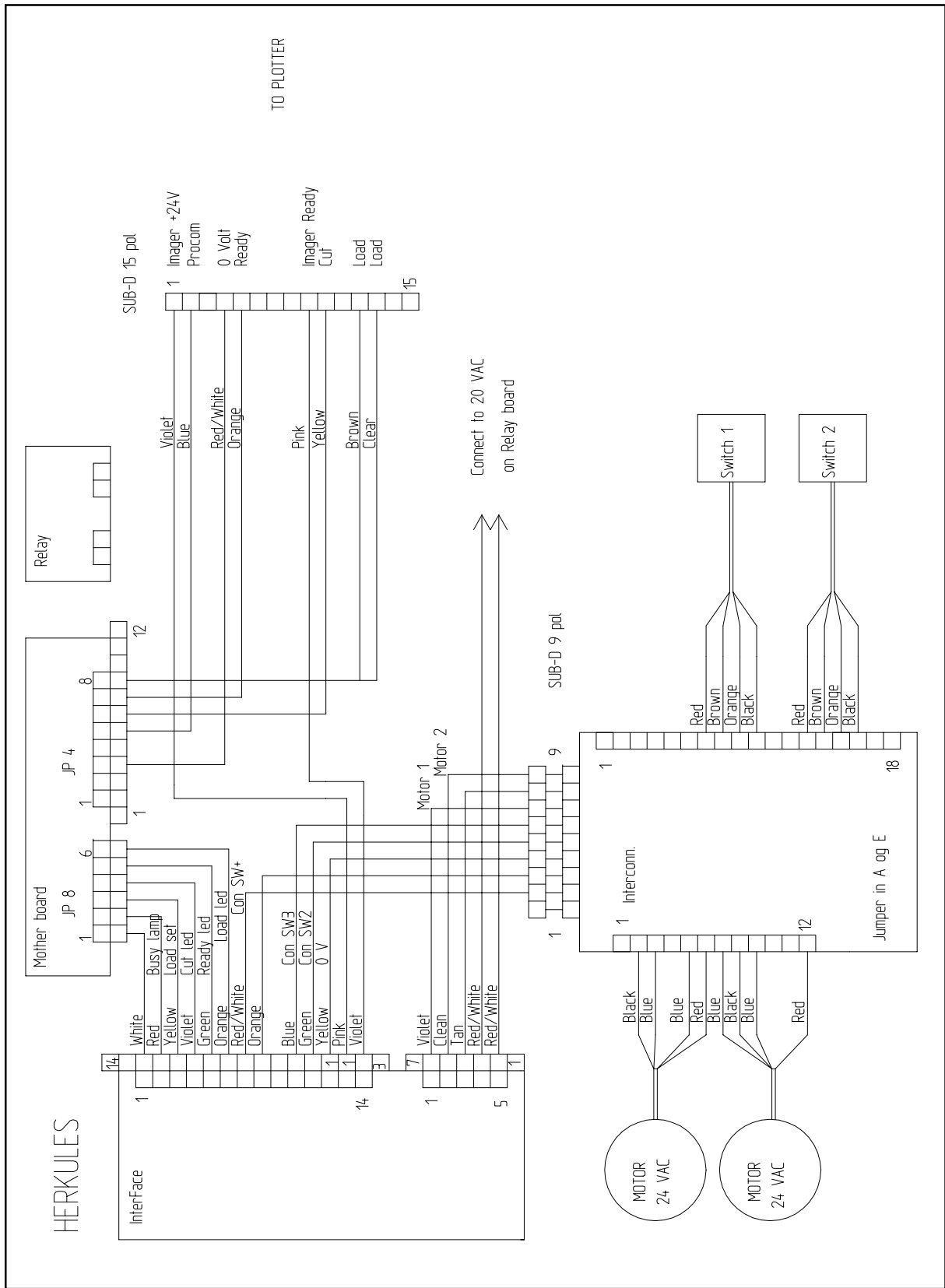
Cableset Processor - Conveyor, Drawing 890447

SECTION EIGHT: On-Line Description Herkules



Conveyor Herkules

SECTION EIGHT: On-Line Description Herkules



Connections between processor - conveyor - imager/printer