

# SERVICE BULLETIN

Date: 29. April 1999

## 1. New support for replenish pumps

## 2. Rubber lips

1. In April 1998 a modification of the support for the replenish pumps was introduced. The new support is mounted with springs instead of with rubber blocks.

The advantages of the new support are less noise and vibrations as well as a better efficiency of the pumps. Processors manufactured before April 1998 can profitably be upgraded with this new system. The support has part number 117335 and the springs have part number 912603. Eight springs are needed. Please look at fig. 1.

After replacing the support the pump must be calibrated according to chapter five in the service manual.

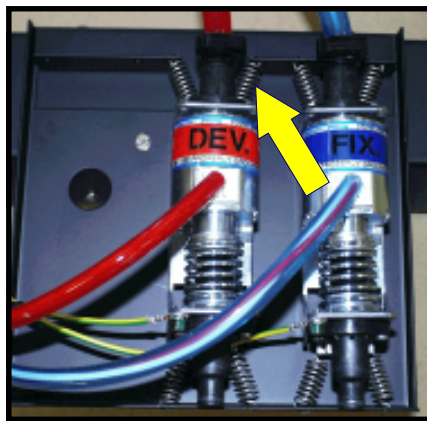


Fig. 1. The new support for replenish pumps.

As from 5 January 1999 we have placed two rubber lips in the outlet between the water rack and the dryer rack. The rubber lips are introduced to minimize the stream of hot air from the dryer section into the wet section. This modification has resulted in less chemical fumes. Processors manufactured before January 1999 can profitably be upgraded. The rubber lips have part number 7105. Please look at fig. 2 and 3.

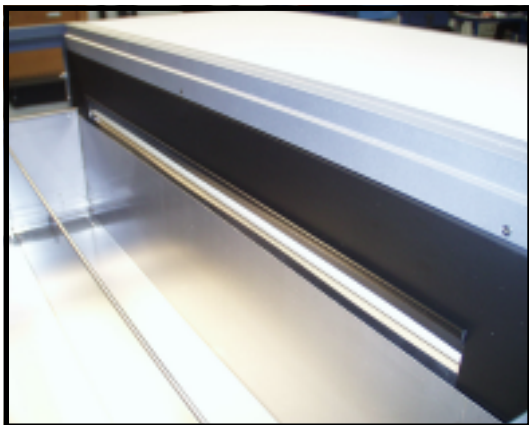


Fig. 1. Rubber lips.

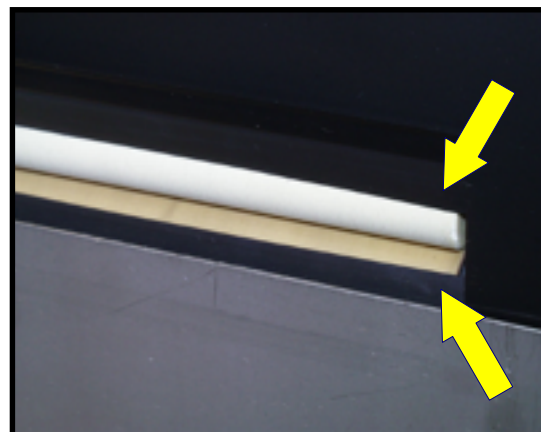


Fig. 2. Rubber lips.

We stress that the above facts are valid for all GL 17", 29", 36", 54" and 65" processors.