

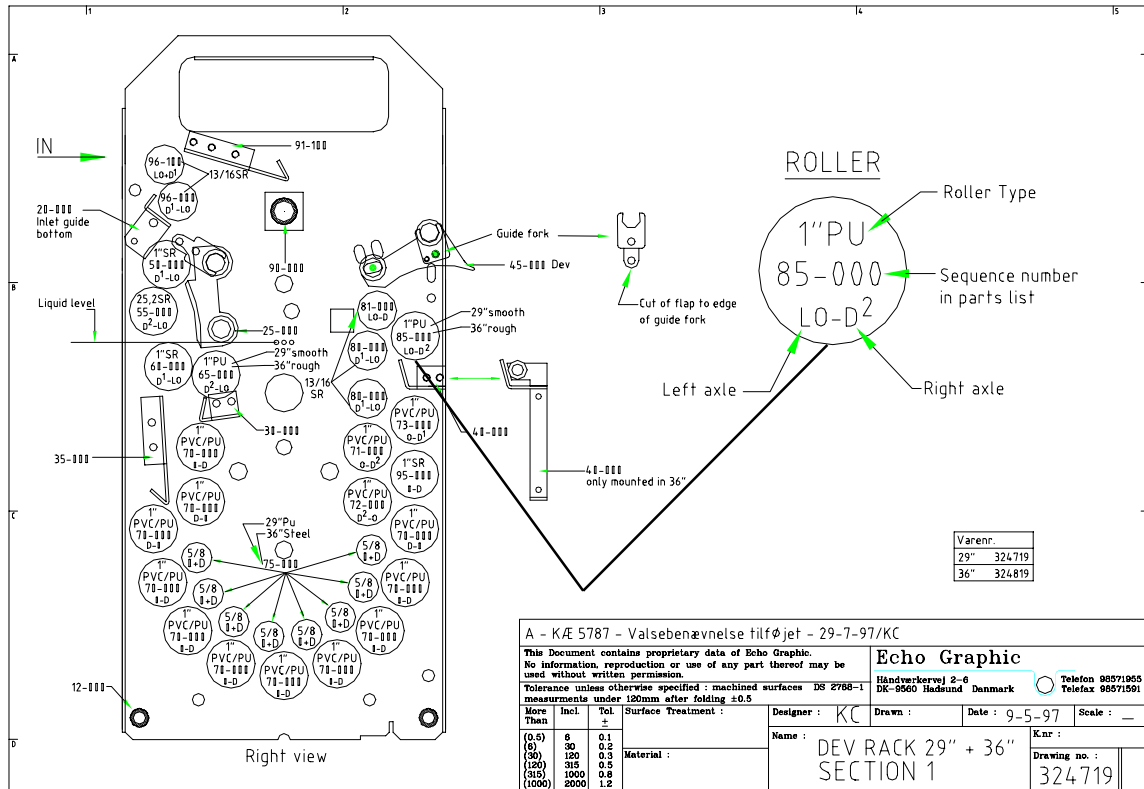
# SERVICE BULLETIN

Date: 23 September 1999

No. 17

## Use of sequence numbers on drawings

In the future sequence numbers will gradually be introduced on the drawings in the manuals for all types of processors. These numbers should be used as a help to find the exact part, for which one requires a part number. In the following the new system is explained.



Locate the part, for which you require a part number, on the drawing. In this example the roller has sequence number 85-000. Then find sequence number 85-000 in the part list for part number 324719.

			Page: 7		Date: 30/08/1999		Main group	
1	Dev1 rack 29" R44 Combi	324719						
.1	1	ST Roller PVC 1"x29"			129223	2	73-000	
..2	1	ST Roller PVC 1"x29" w.o holes			129213	4		
.1	8	ST Polyurethan roller 5/8"x29"			129534	4	75-000	
.1	8	ST Axle D			276044	4	75-001	
.1	16	ST Pulleys 1/4IN >			65274	4	75-002	
.1	8	ST Axle->			276034	4	75-003	
.1	2	ST Roller 13/16"x29" Soft Rubber			129064	4	80-000	
.1	2	ST Axle-D, Long F.1 Gear Wheel			276074	4	80-001	
.1	2	ST Axle- >1/4" x 47.8 Long			235184	4	80-002	
.1	1	ST Roller 13/16"x29" Soft Rubber			129064	4	81-000	
.1	1	ST Axle- >1/4" x 47.8 Long			235184	4	81-001	
.1	1	ST Axle D			276044	4	81-002	
.1	1	<b>ST Roller PU. 1"x 29" Smooth</b>			<b>129013</b>	<b>4</b>	<b>85-000</b>	
.1	1	ST Axle- >1/4" x 47.8 Long			235184	4	85-001	
.1	1	ST Axle-D, Long F.2 Gear Wheel			276084	4	85-002	
.1	1	ST Driving Axle 29" >14 80/24T PP			129605	0	90-000	

The sequence numbers will be in numerical order in the part list. Please notice that the sequence numbers are grouped in a way that there is a logical connection between parts belonging together. Example: 85-000, 85-001 and 85-002.

The main groups will end in 000, 100, 200 etc.