

SERVICE BULLETIN

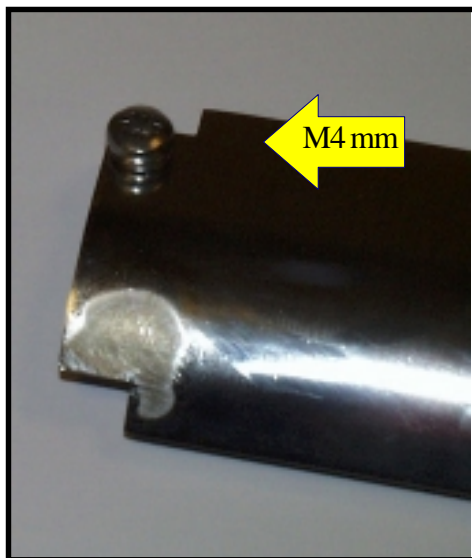
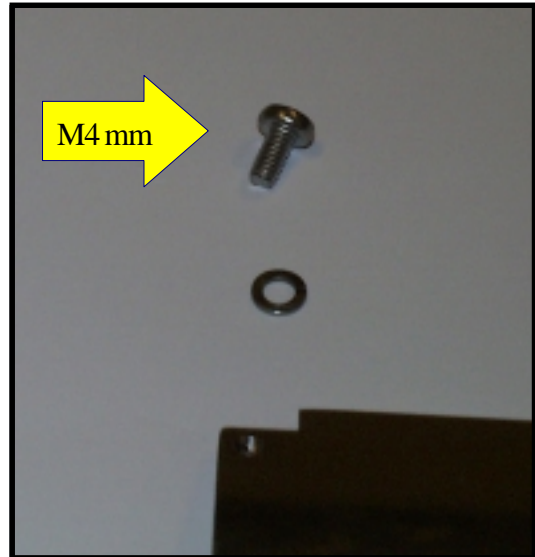
Date: 3 January 2001

No: 24

Screw on Inlet Guide in Hope/Carnfeldt GL 291 On-Line Processors for Dolev 4press

In some cases we have experienced that the inlet guide in the conveyor has been pushed towards the processor. This can imply that the film will be transported slanting into the processor.

In order to remedy this you should mount a M4 screw on the inlet guide, as shown on the pictures. When mounting the screw it is necessary to make M4 thread in the guide or alternatively, you can place a bolt under the guide.



The screw implies that if the guide, in extreme cases, is pushed up it will always fall back into the correct position.

From August 2000 all Hope/Carnfeldt processors for Dolev 4press are delivered with this screw.