

## Installing Updating software for the Celis Control

To install the Celis software update program please follow these instructions:

1. Copy the file D:\Software\celis.zip to the directory where the Celis program shall be installed.

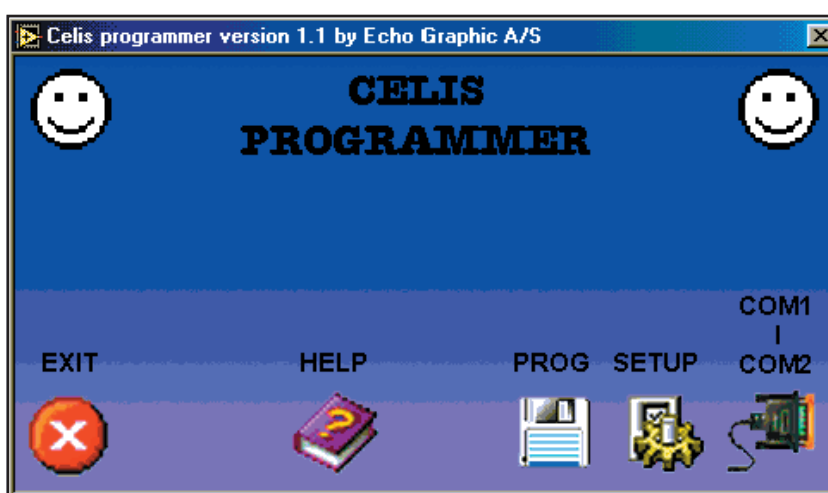
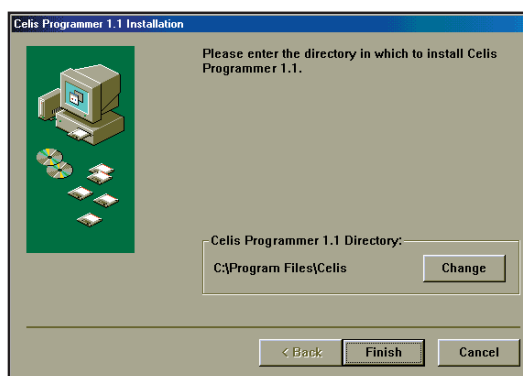
**Ex. C:\echo\celis.zip**

2. Extract the file “Celis.zip” to the same directory.
3. Run the installation file from the location.

**Ex. C:\echo\disks\setup.exe.**

4. Select installation directory.
5. Press “Finish” to install the programme.

6. Reboot the computer.
7. The installation program creates a short-cut in the start menu. Press the Celis icon to start the program and follow the instructions in the program
8. Select COM port.  
(default com1)
9. Connect the 0-modem serial cable to the Celis Control.
10. Start the update of software and settings.



To make it easier to use the program you can copy the Celis software folder ex. v1\_27 , v2\_14 or 4.01 to the same directory where you installed the programme. The latest version can always be found at our homepage: [www.echographic.dk/service](http://www.echographic.dk/service)

## Updating the Software in the Celis Control

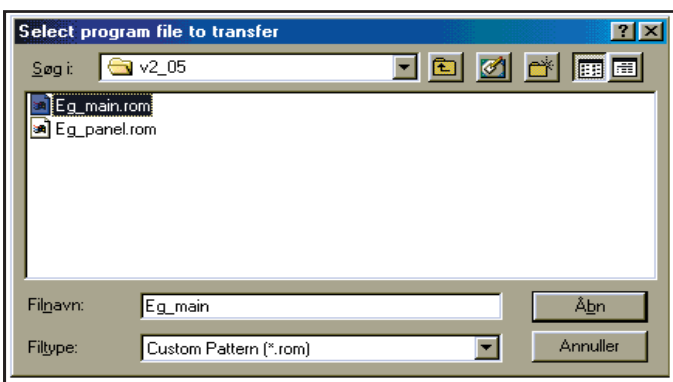
The software in the Celis Control is stored in a flash memory on the main CPU board and on the display board. **Note: The software for the two boards is not the same!**

Tools needed to perform the update:

- Celis programming software
- Rom-file for main CPU board
- Rom-file for display board
- Txt file for the settings
- PC or Laptop with a communication port COM 1-4
- Windows 95/98 2000 NT operating system
- Standard .0 modem cable. Can be ordered at Echo Graphic part no. 365088.

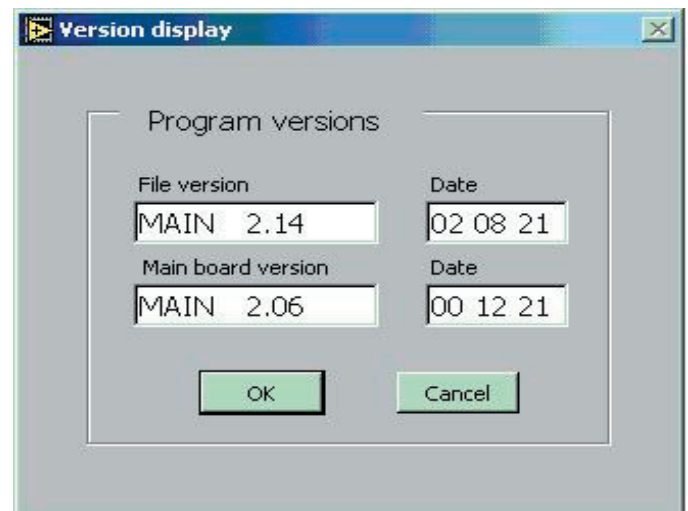
### Upgrading instructions:

1. Turn off the computer and the Celis control
2. Connect the PC COM1 to the connector P1 on the main CPU board with the cable.
3. Start the Celis Program and The display should look like this:
4. Now turn off/on the Celis Control.
5. Press the “Prog” Icon and find the place where you have saved unpacked the zip file with the Rom and Txt file . Eg. the fig below.

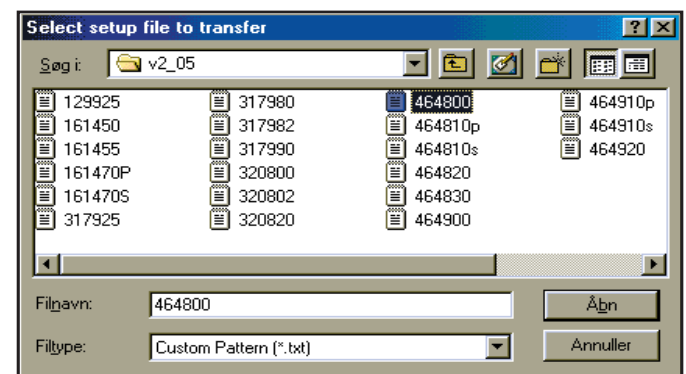


6. Select the Rom files to transfer start with the one named Eg\_panel.rom and press enter.

7. The PC will now compare the file version with the board version and ask if you wish to proceed with the update. Press Y for yes and N for no. The update will now begin. The transfer will take appx. 4 min for main and 10 min. for the panel. During the update the Celis display will show “Programming flash and count to appx. 1200. During update of main it will display “waiting for main”



8. Repeat step 6 and 7 for the file Eg\_main.rom if necessary
9. For upload of the setup file press the “setup” icon and find the place where you have saved unpacked the zip file with the Rom and Txt file . Eg. the fig below.



The setup file should be updated in the following cases:

- If main changes are made (eg. software update to a higher version on both Main and Panel) the setup.txt
- If only panel or Main is updated the processor settings will be one the staying part. ( please refer to exchange instructions)

If you update the setup file the processor should be calibrated. See page 57 to 59 in the manual for calibration of pumps, dev. time and in some instances sensors.

10. Select the \*.txt file that match the type number of the processor. (this number can be found on the on the typesign near the main switch. If you suspect that the mainboard/ have been reset eg. battery failure, over voltage or a failed setup the file Init.txt should be uploaded before the \*.txt file!



**If a Panel is upgraded from Mk3 ex. sw version 2.11 to software version 4.01 The init file must be loaded ad the customer parem-eteren must be saved manual.**

By a normal exchange/update the init.txt file are not used!

11. Press “OK” to start transfer the Celis setup. The Celis setup will now display “Download setup”
12. Exit the the Celis Program and the Celis Control will start up remeber to calibrate pumps, dev. etc. after the update.

Please refer to release notes on each software version regarding special parameters.



If you update the setup file the processor should be calibrated. See page 57 to 59 in the manual for calibration of pumps, dev. time and in some instances sensors.

**Please note that exit sensors have to be activated manually after the txt file has been loaded!!**

**Ensure that the Main and Panel version has the same number!**

### Error Masages

#### **Celis Commuication error!**

If this error is displayed look for the following options

- Ensure that the correct com port is used default is com1
- Ensure that the Processor has been switch on after the 0, modem cabel has benn connected and the Celis programmer has been started!
- Ensure that the PC does not shutdown the power to the comport during the ipdate process.
- If the error occur during upload of the \*.txt file try to load the file init.txt first



[www.echographic.dk/service](http://www.echographic.dk/service)

## Replacement of Main CPU, Panel or Panel Board

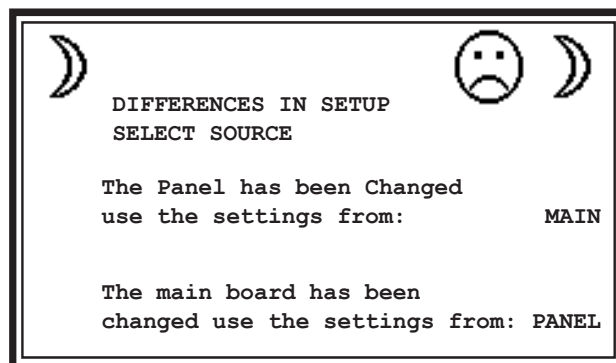
When you order a new board please state the serial number of the processor. Then Echo Graphic can deliver a board with the same software version as the one originally installed at the processor.

**NB: If the software has been updated upon installation please state the version of the actual software.**

**IF YOU HAVE RECIVED A MAIN PCB OR PANEL WITH A DIFFERENT SOFTWARE VERSION THAN INSTALLED AND DON'T HAVE A PC TO PERFORM THE UPGRADE FROM. PLEASE REVERT TO CHIP EXCHANGE!**

Instructions for mounting the board:

1. Turn off the processor at main switch and eventually lock it with a strip.
2. Dismount all wires, which lead to the board in question, and then dismount the old board.
3. Mount the new board in the same way as the old board with belonging boards.
4. Turn on the processor. At first the display will show "initializing" and then the following screen will appear:



All settings and calibrations are saved in the panel board and the main CPU board. Thus you can transfer data from the existing board to the new board.

**If you are replacing the panel board you should select main as your source.**

**If your are replacing the main CPU board you should select panel as your source.**

Once you have selected main or panel as your source the data transaction will begin. Duration is 2-3 minutes. ***Do not turn off the processor while data is being transferred!***

Upon finalizing the data transaction you should check that the two boards have the same software version. If not, you have the following options:

1. Upgrade to the newest software version on both boards. **CPU and PANEL MUST ALWAYS HAVE THE SAME SOFTWARE VERISION!**
2. The new board receives the same software version as the existing board.

**1. Upgrade to the newest software version on both boards** (recommended by Echo Graphic)

The newest software version can be found at [www.echographic.dk/service](http://www.echographic.dk/service). Please follow the instructions in the manual on page 5-57 and 5-58 to download the software. Once the \*.rom and \*.txt files have been downloaded you have to calibrate motors and pumps - see page 5-55 and 5-56 in the manual.

**2. The new board receives the same software version as the existing board**

Please approach Echo Graphic's service department to receive software by e-mail. To download the software you should follow the instructions in the manual page 5-57 and 5-58. Please note that you should not download txt file just as it is not necessary to carry out further calibrations once the software has been downloaded.

### MK3 to MK4

Special instruction when upgrading from Mk 3 CPU PCB #305116 to MK 4 CPU PCB #305216

Ensure that a PC with the Celis program is available. Mk4 CPU PCB is delivered with Software version 4.XX

It is necessary to upgrade the panel to 4.XX software version. Please note that only the panel can only be upgraded from version 2.XX to ver 4.XX. Further please see the software revision list on [www.echographic.dk](http://www.echographic.dk)

### Important

When upgrading from version 2.xx to 4.xx the txt file init.txt must be loaded before the new "Partno".txt file is loaded to the system. If it is not loaded there will be a Celis communication error during the upload.

Type of Main board:	Mk1	MK2	MK3	MK4
	Sw 1.xx	Sw 1.xx	Sw 2.xx	sw 4.xx

Type of Display pcb:	MK1	MK2	MK3
	Sw 1.xx	Sw 1.xx	Sw 2.xx and 4.xx

The main PCB board has been updated with software version \_\_\_\_.

The panel/panel PCB board has been updated with software version \_\_\_\_.


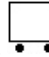

The panel/main PCB board is configured with serial no. 0000 0000

Date of configuration (DDMMYY) \_\_\_\_ - \_\_\_\_ - \_\_\_\_

Echo Graphic A/S  
Tel. no.: +45 9857 1955  
Fax no.: +45 9857 1591  
E-mail: [info@echographic.dk](mailto:info@echographic.dk)

When replacing a panel with software version 2.06 - 2.14 or 4.01 it is possible to move the flashprom with the rom file information from the damaged panel to the new panel . An upgrade or downgrade of the software file (panel.rom) with a PC is thereby not needed.

To perform the exchange please follow these steps:

1. Turn off the processor
2. Remove the backside of the »defective« panel
3. Remove the Flash Prom see Fig 1. (ensure that the tools that are used are not static loaded!)
4. Repeat step 2 and 3 for the new panel and mount the old flashprom in the new panel!
5. Close the panels and connect them to the processor.
6. Turn on the processor and select »Main« when the menu »differences in setup are displayed. Wait for the transfer of data.
7. Control the software version under the menu  ,  ,  The software version for main and panel must be the same!
8. Reboot and start using the processor

If panel is selected by the settings will be total corrupted and can only be restored by loading in init.txt and the setup.txt file information. This is done with a PC and the Celis Programmer. Please see »Updating software in the Celis Control on page 2«

Fig 1 Celis Display w. Cable Part no. #305370 - 305371 - 305372 - 305373

